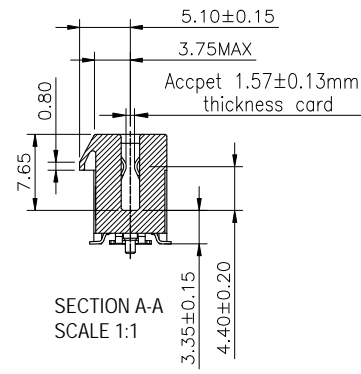
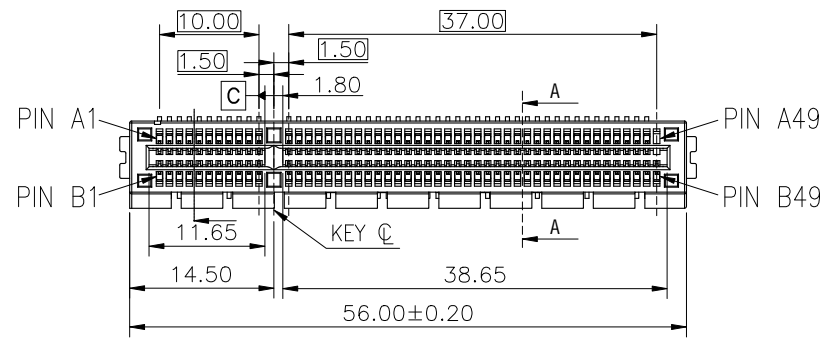
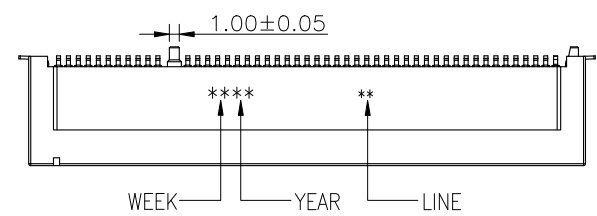
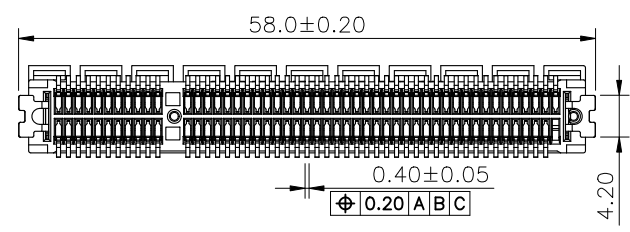
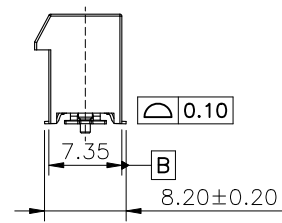
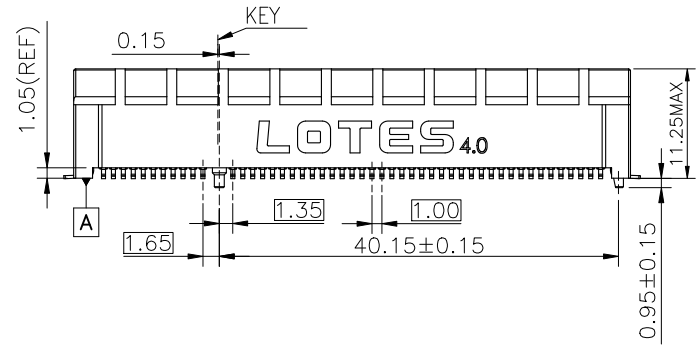


| REV. | ECN NO./DESCRIPTION | DATE |
|------|---------------------|----------|
| D | R170324 | 12/15"20 |
| E | R170324 | 02/26"21 |
| F | NDR210056 | 10/26"22 |



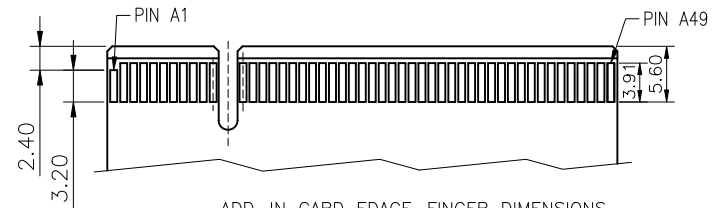
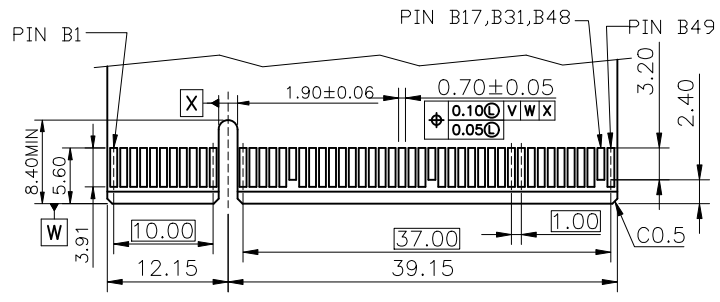
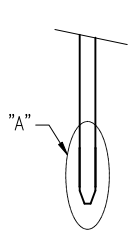
- NOTES:
- MATERIAL:
HOUSING:HIGH TEMPERATURE THERMOPLASTIC(SEE TABLE)
TERMINAL: PHOSPHOR BRONZE C5191;
HOOK: S50C
 - FINISH:
TERMINAL: 50u" NI PLATING OVER ALL;
100u" MATTE Sn PLATING ON SOLDER TAIL;
GOLD PLATING ON CONTACT AREA.
HOOK: Ni 50u" MIN. UNDERPLATED OVER ALL.
MATTE Sn 100u" MIN. PLATED ON SOLDER AREA.
 - MECHANICAL SPEC:
DURABILITY : 50 MATING CYCLES.
RETENTION FORCE : 0.40 kgf MIN PER PIN.
MATING FORCE : 1.15N MAX PER PAIR.
UNMATING FORCE : 0.15N MIN PER PAIR.
 - ELECTRICAL SPEC:
CURRENT RATING: 1.1A.
CONTACT RESISTANCE: 30 MILLIOHMS MAX. INITAL.
INSULATION RESISTANCE: 1000 MEGOHMS MIN.
DIELECTRIC WITHSTANDING VOLTAGE: 500V AC MIN.



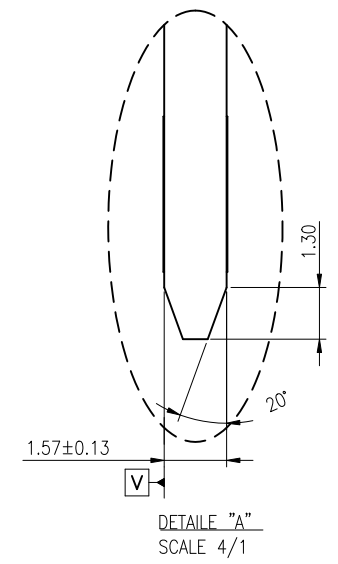
- IR REFLOW:
THE TEMPERATURE SHALL BE 260+/-5°C MAINTAINING 10+/-1 SECONDS
 - RoHS COMPLIANT OR HALOGEN FREE COMPLIANT.
 - RECOMMENDED STENCIL THICKNESS: 0.18mm.
 - STORAGE ENVIRONMENT FOR CONNECTOR:
THE MATERIALS SHOULD BE USED IN 72 HOURS AFTER OPENING THE PACKAGE IF NOT USED UP PLEASE RESEAL AGAIN.IF NOT RESEAL ON TIME,PLEASE BAKE 100C°/4H BEFORE USE.
 - PRODUCT NUMBER NOTE:
A PCI **** - P *** *
- A-TAPE REEL PACKING
 - C-TRAY PACKING
 - SERIAL NUMBER
 - K:RoHS COMPLIANT
 - P:HF COMPLIANT
 - PCI EXPRESS CODE
 - PCI EXPRESS FINISHED

| | | | | | | | | |
|-------------------------------------|-------------------|-------------------------------|-------------------------|--------------|----------|------------------------------|---|--|
| GENERAL TOLERANCES UNLESS SPECIFIED | | PART NO. SEE TABLE | LOTES | | | | | |
| .X ± 0.35 | X° ± 3° | | | | | APPROVED BY Mark 10/26"22 | TITLE 98P PCI EXPRESS 4.0 SMT CONNECTOR TYPE | |
| .XX ± 0.25 | X° ± 2° | | | | | | | |
| .XXX ± 0.15 | .XX° ± 1° | CHECKED BY Yao.Wu 10/26"22 | DWG NO. GAP-APCI0471 | | | | | |
| CUSTOMER DRAWING | | DRAWN BY XuZong 10/26"22 | SHEET 1 / 3 | SCALE 1:1 | REV F | | | |
| SIZE A4 | UNITS MM[INCH] | | | | | | | |

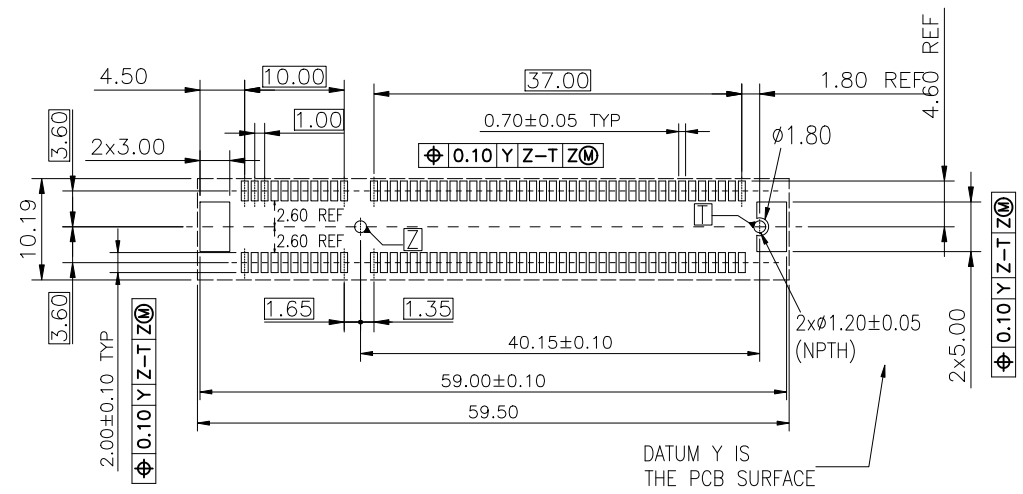
| REV. | ECN NO./DESCRIPTION | DATE |
|------|---------------------|----------|
| D | R170324 | 12/15"20 |
| E | R170324 | 02/26"21 |
| F | NDR210056 | 10/26"22 |



ADD-IN CARD EDGE-FINGER DIMENSIONS
DEFAULT TOLERANCE ±0.05



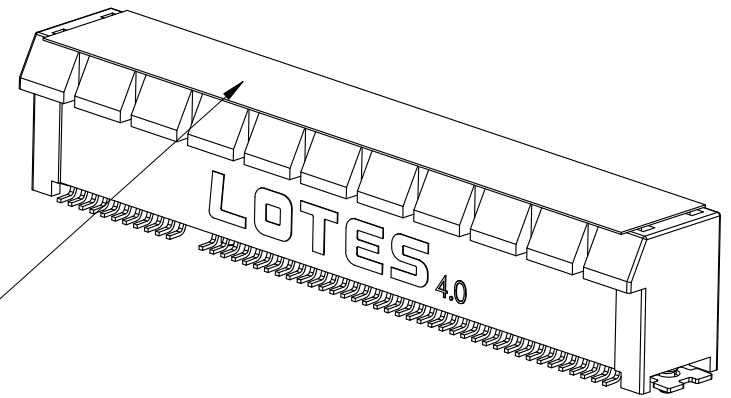
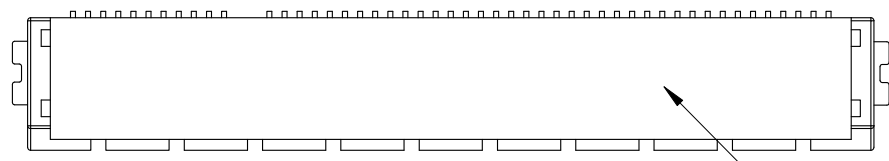
DETAIL "A"
SCALE 4/1



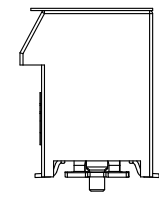
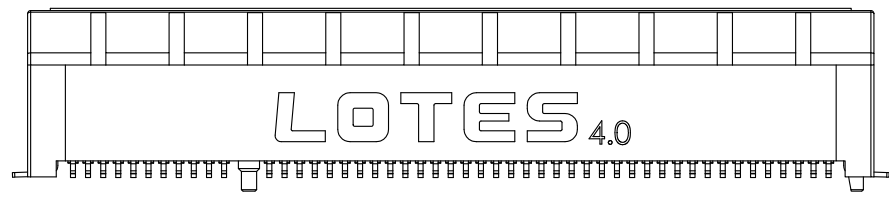
RECOMMENDED FOOTPRINT(TOP VIEW)
DEFAULT TOLERANCE ±0.05

| | | | | | |
|-------------------------------------|-------------------|-------------------------------|---|--------------|----------|
| GENERAL TOLERANCES UNLESS SPECIFIED | | PART NO. SEE TABLE | LOTES | | |
| .X ± 0.35 | X° ± 3° | | | | |
| .XX ± 0.25 | X° ± 2° | APPROVED BY Mark 10/26"22 | TITLE 98P PCI EXPRESS 4.0 SMT CONNECTOR TYPE | | |
| .XXX ± 0.15 | .XX° ± 1° | CHECKED BY Yao.Wu 10/26"22 | DWG NO. GAP-APCI0471 | | |
| CUSTOMER DRAWING | | DRAWN BY XuZong 10/26"22 | SHEET 2 / 3 | SCALE 1:1 | REV F |
| SIZE A4 | UNITS MM[INCH] | | | | |

| REV. | ECN NO./DESCRIPTION | DATE |
|------|---------------------|----------|
| D | R170324 | 12/15"20 |
| E | R170324 | 02/26"21 |
| F | NDR210056 | 10/26"22 |



MYLAR



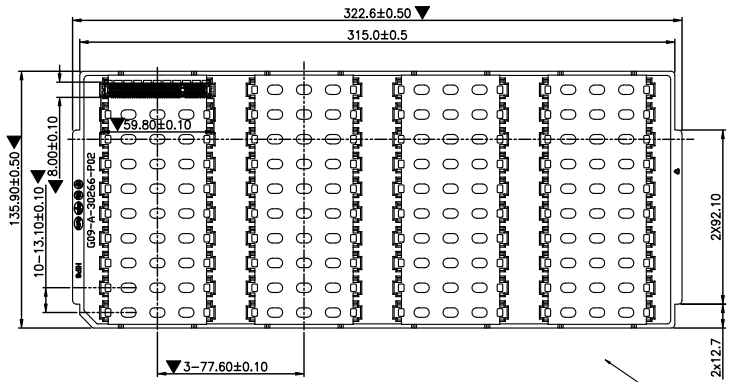
| | | | | | |
|--|-----------|-----------------|--|-------|-----|
| GENERAL TOLERANCES UNLESS SPECIFIED | | PART NO. | LOTES | | |
| .X ± 0.35 | X° ± 3° | SEE TABLE | | | |
| .XX ± 0.25 | .X° ± 2° | APPROVED BY | TITLE 98P PCI EXPRESS 4.0 SMT CONNECTOR TYPE | | |
| .XXX ± 0.15 | .XX° ± 1° | Mark 10/26"22 | | | |
| CUSTOMER DRAWING | | CHECKED BY | DWG NO. GAP-APCI0471 | | |
| | | Yao.Wu 10/26"22 | | | |
| SIZE | UNITS | DRAWN BY | SHEET | SCALE | REV |
| A4 | MM[INCH] | XuZong 10/26"22 | | | |

F
E
D
C
B
A

1 2 3 4 5 6 7 8

1 2 3 4 5 6 7 8

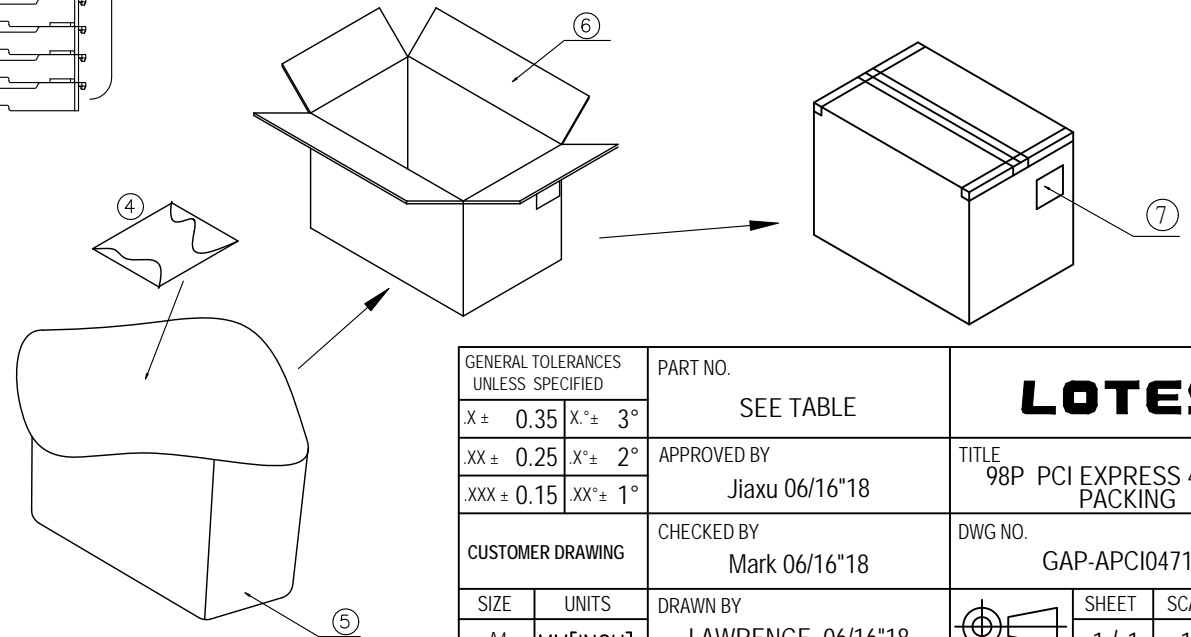
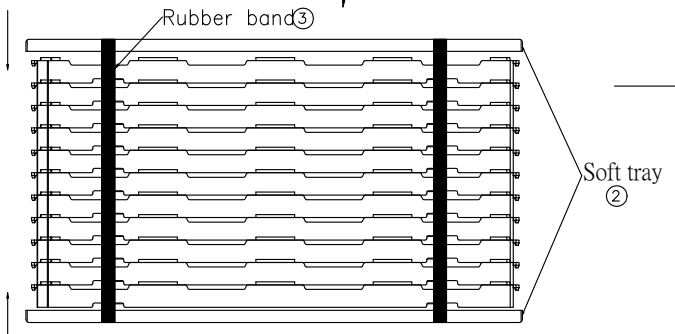
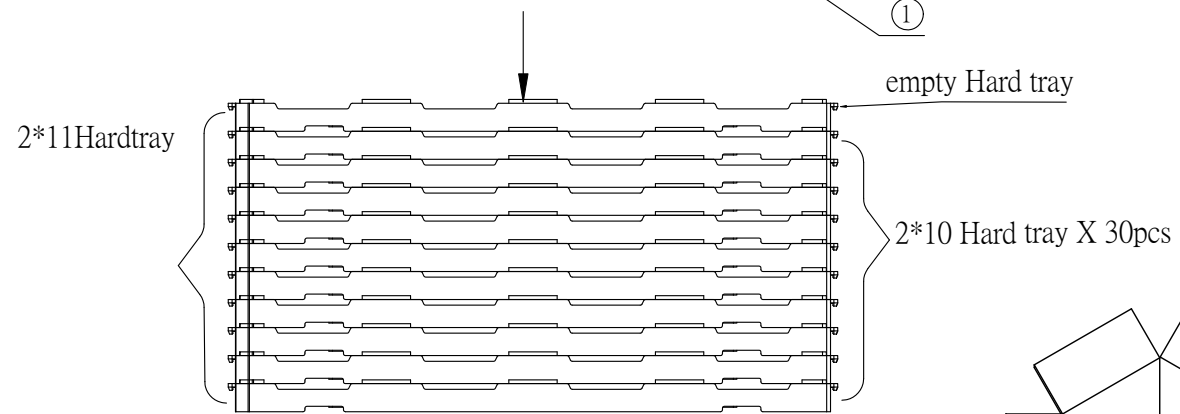
| REV. | ECN NO./DESCRIPTION | DATE |
|------|---------------------|----------|
| A | R170324 | 06/16"18 |
| | | |
| | | |



| PACKING MATERIAL | | | |
|------------------|----------------------|------------------------|-------|
| NO. | NAME | SPEC (mm) | QTY |
| 1 | HARD TRAY | 322.6*135.9*16.84 (mm) | 22PCS |
| 2 | SOFT TRAY | 323.2*135.8*8.0 | 4 PCS |
| 3 | RUBBER BAND | L320*W8*T2.0mm | 4 PCS |
| 4 | DESICCANT | 50g/BAG | 2 BAG |
| 5 | TRANSPARENT FILM BAG | 520*590*0.15(mm) | 2 PCS |
| 6 | CARTON | 350*300*195mm;K=K | 1 PCS |
| 7 | LABEL | | 1 PCS |

NOTES:

- 1. HARD TRAY CAPACITY: 40PCS
- 2. CARTON PACKING CAPACITY: 800PCS.



| | | | | | |
|-------------------------------------|-------------------|-------------------------------|-------------------------------|---------------------------|----------|
| GENERAL TOLERANCES UNLESS SPECIFIED | | PART NO. SEE TABLE | LOTES | | |
| .X ± 0.35 | X° ± 3° | | | | |
| .XX ± 0.25 | X° ± 2° | | CHECKED BY Mark 06/16"18 | DWG NO. GAP-APCI0471-1 | |
| .XXX ± 0.15 | .XX° ± 1° | CUSTOMER DRAWING | DRAWN BY LAWRENCE 06/16"18 | | |
| SIZE A4 | UNITS MM[INCH] | DRAWN BY LAWRENCE 06/16"18 | SHEET 1 / 1 | SCALE 1:1 | REV A |
| | | | | | |

1 2 3 4 5 6 7 8

F

F

TABLE

| NO. | PART NUMBER | HOUSING | TERMINAL | HOOK | MYLAR |
|-----|------------------|------------------------|-------------------------------|------|---------|
| 1 | APCI0471-P001C51 | HOUSING_BLACK;UL94 V-0 | PHOSPHOR BRONZE C5191_30u' Au | S50C | WITH |
| 2 | APCI0471-P001C03 | HOUSING_BLACK;UL94 V-0 | PHOSPHOR BRONZE C5191_30u' Au | S50C | WITH |
| 3 | APCI0471-K004C | HOUSING_BLACK;UL94 V-0 | PHOSPHOR BRONZE C5191_15u' Au | S50C | WITH |
| 4 | APCI0471-P002C | HOUSING_BLACK;UL94 V-0 | PHOSPHOR BRONZE C5191_15u' Au | S50C | WITH |
| 5 | APCI0471-P001A | HOUSING_BLACK;UL94 V-0 | PHOSPHOR BRONZE C5191_30u' Au | S50C | WITH |
| 6 | APCI0471-P001C | HOUSING_BLACK;UL94 V-0 | PHOSPHOR BRONZE C5191_30u' Au | S50C | WITH |
| 7 | APCI0471-P005A | HOUSING_BLACK;UL94 V-0 | PHOSPHOR BRONZE C5191_15u' Au | S50C | WITH |
| 8 | APCI0471-P001C56 | HOUSING_BLACK;UL94 V-0 | PHOSPHOR BRONZE C5191_30u' Au | S50C | WITH |
| 9 | APCI0471-P005C | HOUSING_BLACK;UL94 V-0 | PHOSPHOR BRONZE C5191_15u' Au | S50C | WITH |
| 10 | APCI0471-P007C | HOUSING_BLACK;UL94 V-0 | PHOSPHOR BRONZE C5191_30u' Au | S50C | WITH |
| 11 | APCI0471-P008C | HOUSING_BLACK;UL94 V-0 | PHOSPHOR BRONZE C5191_15u' Au | S50C | WITH |
| 12 | APCI0471-P001C11 | HOUSING_BLACK;UL94 V-0 | PHOSPHOR BRONZE C5191_30u' Au | S50C | WITH |
| 13 | APCI0471-P002C35 | HOUSING_BLACK;UL94 V-0 | PHOSPHOR BRONZE C5191_15u' Au | S50C | WITH |
| 14 | APCI0471-P018C | HOUSING_BLACK;UL94 V-0 | PHOSPHOR BRONZE C5191_30u' Au | S50C | WITHOUT |
| 15 | APCI0471-P019C | HOUSING_BLACK;UL94 V-0 | PHOSPHOR BRONZE C5191_15u' Au | S50C | WITHOUT |

E

E

D

D

C

C

B

B

A

A

1 2 3 4 5 6 7 8