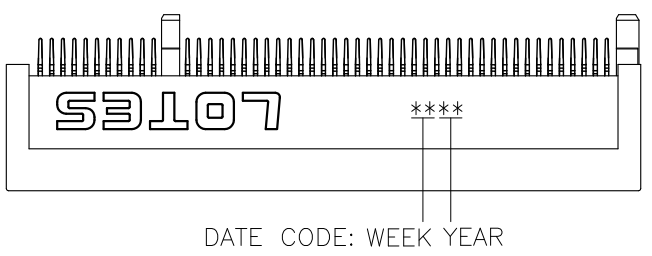
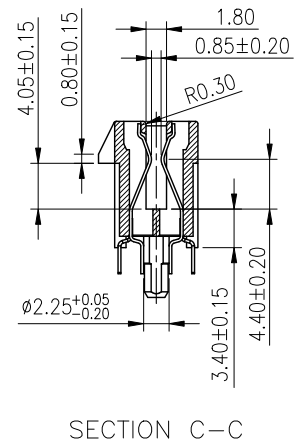
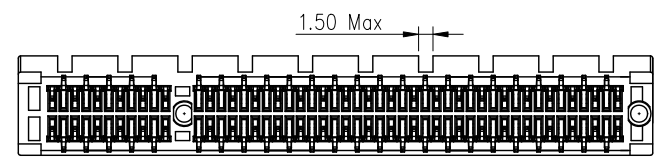
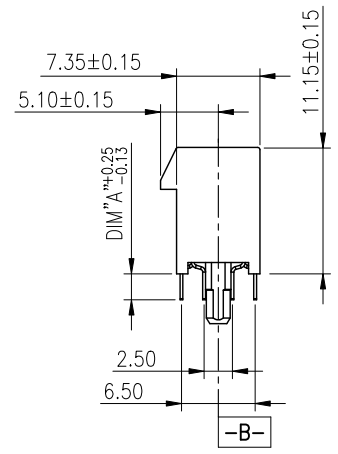
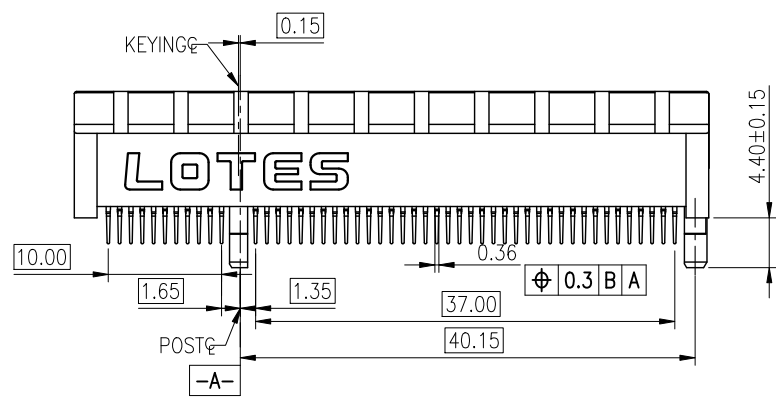
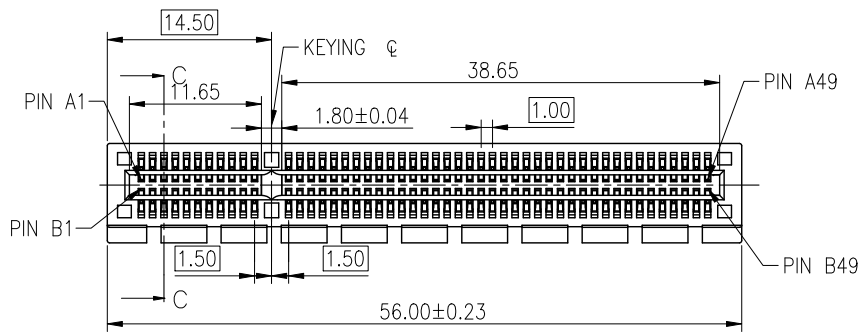
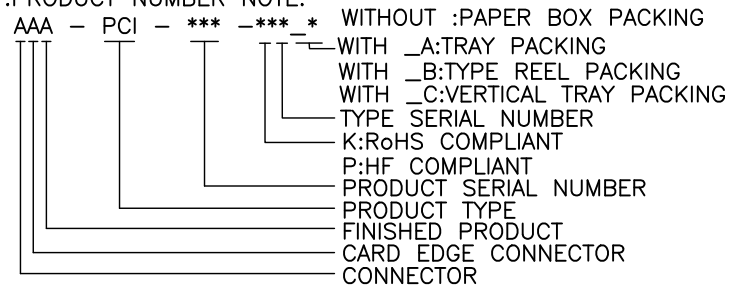


REV.	ECN NO./DESCRIPTION	DATE
3D	R160443	03/04'17
4	N170484	12/02'17
4A	R170082	02/06'18

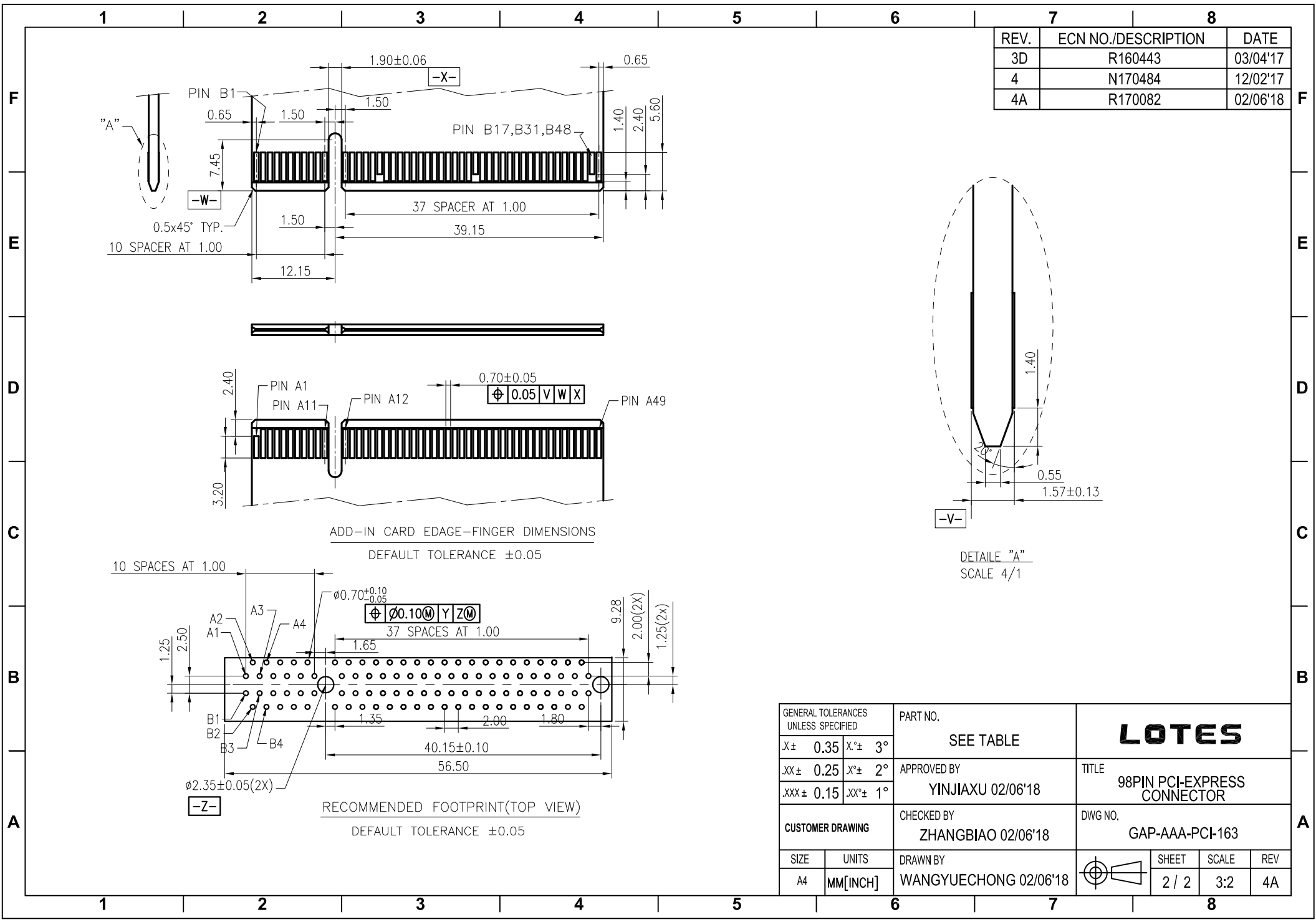


NOTES:

- MATERIAL:
HOUSING:HIGH TEMPERATURE THERMOPLASTIC.
(DETAILS REFER TO TABLE)
TERMINAL:PHOSPHOR BRONZE C5191&COPPER ALLOY C2680;
- FINISH:
CONTACT:
Ni 50u" MIN. UNDERPLATED OVER ALL.
Au PLATED ON CONTACT AREA.(SEE TABLE)
MATTE Sn 100u" MIN. PLATED ON SOLDER AREA.
- MECHANICAL SPEC:
DURABILITY: 50 MATING CYCLES.
RETENTION FORCE: 0.40 kgf MIN PER PIN.
MATING FORCE: 1.15N MAX PER PAIR.
UNMATING FORCE: 0.15N MIN PER PAIR.
- ELECTRICAL SPEC:
CURRENT RATING: 1.1A.
CONTACT RESISTANCE: 30 MILLIOHMS MAX. INITIAL.
INSULATION RESISTANCE: 1000 MEGOHMS MIN.
DIELECTRIC WITHSTANDING VOLTAGE: 500V AC MIN.
- SOLDERING:
THE CONNECTOR SHALL BE MOUNTED ON THE PCB,
THE TEMPERATURE OF THE SOLDER SHALL BE
260±5°C AND IMMERSION DURATION 10±2 SECONDS.
- RoHS COMPLIANT OR HALOGEN FREE COMPLIANT.
- PRODUCT NUMBER NOTE:



GENERAL TOLERANCES UNLESS SPECIFIED		PART NO.	LOTES		
.X ± 0.35	X° ± 3°	SEE TABLE	TITLE 98PIN PCI-EXPRESS CONNECTOR		
.XX ± 0.25	X° ± 2°	APPROVED BY YINJIAXU 02/06'18	DWG NO. GAP-AAA-PCI-163		
.XXX ± 0.15	.XX° ± 1°	CHECKED BY ZHANGBIAO 02/06'18	DRAWN BY WANGYUECHONG 02/06'18		
SIZE	UNITS	SHEET		SCALE	REV
A4	MM[INCH]	1 / 2		3:2	4A



REV.	ECN NO./DESCRIPTION	DATE
3D	R160443	03/04'17
4	N170484	12/02'17
4A	R170082	02/06'18

ADD-IN CARD EDGE-FINGER DIMENSIONS
 DEFAULT TOLERANCE ± 0.05

DETAIL "A"
 SCALE 4/1

RECOMMENDED FOOTPRINT(TOP VIEW)
 DEFAULT TOLERANCE ± 0.05

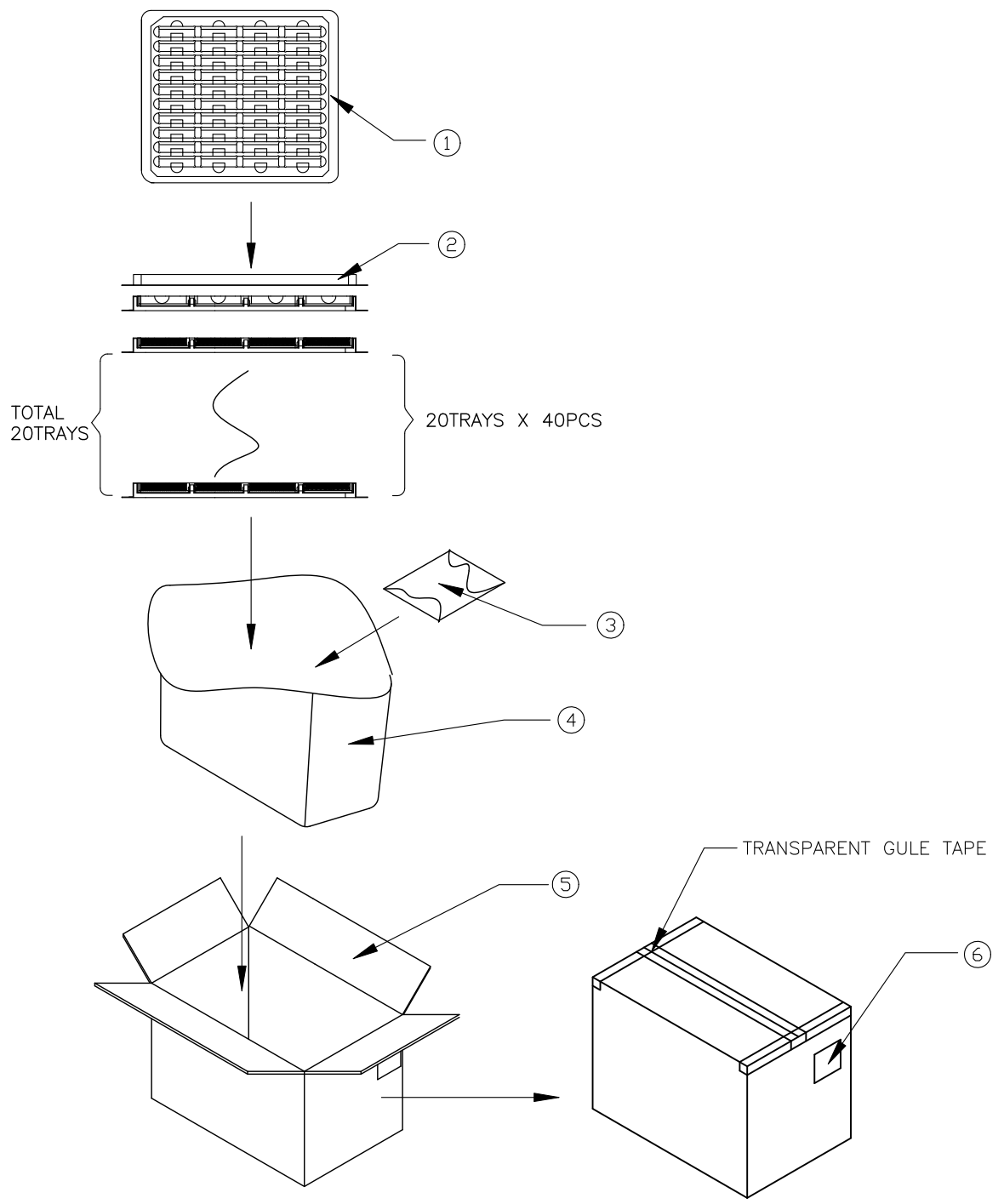
GENERAL TOLERANCES UNLESS SPECIFIED		PART NO. SEE TABLE	LOTES		
X \pm 0.35	X° \pm 3°				
.XX \pm 0.25	.X° \pm 2°				
XXX \pm 0.15	.XX° \pm 1°	CHECKED BY ZHANGBIAO 02/06'18	DWG NO. GAP-AAA-PCI-163		
CUSTOMER DRAWING		DRAWN BY WANGYUECHONG 02/06'18	SHEET 2 / 2	SCALE 3:2	REV 4A

REV.	ECN NO.	DATE
1	N130917	01/08'14

PACKING MATERIAL				
NO.	NAME	PART NO.	SPEC (mm)	QTY
1	TRAY	G09-A-30041-K03	314*275*14	20PCS
1	COVER	G09-A-30041-K02	314*275*14	20PCS
3	DESICCANT	G09-7-00002-K03	50g/BAG	1 PCS
4	TRANSPARENT FILM BAG	G09-6-40009-P01	400*280*420	1 PCS
5	CARTON	G09-1-30005-K03	323*280*257mm;	1 PCS
6	LABEL	N/A	N/A	1 PCS

NOTES:
 1.ONE TRAY PACKING CAPACITY: 40PCS;
 2.CARTON PACKING CAPACITY:800PCS.

GENERAL TOLERANCES UNLESS SPECIFIED		PART NO. SEE TABLE	LOTES			
.X±0.35	X°±3'					
.XX±0.25	.X°±2'	APPROVED BY BILL	TITLE 98PIN PCI EXPRESS CONNECTOR PACKING			
.XXX±0.15	.XX°±1.0'	CHECKED BY BILL	DWG NO. GAP-AAA-PCI-163-2			
SIZE A4	UNITS MM[INCH]	DRAWN BY maiyingkai		SHEET 1 / 1	SCALE 1:1	REV 1



1

2

3

4

5

6

7

8

F

F

PART NUMBER	SPECIFICATION	DIM"A"
AAA-PCI-163-K01_A	PA46+40%GF UL-94V0_BLACK;PHOSPHOR BRONZE C5191_15u";POST; L.T.	2.30
AAA-PCI-163-K02_A	PA46+40%GF UL-94V0_BLACK;PHOSPHOR BRONZE C5191_G/F;POST; L.T.	2.30

E

E

D

D

C

C

B

B

A

A

8