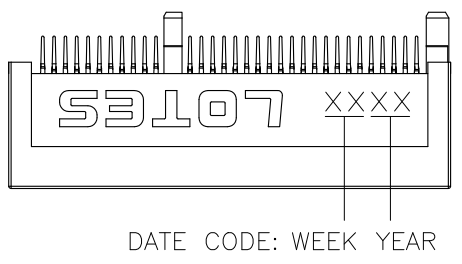
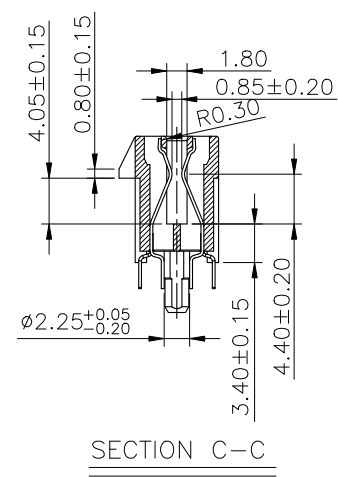
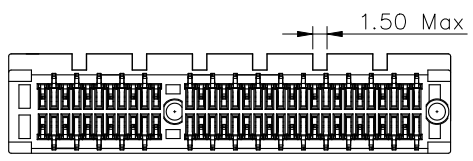
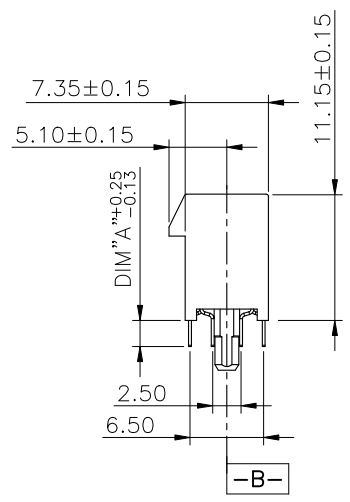
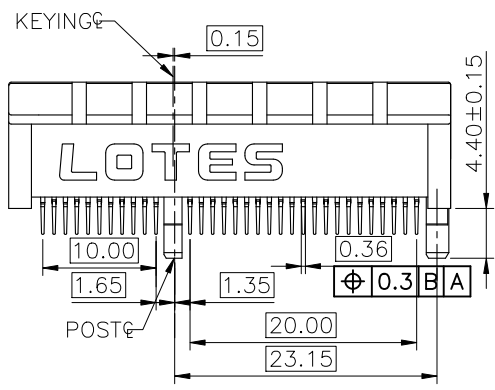
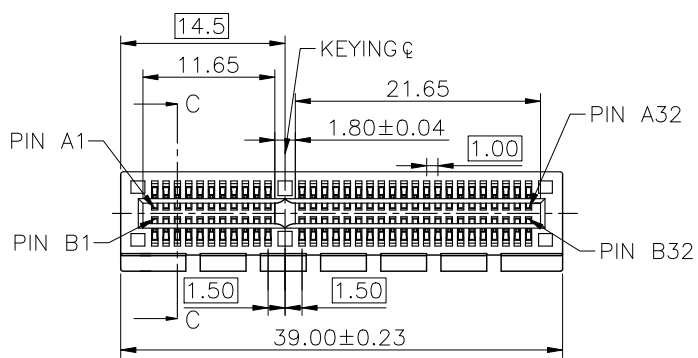
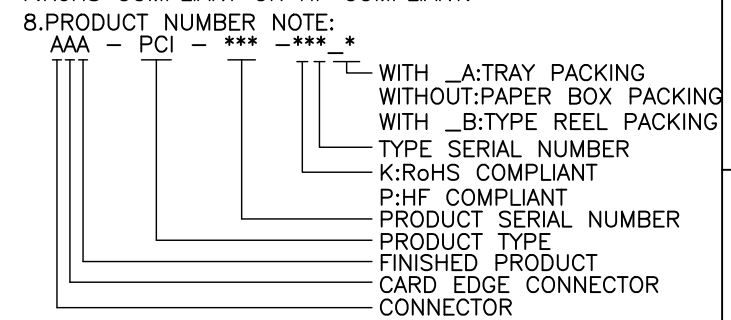


REV.	ECN NO./DESCRIPTION	DATE
2A	R160443	09/26'16
3	N170484	12/02'17
3A	R180014	06/19'18



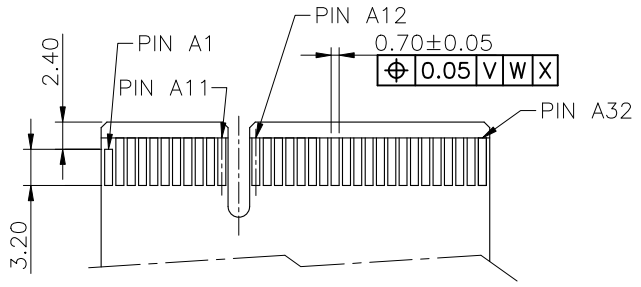
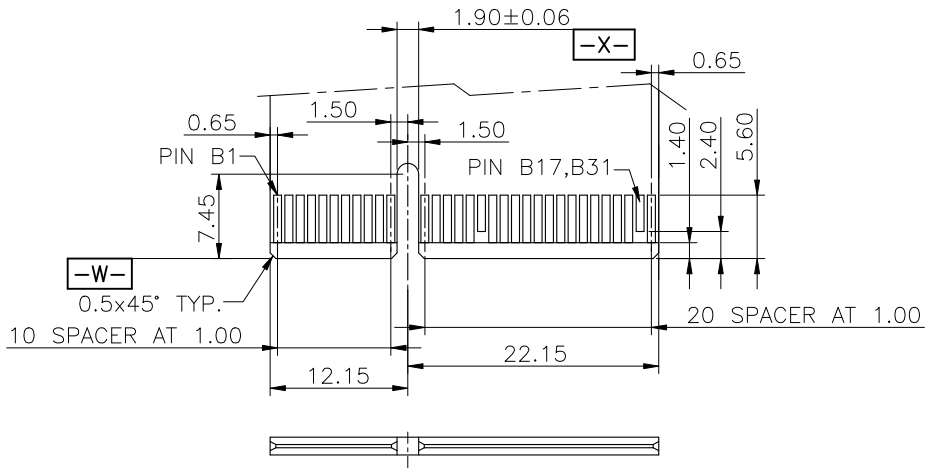
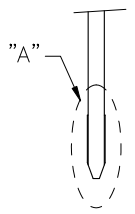
NOTES:

- MATERIAL:**  
HOUSING: HIGH TEMPERATURE THERMOPLASTIC.  
TERMINAL: PHOSPHOR BRONZE C5191 OR BRASS C2680.
- FINISH:**  
TERMINAL: 50u" NI PLATING OVER ALL;  
100u" MATTE Sn PLATING ON SOLDER TAIL;  
Au PLATING ON CONTACT AREA.
- MECHANICAL SPEC:**  
DURABILITY: 50 CYCLES.  
RETENTION FORCE: 0.40 kgf MIN PER PIN.  
MATING FORCE: 1.15N MAX PER PAIR.  
UNMATING FORCE: 0.15N MIN PER PAIR.
- ELECTRICAL SPEC:**  
CURRENT RATING: 1.1A.  
CONTACT RESISTANCE: 30 MILLIOHMS MAX. INITIAL.  
INSULATION RESISTANCE: 1000 MEGOHMS MIN.  
DIELECTRIC WITHSTANDING VOLTAGE: 500V AC MIN.
- WAVE SOLDERING:**  
THE CONNECTOR SHALL BE MOUNTED ON THE PCB,  
THE TEMPERATURE OF THE SOLDER SHALL BE  
260±5°C AND IMMERSION DURATION 10±2 SECONDS.
- OPERATING TEMPERATURE RANGE** -40~85°C .
- RoHS COMPLIANT OR HF COMPLIANT.**

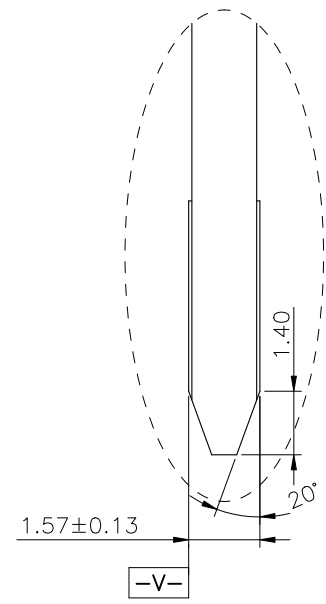


GENERAL TOLERANCES UNLESS SPECIFIED		PART NO.	<b>LOTES</b>		
.X ± 0.35	X° ± 3°	SEE TABLE			
.XX ± 0.25	X° ± 2°	APPROVED BY	TITLE		
.XXX ± 0.15	.XX° ± 1°	YINJIAXU 06/19'18	64PIN PCI-EXPRESS CONNECTOR		
CUSTOMER DRAWING		CHECKED BY	DWG NO.		
		MARK ZHANG 06/19'18	GAP-AAA-PCI-159		
SIZE	UNITS	DRAWN BY	SHEET	SCALE	REV
A4	MM [INCH]	ZHONG WEIXUE 06/19'18			

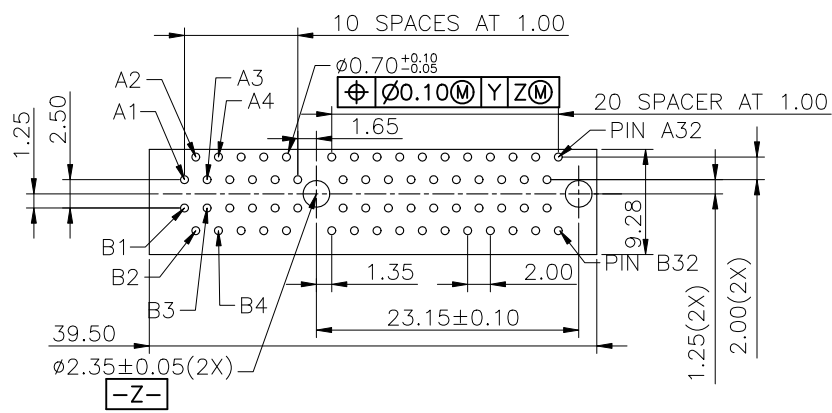
REV.	ECN NO./DESCRIPTION	DATE
2A	R160443	09/26'16
3	N170484	12/02'17
3A	R180014	06/19'18



ADD-IN CARD EDGE-FINGER DIMENSIONS  
DEFAULT TOLERANCE ±0.05.



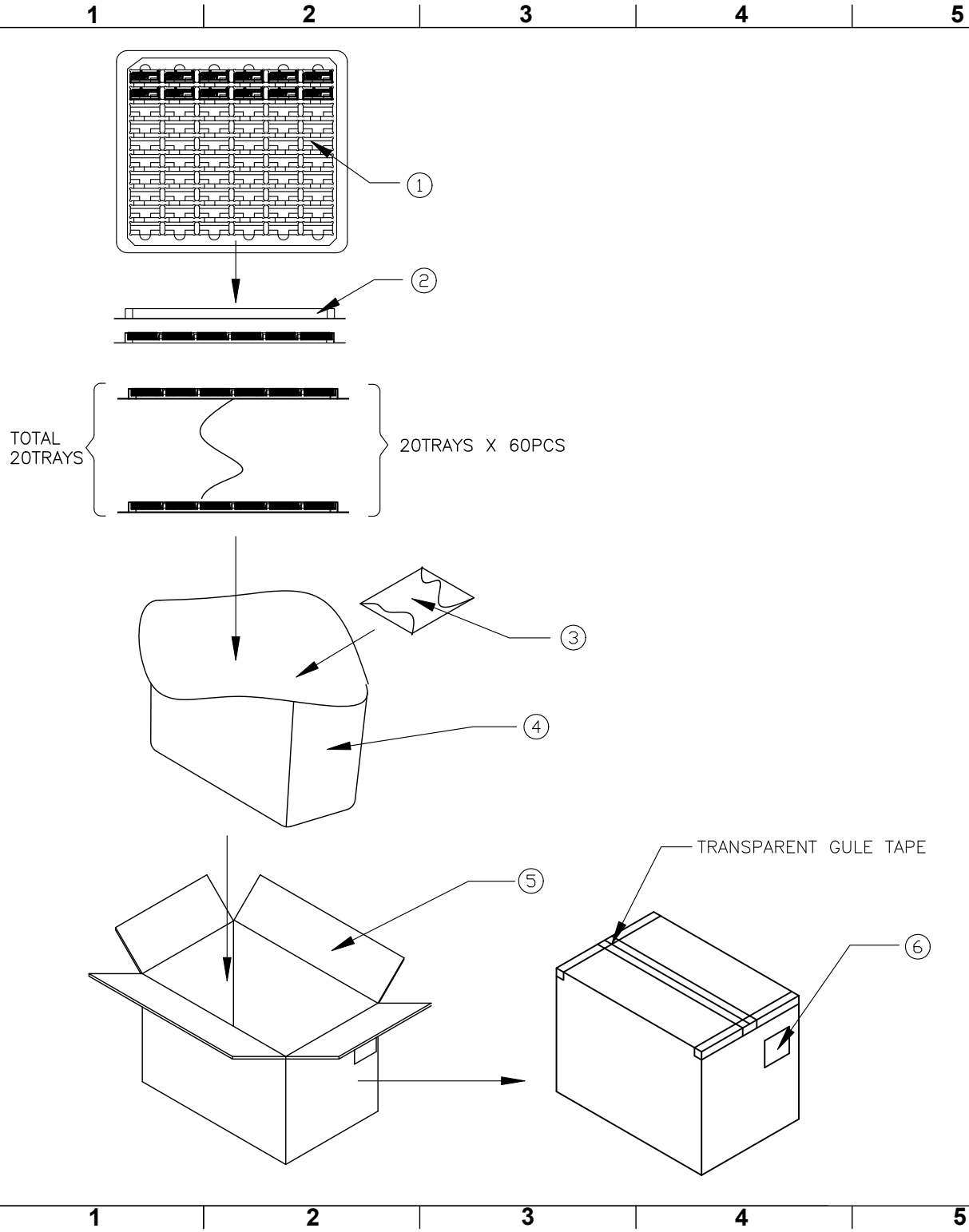
DETAIL "A"  
SCALE 4/1



RECOMMENDED FOOTPRINT(TOP VIEW)  
DEFAULT TOLERANCE ±0.05.

GENERAL TOLERANCES UNLESS SPECIFIED		PART NO.	<b>LOTES</b>		
.X ± 0.35	X.° ± 3°	SEE TABLE	TITLE 64PIN PCI-EXPRESS CONNECTOR		
.XX ± 0.25	X.° ± 2°	APPROVED BY YINJIAXU 06/19'18	DWG NO. GAP-AAA-PCI-159		
.XXX ± 0.15	.XX° ± 1°	CHECKED BY MARK ZHANG 06/19'18	SHEET 2 / 2		
CUSTOMER DRAWING		DRAWN BY ZHONG WEIXUE 06/19'18	SCALE 3:2	REV 3A	

REV.	ECN NO.	DATE
1	N130293	06/24'13



PACKING MATERIAL				
NO.	NAME	PART NO.	SPEC (mm)	QTY
1	TRAY			20PCS
1	COVER			20PCS
3	DESICCANT			1 PCS
4	TRANSPARENT FILM BAG			1 PCS
5	CARTON			1 PCS
6	LABEL			1 PCS

NOTES:  
 1.ONE TRAY PACKING CAPACITY: 60PCS;  
 2.CARTON PACKING CAPACITY:1200PCS.

GENERAL TOLERANCES UNLESS SPECIFIED		PART NO. SEE TABLE	<b>LOTES</b>			
.X±0.35	X°±3'					
.XX±0.25	.X°±2'	APPROVED BY BILL	TITLE 64PIN PCI EXPRESS CONNECTOR PACKING			
.XXX±0.15	.XX°±1.0'	CHECKED BY BILL	DWG NO. GAP-AAA-PCI-159-2			
SIZE	UNITS	DRAWN BY		SHEET	SCALE	REV
A4	MM[INCH]	maiyingkai		1 / 1	1:1	1

