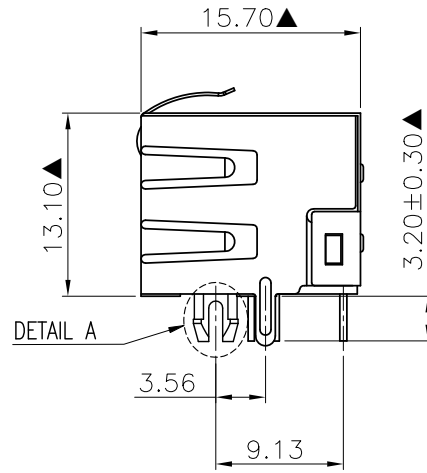
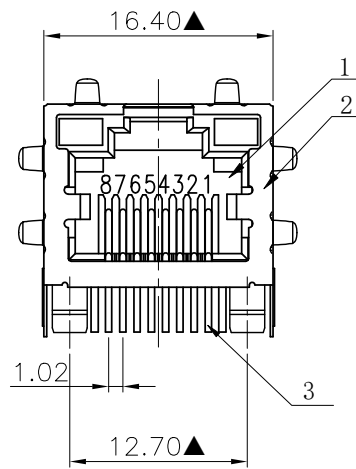


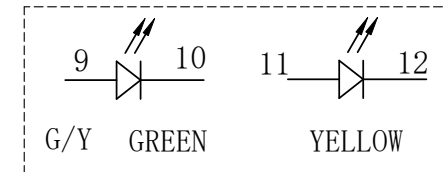
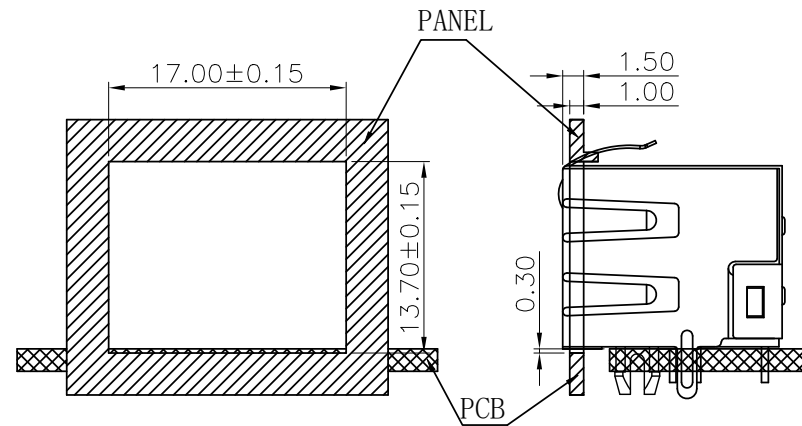
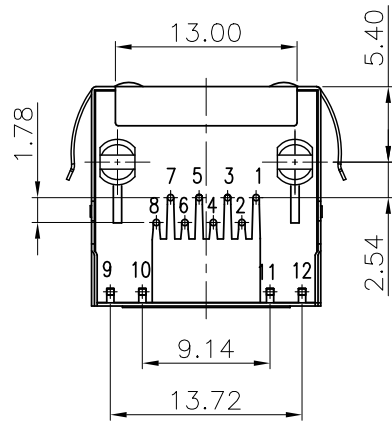
NO.	ECN NO.	DESCRIPTION	REV.	DRAW	DATE
1					
2					
3					



42022-XX G X X 1

规格流水码

电镀代码
05-G/F
11-3u"
15-6u"
19-15u"
23-30u"

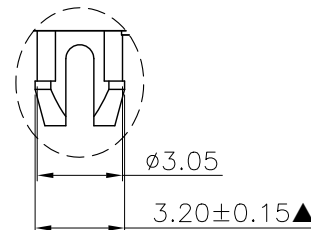
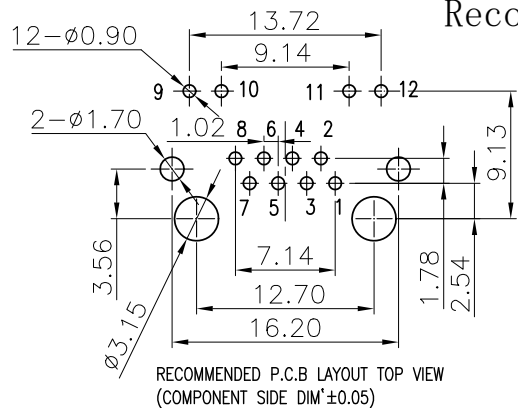


LED PIN DEFINE

Recommended panel cutout bezel opening below top of PCB

MATERIALS:

- Housing: PA46 BLACK UL94V-0 (RoHS).
 - Shielding: 0.20mm Thickness Copper Alloy with Nickel Plated (RoHS).
 - Contact: 0.46mm DIA Phosphor Bronze gold Plating Over Nickel (RoHS).
- ※产品适用于波峰焊制程
※MATES WITH MODULAR PLUG CONFORMING TO FCC PART 68, SUBPAR F.
※凡标注▲记号者, 为重点尺寸。



DETAIL A 2:1

产品客户图 Customer Drw		设计 DESIGN		品名 TITLE	
未注公差 TOLERANCE UNLESS OTHERWISE SPECIFIED	.X ±0.35 .XX ±0.25 .XXX ±0.15 X° ±2°	角法 PROJ.	设计 DESIGN	品名 TITLE	5631-S-K6-F-L-8C(G/Y)
比例 SCALE	1:1	大小 SIZE	校对 CHECKED	料号 ITEM NO.	42022-00GXX1
张数 SHEET	1/1	版本 REV.	核准 APPROVED	图号 DWG NO.	GLG-WL-012

GLGNET® 深圳市方向电子股份有限公司
Shenzhen GLGNET Electronics Co.,LTD.