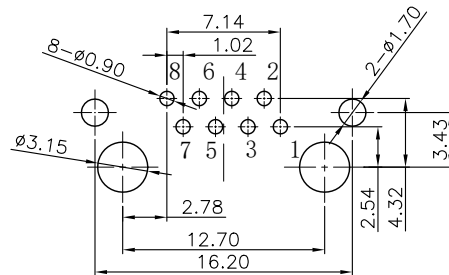
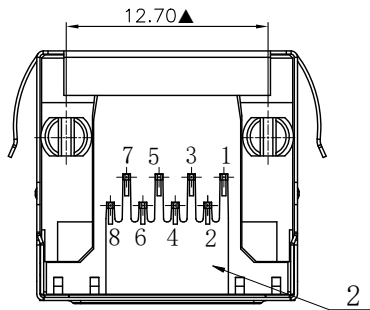
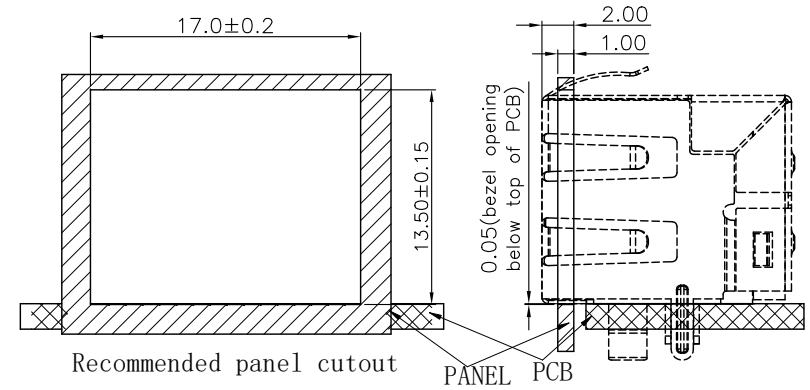
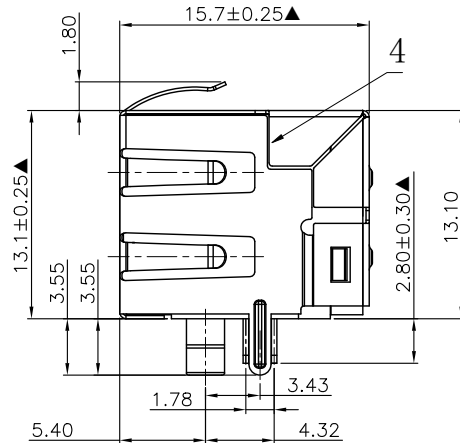
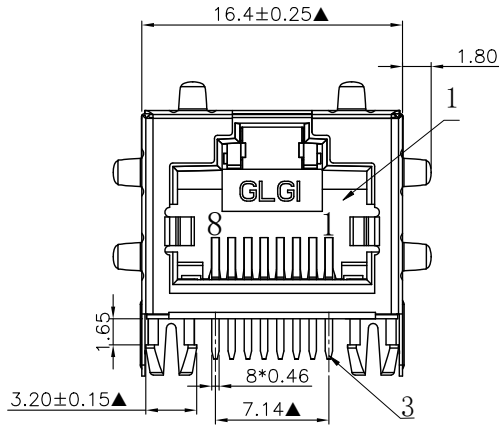


NO.	ECN NO.	DESCRIPTION	REV.	DRAW	DATE
1					
2					
3					



RECOMMENDED P. C. B LAYOUT TOP VIEW
(COMPONENT SIDE TOLERANCE ± 0.05)

41212-XX X X X 1

规格流水码

电镀规格

S 半金亮锡

M 半金雾锡

电镀代码
-05-G/F
-09-2u"
-11-3u"
-15-6u"
-19-15u"
-23-30u"
-24-50u"

NOTE:

- Housing: Glass Filled PA46 BLACK UL94V-0 (RoHS).
 - Insert: Glass Filled PBT UL94V-0 (RoHS).
 - Contact: 0.35*0.46 Phosphor Bronze gold Plating Over Nickel (RoHS).
 - SHELL: 0.2mm Thickness Copper Alloy with Nickel Plated (RoHS).
- ※MATES WITH MODULAR PLUG CONFORMING TO FCC PART 68, SUBPART F.

产品客户图 Customer Drw							
未注公差 TOLERANCE UNLESS OTHERWISE SPECIFIED	. X	±0.35	设计 DESIGN	品名 TITLE	5631-Q-S-K6-F-8C-6A-02	GLGNET® 深圳市方向电子股份有限公司 Shenzhen GLGNET Electronics Co.,LTD.	
	. XX	±0.25					
	. XXX	±0.15					
	X°	±2°					
比例 SCALE	1:1	角法 PROJ.	设计 DESIGN	品名 TITLE	5631-Q-S-K6-F-8C-6A-02		
张数 SHEET	1/1	大小 SIZE	A4	校对 CHECKED	料号 ITEM NO.	41212-02XXX1	
单位 UNIT	mm	版本 REV.	P0	核准 APPROVED	图号 DWG NO.	GLG-W0-688	