



Features

- High current; very low DCR
- Soft saturation makes them

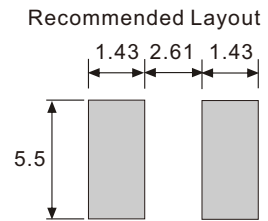
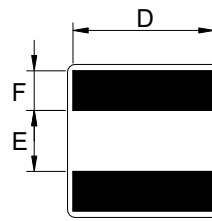
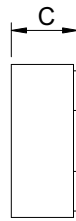
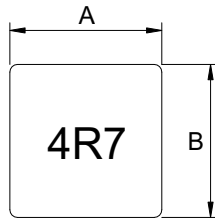
General Specifications

- Storage temp range: -55°C to +125°C
- Operating temp range: -40°C to +125°C
- Resistance to Soldering Heat +260°C for 10 Sec.

General Specifications

- Inductance tested at 100kHz, 1.0Vrms
- Irms: Current that cause 40°C rise from 25°C
- Isat: Inductance 30% drop max at DC current.

Dimensions & Configurations (Unit:mm)



Type	A (Max.)	B (Max.)	C (Max.)	D (Typ.)	E (±0.25)	F (±0.05)
MXAL6020	6.56	6.58	2.1	5.50	2.79	1.25
MXAL6030	6.56	6.58	3.1	5.50	2.79	1.25
MXAL6060	6.56	6.58	6.1	5.50	2.79	1.25

Electrical Characteristics For MXAL6020/6030/6060 Series

Part Number	Inductance (±20%) [uH]	DCR(max) [mΩ]	Isat [A] (Max.)	Irms [A] (Max.)
MXAL6020-R12M	0.12	1.85	45.0	27.0
MXAL6020-R16M	0.16	2.70	41.0	26.0
MXAL6020-R27M	0.27	3.85	29.5	25.0
MXAL6020-R45M	0.45	5.05	24.5	22.0
MXAL6020-R60M	0.60	7.10	20.5	18.5
MXAL6020-R90M	0.90	11.10	19.1	15.2
MXAL6020-1R1M	1.10	13.10	17.1	12.0
MXAL6030-R18M	0.18	1.75	39.0	32.0
MXAL6030-R33M	0.33	2.53	30.0	25.0
MXAL6030-R56M	0.56	3.31	29.0	22.0
MXAL6030-1R0M	1.0	6.18	23.0	18.0
MXAL6030-1R2M	1.2	7.50	22.0	16.0
MXAL6030-1R8M	1.8	10.52	18.2	14.0
MXAL6030-2R2M	2.2	13.97	15.9	10.0
MXAL6060-3R3M	3.3	20.81	12.2	8.0
MXAL6060-4R7M	4.7	14.40	10.5	11.0
MXAL6060-5R6M	5.6	15.90	9.9	10.0
MXAL6060-6R8M	6.8	20.80	9.2	9.0
MXAL6060-8R2M	8.2	26.40	8.4	8.0
MXAL6060-100M	10	29.82	7.6	7.0
MXAL6060-150M	15	43.75	5.8	6.0
MXAL6060-220M	22	60.63	5.6	5.0
MXAL6060-330M	33	105.0	3.7	3.6