

Features

- High current; very low DCR
- Soft saturation makes them
- AEC-200 Grade 1 (-40°C to +125°C)

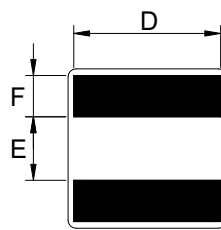
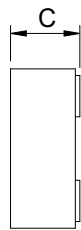
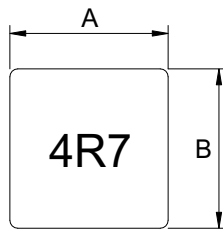
General Specifications

- Storage temp range: -55°C to +125°C
- Operating temp range: -40°C to +125°C
- Resistance to Soldering Heat +260°C for 10 Sec.

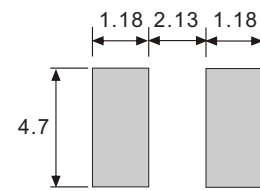
General Specifications

- Inductance tested at 100kHz, 1.0Vrms
- Irms: Current that cause 40°C rise from 25°C
- Isat: Inductance 30% drop max at DC current.

► Dimensions & Configurations (Unit:mm)



Recommended Layout



Type	A (Max.)	B (Max.)	C (Max.)	D (Typ.)	E (±0.25)	F (±0.05)
MXAL5020	5.5	5.5	2.1	4.2	2.31	1.0
MXAL5030	5.5	5.5	3.1	4.2	2.31	1.0
MXAL5050	5.5	5.5	5.1	4.2	2.31	1.0

► Electrical Characteristics For MXAL5020/5030/5050 Series

Part Number	Inductance (±20%) [μH]	DCR(max) [mΩ]	Isat [A] (Max.)	Irms [A] (Max.)
MXAL5020-R16M	0.16	5.00	24.2	18.8
MXAL5020-R33M	0.33	7.68	17.1	14.4
MXAL5020-R56M	0.56	9.54	14.1	13.9
MXAL5020-R80M	0.80	11.80	12.0	13.0
MXAL5020-1R2M	1.2	20.50	9.5	9.4
MXAL5030-R16M	0.16	2.36	31.0	22.2
MXAL5030-R33M	0.33	3.52	26.0	19.2
MXAL5030-R60M	0.60	4.52	19.8	17.7
MXAL5030-R80M	0.80	5.65	18.5	13.0
MXAL5030-1R0M	1.0	9.40	14.0	11.1
MXAL5030-1R2M	1.2	12.40	12.5	10.4
MXAL5030-2R2M	2.2	14.50	9.2	9.7
MXAL5030-3R3M	3.3	23.30	8.7	8.1
MXAL5030-4R7M	4.7	40.00	6.7	5.9
MXAL5050-5R6M	5.6	25.80	6.3	7.2
MXAL5050-6R8M	6.8	29.45	6.0	6.4
MXAL5050-8R2M	8.2	34.95	5.6	6.1
MXAL5050-100M	10	45.00	4.9	4.9
MXAL5050-150M	15	76.70	3.7	3.9
MXAL5050-220M	22	99.65	3.6	3.4