



Features

- High current; very low DCR
- Soft saturation makes them
- AEC-200 Grade 1 (-40°C to +125°C)

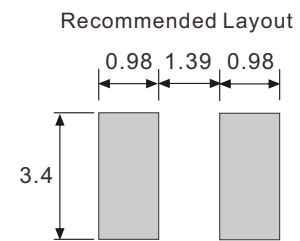
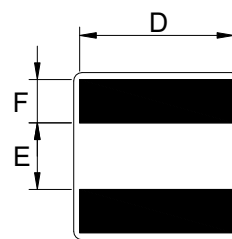
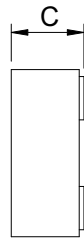
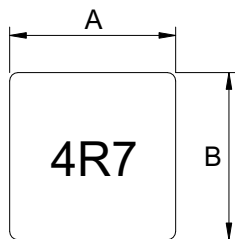
General Specifications

- Storage temp range: -55°C to +125°C
- Operating temp range: -40°C to +125°C
- Resistance to Soldering Heat +260°C for 10 Sec.

General Specifications

- Inductance tested at 100kHz, 1.0Vrms
- Irms: Current that cause 40°C rise from 25°C
- Isat: Inductance 30% drop max at DC current.

► Dimensions & Configurations (Unit:mm)



Type	A(±0.3)	B(±0.3)	C (Max.)	D (Typ.)	E (±0.25)	F (±0.05)
MXAL4020	4.0	4.0	2.1	3.25	1.57	0.82
MXAL4030	4.0	4.0	3.1	3.25	1.57	0.82
MXAL4040	4.0	4.0	4.1	3.25	1.57	0.82

► Electrical Characteristics For MXAL4020/4030/4040 Series

Part Number	Inductance [uH]	DCR(max) [mΩ]	SRF typ [MHz]	Isat [A] (Max.)	Irms [A] (Max.)
MXAL4020-R22M	0.22	6.4	191	18.7	16.8
MXAL4020-R40M	0.40	8.3	145	12.5	14.0
MXAL4020-R60M	0.60	10.5	106	10.4	11.7
MXAL4020-1R0M	1.0	14.6	79	8.7	9.6
MXAL4020-1R2M	1.2	19.5	69	7.9	9.0
MXAL4020-1R5M	1.5	23.6	64	7.1	7.5
MXAL4020-2R2M	2.2	38.7	52	5.6	5.5
MXAL4030-3R3M	3.3	28.6	43	5.5	6.6
MXAL4030-4R7M	4.7	44.1	36	4.5	5.1
MXAL4030-6R8M	6.8	74.1	29	3.6	3.9
MXAL4040-8R2M	8.2	66.9	27	4.0	3.4
MXAL4040-100M	10	92.4	24	3.0	3.1
MXAL4040-150M	15	120.0	20	2.8	2.8