

YANSEN 元存<sup>®</sup>

**YANSEN<sup>®</sup>**

**Industrial Storage and Memory Solution**

Shenzhen KingSpec Electronic Technology Co., Ltd.

# CONTENTS

**01**

About YANSEN

Products

**02**

**03**

Why YANSEN

Case Study

**04**

# 01

## YANSEN INTRODUCTION

- Company Overview
- Factory Tour
- Factory Equipment
- Factory Advantages
- Company History
- Credentials, Certifications, Compliances & Associations

## Company Overview



Founded: 2007



Employee: 200



Annual Sales: 10 Million Pieces



Offices: China Japan Germany



Industrial: **YANSEN** ACstorage

Consumer: **KingSpec** Memo Stone One BOOM

**ONE STOP**  
Industrial Storage Solution

RESEARCH

Manufacture

SALE



## Factory Tour



## Factory Equipment

Fully automated factory with high-speed SMT production lines and AOI testing equipment. YANSEN meets various customized needs and quality requirements for storage products with precision and high standards. Monthly capacity reaches **700k pcs.**



GKG Screen Printer



Samsung Hanwha  
P&P Machine



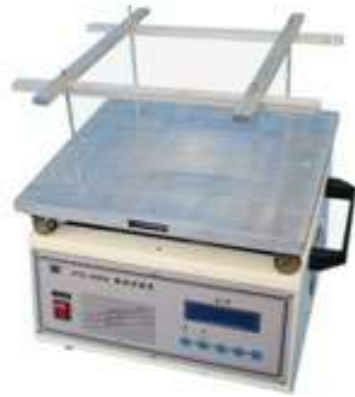
JT Reflow Oven



A-Leader AOI

## Factory Equipment

These testing machines are essential for ensuring the **reliability and durability** of industrial products by simulating various environmental conditions. They validate product performance under temperature, humidity, and vibration, enhancing overall quality assurance.



Vibration Testing  
Machine



High-Low Temperature  
Test Chamber



Temp and Humidity  
Test Chamber



Precision High  
Temperature Oven

## Factory Advantages

### Control over quality

Completed control over production process, ensure **consistent quality** standards.



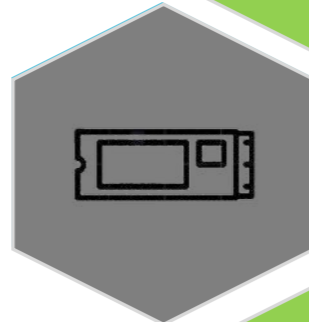
### Brand Loyalty

Factory-owned brands can foster loyalty among consumers valuing quality and reliability, driving **repeat purchases and referrals**.



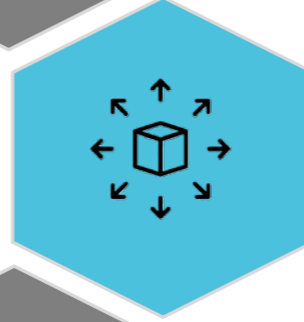
### Product development

Flexibility in innovate and **develop products tailored to specific market** segments or consumer preferences without the constraints imposed by retailers or distributors



### Control over Distribution

Manufacturers have greater control over distribution and can **avoid channel conflicts and manage a good lead time**



### No third party involved

Compared to selling through third-party retailers. Manufacturer has more control over production costs and pricing, which leads to **higher profit margins**.



### Market Expansion

Be able to **diversify our production line with multiple brands**, each targeting specific focus groups, to address niche markets and achieve greater revenue.





## Company History

2007-2009

- **Company established**
- Launched 2.5 inch SSD, PCIe, Pata & DOM product line
- Passed CE, FCC, RoHS certification.
- Opened brand stores in Beijing, Shanghai, Guangzhou and Shenzhen
- **Joined SSD Association**

- **Expanded company** size and diversified product line
- **Passed ISO9001:2008 certification**
- More stores in China and attended 15+ international exhibitions

2010-2012

- **YANSEN established**
- Released NVMe PCIe Gen2
- Started multiple global B2C e-commerce business
- **Wining the "China High Tech Enterprise "award**

2013-2015

- Developed high speed Type-C portable SSD
- **KingSpec brand image "Dragon "was created**
- More SSD series were developed

2016-2018

- More **breakthrough** on different SSD series and solutions.
- Expanded the scale of Production & Research team, increased new lab
- **KingSpec Won The 2021-2022 AliExpress Top 10 Brands**
- Japan branch established

2019-2023

- Established Germany After-sale Service Center
- Build-up Global Sales teams

2024-future

### **FUTURE 3 Years**

- Initiate IPO
- Triple annual income
- YANSEN grow as prime business

## Credentials, Certifications, Compliances & Associations



China National High-Tech Enterprise



China Little Giant Enterprise



Provincial Listed Trustworthy Enterprise



ISO9001:2015



REACH



RoHS



CE



FCC



100+ Patents for utility, design and invention



Registered in 30+ countries  
Protected by 50+ countries

## Common SSD

	SATA SSD					NVMe	Enterprise	
Interface	2.5" SATA	mSATA	M.2 SATA 2280/2242	SATA Half Slim	Half mSATA	M.2 PCIe Gen3 x 4/2 2280/2240	2.5" SATA	U.2
Capacity	32GB-2TB	8GB-2TB	8GB-2TB	8GB-256GB	32GB-1TB	64GB-2TB	960GB-7.68TB	3.84TB- 7.68TB
NAND	SLC,pSLC,MLC,TLC			SLC,MLC	TLC			
Operating Temp.	0-70°C, -20-75°C, -40-85°C				0-70°C	0-70°C, -20-75°C, -40-85°C	0-70°C, -20°C~75°C	



## Cards & Legacy SSD

	Cards		Legacy SSD				
Interface	CF Card IDE	CFAST SATA	2.5" PATA	SATA DOM Vertical/Horizontal	USB DOM	IDE DOM 44PIN/40PIN	1.8" ZIF
Capacity	8-128GB	8GB-1TB	8-256GB	8-256GB	8-64GB	8-64GB	8-128GB
NAND	SLC,MLC	SLC,MLC,TLC	SLC,MLC	SLC,MLC,TLC	SLC,MLC	SLC,MLC	MLC
Operating Temp.	0-70°C, -20-75°C, -40-85°C					0-70°C	

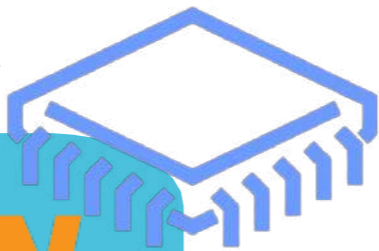


## Industrial DDR

	DDR3 SO-DIMM U-DIMM	DDR 4 SO-DIMM U-DIMM	DDR5 SO-DIMM U-DIMM
Capacity	2-8GB	8-32GB	16-32GB
Frequency	1066-1866 MT/s	2133-3200 MT/s	4800 MT/s
Voltage	1.35 / 1.5 V	1.2 V	1.1 V
ECC (Optional)	/	✓	✓
Operating Temp.	0-70°C, -20-75°C, -40-85°C		



Controller



**PHISON**

 SiliconMotion

**Maxio**

*hyperston*®

**INNOGRIT**

NAND



**Micron**

**TOSHIBA**

**KIOXIA**



**SAMSUNG**

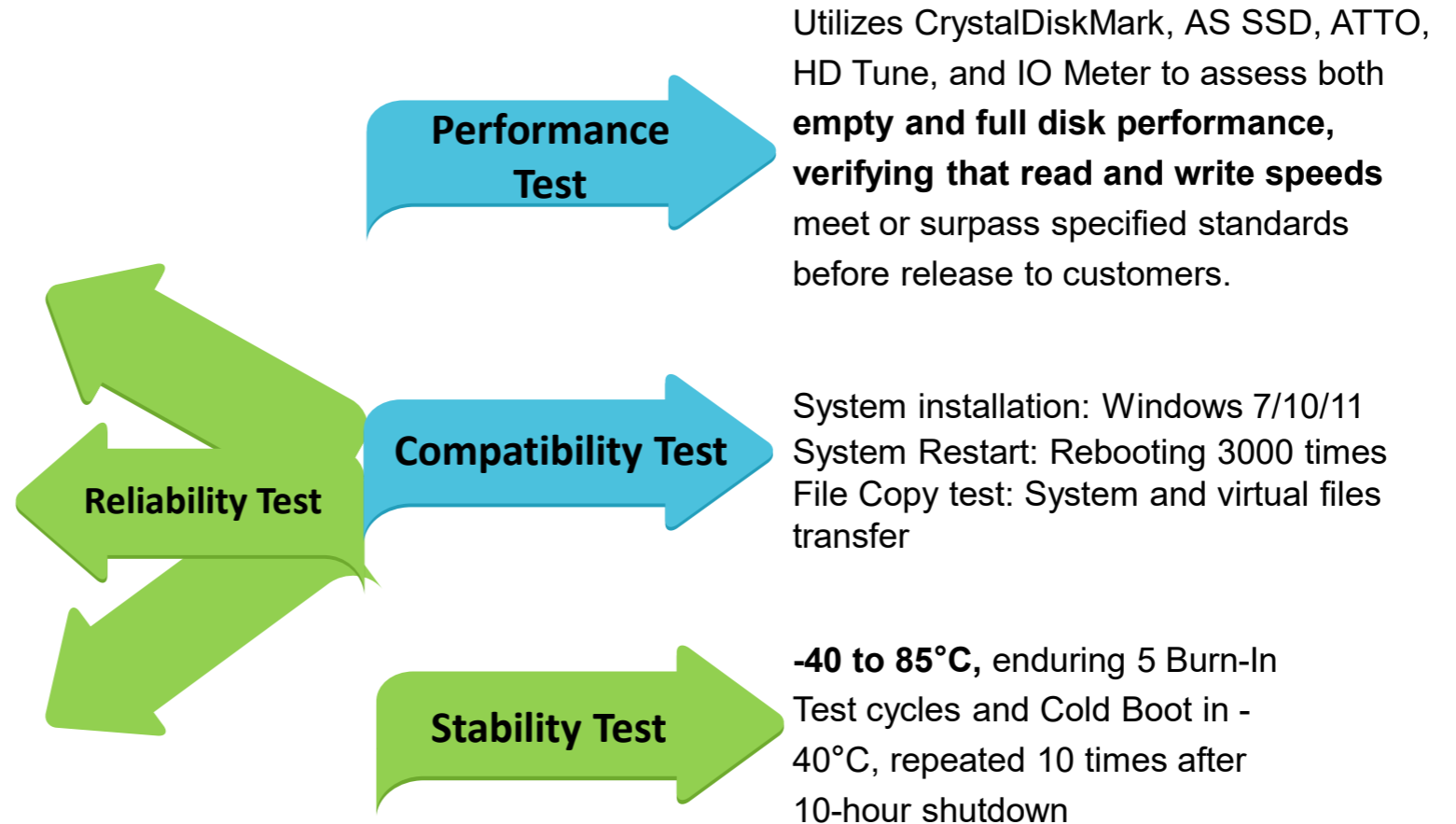


## Quality Assurance

**72-hour burn-in stress test** ensures SSD reliability and performance through performance evaluation, durability testing, firmware validation, and quality control.

A **full-disk write** comparison test ensures **data accuracy and integrity** during manufacturing, **preventing potential loss or corruption**

The disk undergoes **3000 power cycles**, simulating real-world scenarios, to ensure data integrity and proper operation during sudden power loss, validating its reliability and durability.



## Technologies

**Reliability**

- Hardware Power Loss Protection
- Conformal Coating
- Wide Temperature (85°C, -40°C)
- Thermal Sensor
- Anti-Vulcanization Technology
- Underfill

**Stability**

- External DRAM
- NCQ
- Power Assurance
- 3D NAND FLASH
- Cable-less Power

**Durability**

- PSLC
- Over-provisioning
- Bad Block Management
- Wear Leveling
- 30u PCB Edge Connector

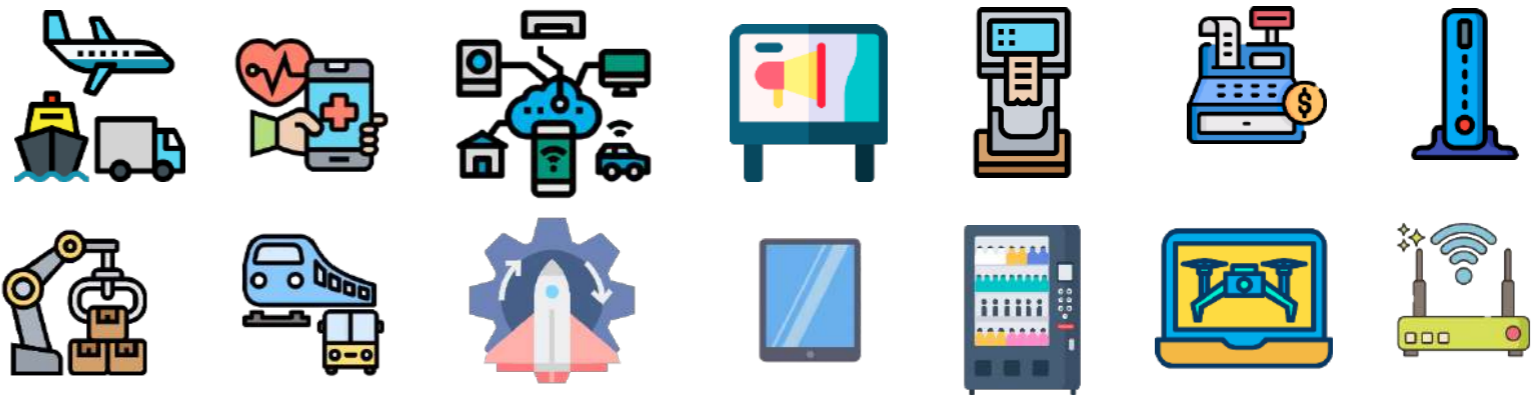
**Security**

- Write Protect
- AES Encryption
- Secure Erase
- One-Click delete
- Physical Destruction



# Application

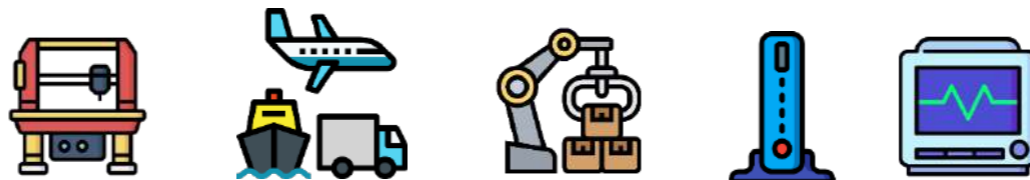
SATA SSD  
NVMe SSD  
Cards



Enterprise SSD



Legacy SSD



# 03

## Why YANSEN

---

- Why choose YANSEN
- Exhibitions

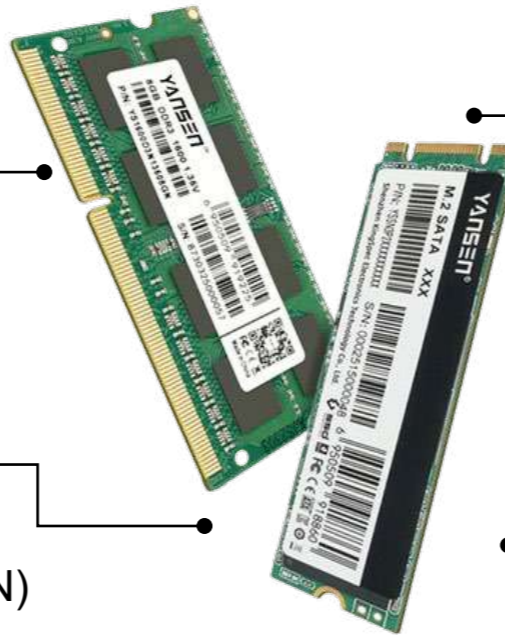
## Why YANSEN

### Technical Support:

- Compatibility In-house Testing
- Test Report Evaluation
- Remote Online Meeting Support
- 5 Year Warranty
- RMA Case Analysis

### Fixed BOM

- Locked BOM
- Stable Production
- Product Change Notice (PCN)
- End of Life Notice (EOL)



### Credit Support

- Internal credit support
- Sinosure credit support

### Worldwide Office with best service

- Japan Branch
- Europe After-sale Service Center
- Cross-World Sales Team

Exhibitions



# 04

## Case Study

---

- Product application cases
- Partners

## Case Study Digital Signage & Kiosk

### Client Background

Nano Vo is a leading provider of digital signage and kiosk solutions for multiple industries. They are experiencing compatibility issues and poor customer service with their current supplier, having returned a large quantity of defective products without receiving a swift and proper resolution.

### YANSEN Solution

Put up a dedicated seminar group focused on tailored SSD and DDR solutions, ensuring optimal compatibility through in-house testing and adjustments.



## Case Study Industrial PC & Mini PC

### Client Background

YANLING Industrial Computer Technology is seeking a dependable supplier of solid-state drives (SSDs) offering diverse solutions tailored to various applications used on industrial PCs and Mini PCs. The ideal partner should be capable of providing locked bill of materials (BOM) support along with assurance of long-term product availability.

### YANSEN Solution

YANSEN Solution offers a comprehensive selection of solid-state drives (SSDs) with a wide range of controller and NAND selections. Our extensive product lineup provides clients with multiple options to suit their specific requirements and preferences.



## Case Study Thin client

### Client Background

Panache DigiLife is seeking uniquely shaped legacy SATA DOM products for a large batch of thin client computers. However, the price for this product is very high, and sourcing it within a limited time frame is challenging.

### YANSEN Solution

We offer locked BOM SATA DOM products at competitive prices, manufactured with our SMT lines. Delivery is guaranteed within 2 weeks.





## Partners



EMERSON



iWave  
Global



UNI SYSTEM  
PASSION FOR DISPLAYS



AEON



eet



BenQ



EXCELITAS  
TECHNOLOGIES



ASUS



国家电网公司  
STATE GRID  
CORPORATION OF CHINA



华北工控  
NORCO



深圳地铁  
SHENZHEN METRO



Great Wall  
品质铸就长城



NEC



TCL



Evoc



aihua  
TECHNOLOGY



中国电信  
CHINA TELECOM



Hisense



Potevio  
中国普天



HEDY® 七喜®



HAILAN  
— 海兰 —