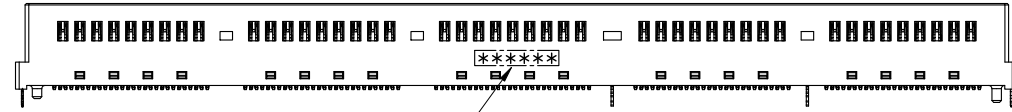
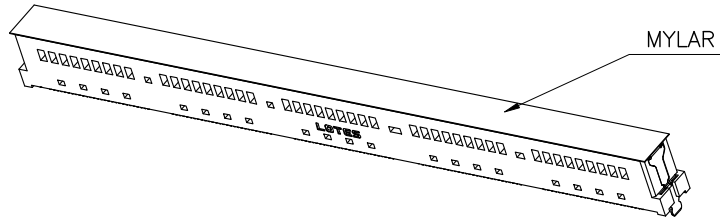


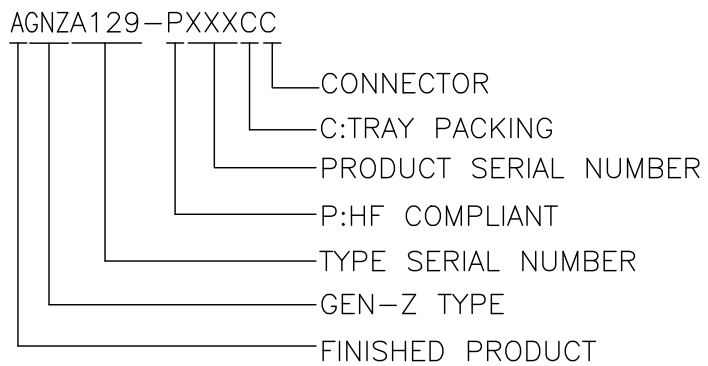
| REV. | ECN NO./DESCRIPTION | DATE |
|------|---------------------|----------|
| D | R200050 | 12/05'22 |
| E | R200050 | 12/30'22 |
| F | R200050 | 06/15'23 |

NOTES:

- MATERIAL SPECIFICATION:
 - HOUSING: LCP, UL94V-0, COLOR: BLACK.
 - MOLDING HOUSING: LCP, UL94V-0, COLOR: BLACK.
 - CONTACT: SPECIAL COPPER C7035 T=0.20MM.
 - KEY+HOOK: STAINLESS STEEL-SUS304 T=0.20MM.
 - MIDDLE HOOK: C2680
 - MYLAR: PI ; COLOR : BROWN
- SPECIFICATION:
 - CONTACT PLATING: Gold PLATING ON CONTACT AREA(SEE TABLE).
MATTE TIN 100u" MIN PLATING ON SOLDER AREA.
NICKEL 50u" MIN PLATING OVERALL.
 - KEY+HOOK & MIDDLE HOOK: NICKEL 50u" MIN PLATING
OVER ALL.MATTE TIN 100u" MIN PLATING ON SOLDER AREA.
- MECHANICAL PERFORMANCE:
 - MATING FORCE: 154 N Max.
 - UNMATING FORCE 14 N Min.
 - DURABILITY: 200 CYCLES.
- ELECTRICAL PERFORMANCE:
 - CURRENT RATING:
ALL PIN CURRENT : 1.1A
VOLTAGE RATING:29V
 - LLCR: : 30mΩ/PIN MAX.
LLCR MAX. CHANGE OF ALL PINS: 15mΩ.
 - INSULATION RESISTANCE: 1000MΩ MIN.
- RoHS/RoHS2.0 OR HF COMPLIANT
- ENVIRONMENTAL PERFORMANCE:
OPERATING TEMPERATURE: -55°C~+85°C.
- RECOMMENDED PROCESS:
THE PEAK TEMPERATURE ON THE BOARD SHALL
MAINTAIN 10±1 SECONDS AT 260±5°C.
- PACKAGING SPECIFICATION: PRODUCT SHALL BE
PACKED IN TRAY
- APPLICATION SPECIFICATION: TBA
- MATING CARD THICKNESS:1.57±0.13



11.PRODUCT NUMBER NOTE:



12.DATE CODE: *****

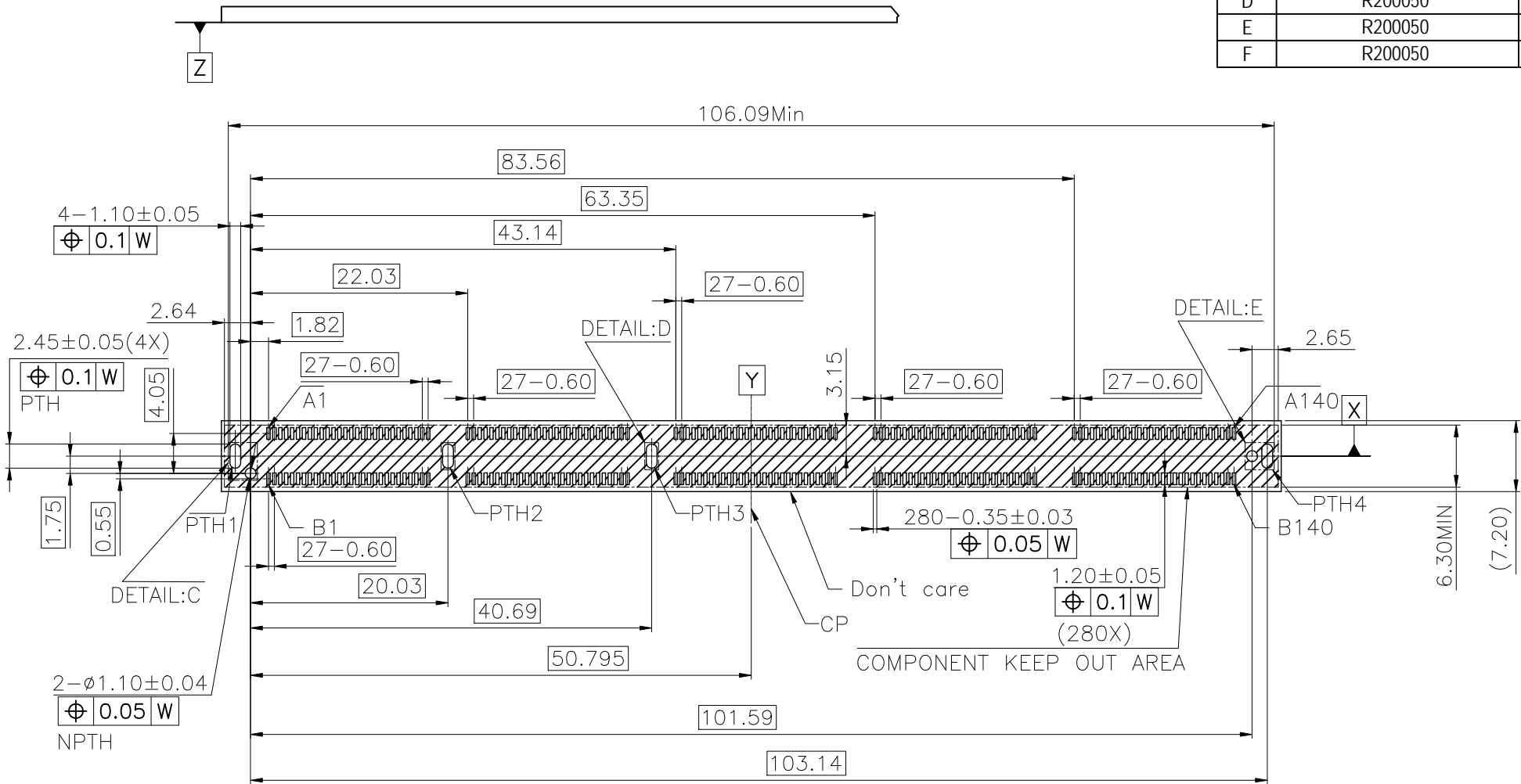


TABLE:

| No. | PART No. | CONTACT AREA PLATING | MYLAR |
|-----|-----------------|----------------------|-------|
| 1 | AGNZA129-P003CC | Au 30u" min | YES |

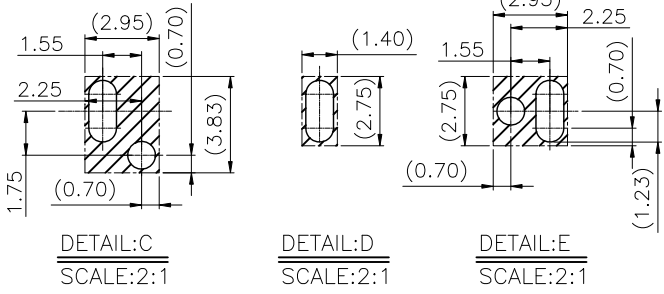
| GENERAL TOLERANCES UNLESS SPECIFIED | | PART NO. | LOTES | | |
|-------------------------------------|-------------------|-----------------------------|---------------------------------|----------------|--------------|
| .X ± 0.35 | X.° ± 3° | AGNZA129-P003CC | TITLE GENZ 8C VT_YH P5 CONN. | | |
| .XX ± 0.25 | .X° ± 2° | APPROVED BY Guoyou_He | DWG NO. GAP-AGNZA129-P003CC | | |
| .XXX ± 0.15 | .XX° ± 1° | CHECKED BY LingFeng_Zeng | DRAWN BY Kenny-shi | | |
| CUSTOMER DRAWING | | | | SHEET 2 / 5 | SCALE 5:3 |
| SIZE A4 | UNITS MM[INCH] | | | | REV F |

| REV. | ECN NO./DESCRIPTION | DATE |
|------|---------------------|----------|
| D | R200050 | 12/05'22 |
| E | R200050 | 12/30'22 |
| F | R200050 | 06/15'23 |



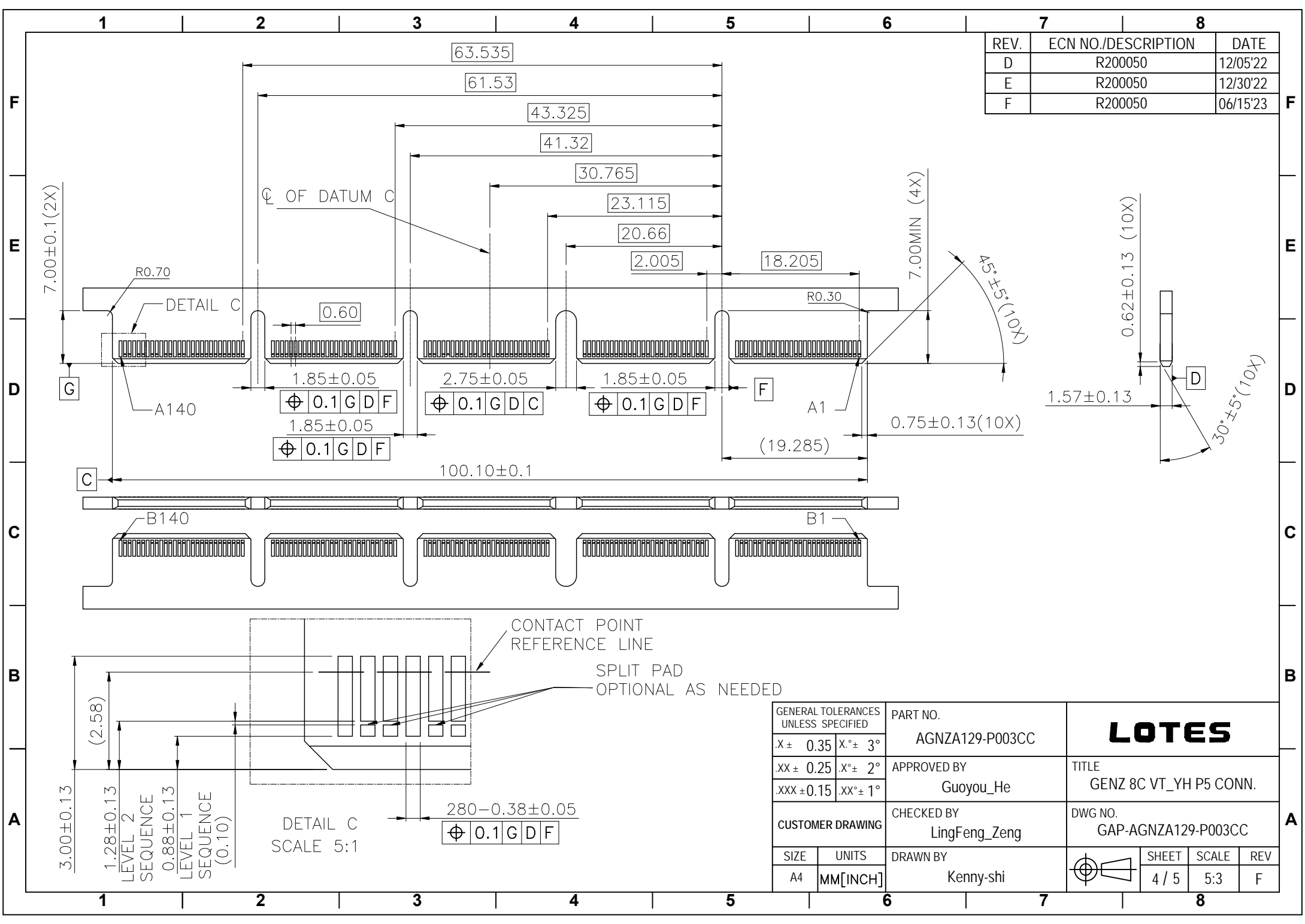
TOP VIEW

RECOMMENDED LAYOUT
TRACE KEEP OUT AREA



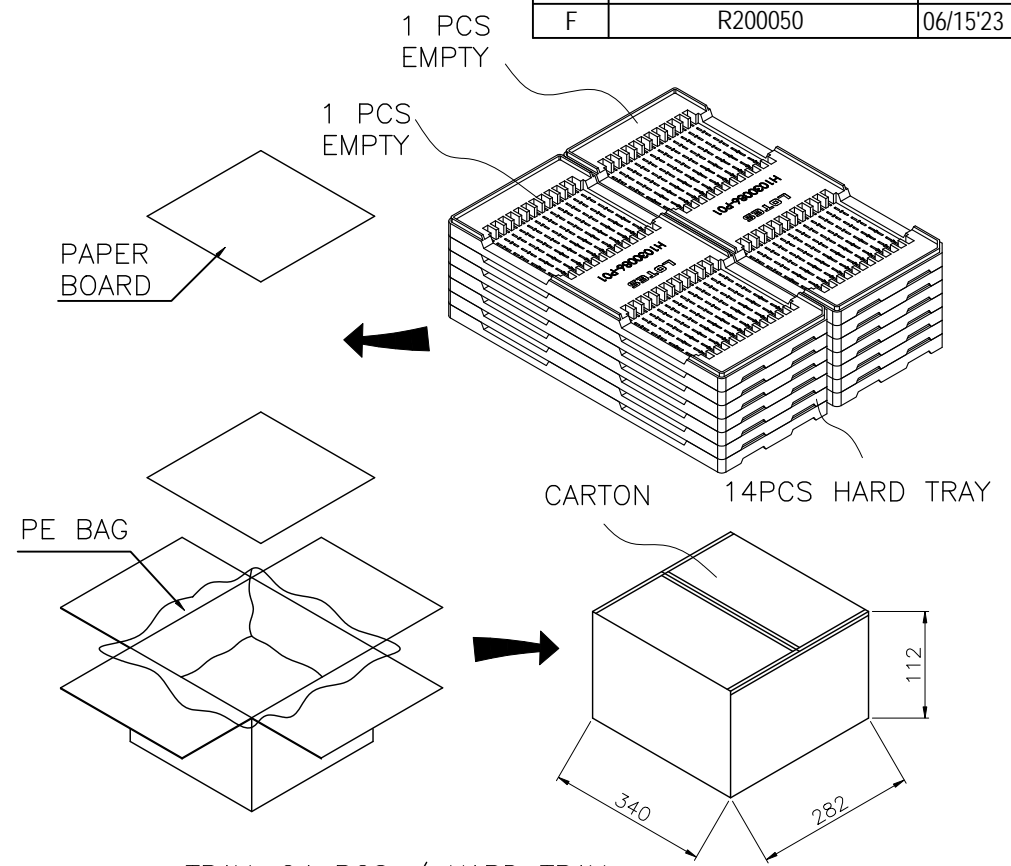
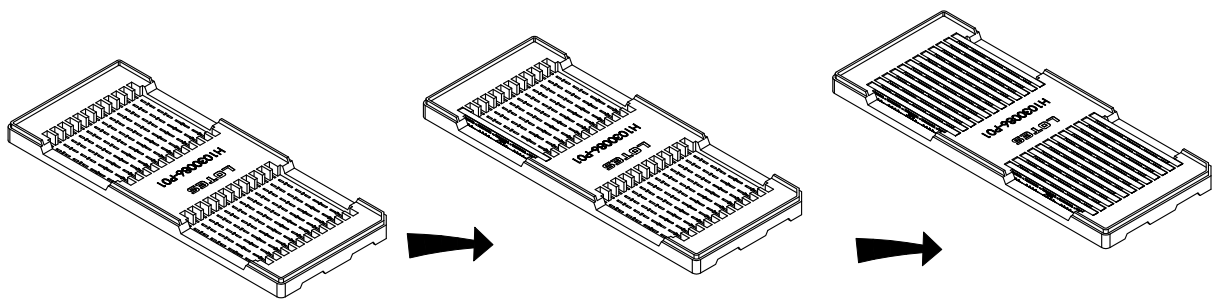
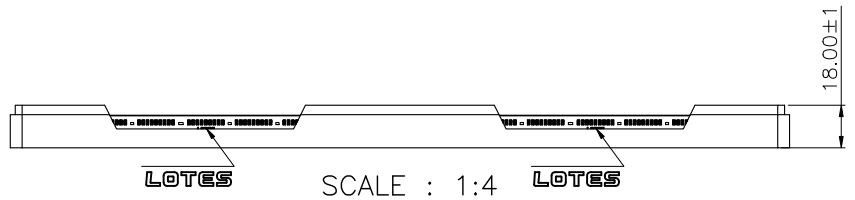
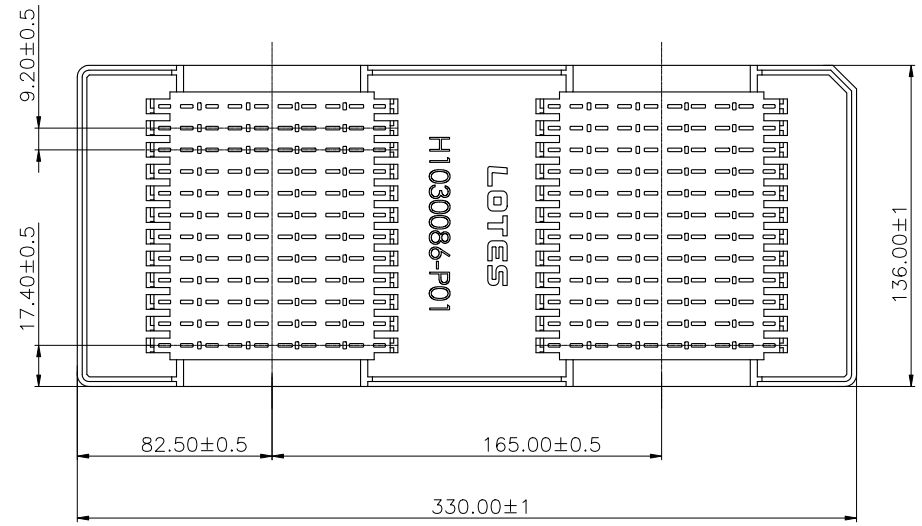
| | | | | | |
|-------------------------------------|-----------|-----------------|------------------------|-------|-----|
| GENERAL TOLERANCES UNLESS SPECIFIED | | PART NO. | LOTES | | |
| .X ± 0.35 | X.° ± 3° | AGNZA129-P003CC | | | |
| .XX ± 0.25 | X.° ± 2° | APPROVED BY | TITLE | | |
| .XXX ± 0.15 | .XX° ± 1° | Guoyou_He | GENZ 8C VT_YH P5 CONN. | | |
| CUSTOMER DRAWING | | CHECKED BY | DWG NO. | | |
| | | LingFeng_Zeng | GAP-AGNZA129-P003CC | | |
| SIZE | UNITS | DRAWN BY | SHEET | SCALE | REV |
| A4 | MM[INCH] | Kenny-shi | | | |
| | | | 3 / 5 | 5:3 | F |

| REV. | ECN NO./DESCRIPTION | DATE |
|------|---------------------|----------|
| D | R200050 | 12/05'22 |
| E | R200050 | 12/30'22 |
| F | R200050 | 06/15'23 |



| GENERAL TOLERANCES UNLESS SPECIFIED | | PART NO. | LOTES | | |
|-------------------------------------|--------------------|-----------------------------|---------------------------------|----------|--|
| .X ± 0.35 | X.° ± 3° | AGNZA129-P003CC | TITLE GENZ 8C VT_YH P5 CONN. | | |
| .XX ± 0.25 | X.° ± 2° | APPROVED BY Guoyou_He | DWG NO. GAP-AGNZA129-P003CC | | |
| .XXX ± 0.15 | .XX.° ± 1° | CHECKED BY LingFeng_Zeng | SHEET 4 / 5 | | |
| CUSTOMER DRAWING | | DRAWN BY Kenny-shi | SCALE 5:3 | REV F | |
| SIZE A4 | UNITS MM [INCH] | | | | |

| REV. | ECN NO./DESCRIPTION | DATE |
|------|---------------------|----------|
| D | R200050 | 12/05'22 |
| E | R200050 | 12/30'22 |
| F | R200050 | 06/15'23 |



TRAY: 24 PCS / HARD TRAY
 CARTON: 14 HARD TRAY / CATRON (2PCS EMPTY)
 CARTON: 12 HARD TRAY/CATRON*24PCS/HARD TRAY
 =288PCS/CARTON

| | | | | | |
|-------------------------------------|-----------|-----------------|------------------------|-------|-----|
| GENERAL TOLERANCES UNLESS SPECIFIED | | PART NO. | LOTES | | |
| .X ± 0.35 | X.° ± 3° | AGNZA129-P003CC | | | |
| .XX ± 0.25 | X.° ± 2° | APPROVED BY | TITLE | | |
| .XXX ± 0.15 | .XX° ± 1° | Guoyou_He | GENZ 8C VT_YH P5 CONN. | | |
| CUSTOMER DRAWING | | CHECKED BY | DWG NO. | | |
| | | LingFeng_Zeng | GAP-AGNZA129-P003CC | | |
| SIZE | UNITS | DRAWN BY | | | |
| A4 | MM[INCH] | Kenny-shi | | | |
| | | | SHEET | SCALE | REV |
| | | | 5 / 5 | 5:4 | F |