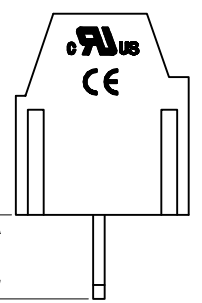
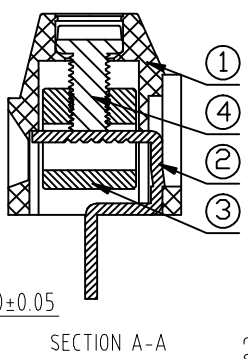
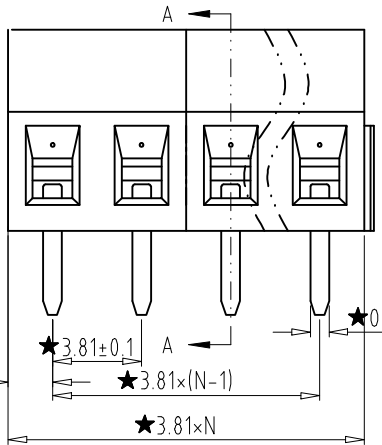
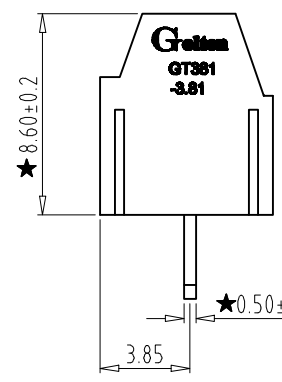
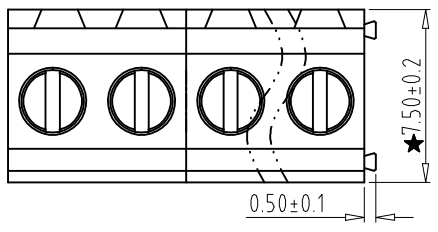
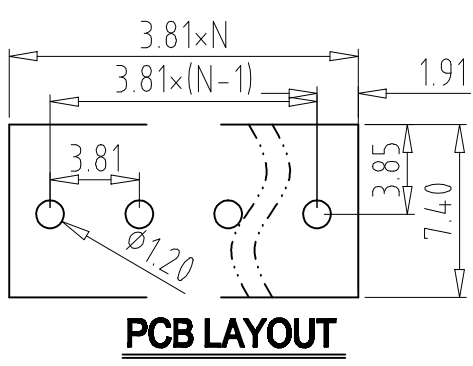


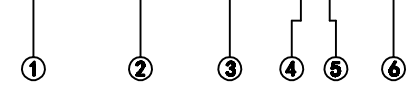
REV	CONTENT	CHK	DATE
V0.0	CONTENT	LZW	23.04.15



**Electrical :**

- |   |                |                        |
|---|----------------|------------------------|
|   | UL             | IEC                    |
| 1. Rated Voltage :                        | 300V           | 130V                   |
| 2. Rated Current :                        | 10A            | 10A                    |
| 3. Torque Value :                         | M2 , 1.77Lb.in | M2 , 0.2N.m            |
| 4. Wire Range :                           | 26-16AWG       | 0.5-1.3mm <sup>2</sup> |
| 5. Stripping Length :                     | 4-5mm          |                        |
| 6. Withstanding Voltage :                 | AC1250V/1Min.  |                        |
| 7. Operating Temperature :                | -40 °C~+105°C  |                        |
| 8. RoHS Compliance                        |                |                        |
| 9. Safty Approval :                       | UL CE          |                        |
| 10. "★" Is the key quality control point. |                |                        |

**GT381 - 3.81 - XXP - X X - 00**



- ① Series No.
  - ② Pitch
  - ③ Poles
  - ④ 1 Single Pitch  
2 Double Pitch
  - ⑤ Color:
  - ⑥ Customer Request : 00-Standard
- |               |
|---------------|
| 1 Grey        |
| 2 Blue        |
| 3 Black       |
| 4 Green       |
| 5 Orange      |
| 6 Red         |
| 7 Transparent |
| 8 Yellow      |
| 9 White       |

4	SCREW	XX	N	STEEL	Zn Plated
3	BLOCK	XX	N	BRASS	Ni Plated
2	Pin Header	XX	N	BRASS	Tin Plated
1	HOUSING	XX	1	PA66 UL94V-0	SEE NOTE
ITEM	NAME OF PART	NO. OF PART	Q'TY	MATERIAL	NOTE
DWG.	LZW	DATE	23.04.15	SIZE	A4 UNITS mm SHEET/OF 1/1
CHK.	DATE			SCALE	1:1
APP.	DATE			NAME	<b>GT381-3.81-XXP-XX-00</b>
				DWGNO.	XXXX

Total Pitch Tolerances in mm										Nominal dimension range in mm										⊥		≡		—		//	
over 0	over 30	over 53	over 70	over 90	over 115	over 150	over 250	over 350	over 500	over 0	over 30	over 53	over 70	over 90	over 115	over 150	over 200	over 250	over 320	over 0	over 10	all	over 0	over 100	over 0	over 150	
±0.18	±0.20	±0.25	±0.3	±0.35	±0.44	±0.60	±0.70	±0.85	±0.20	±0.25	±0.30	±0.35	±0.44	±0.55	±0.70	±0.80	±0.90	0.2	0.3	0.3	0.2	0.3	0.5				