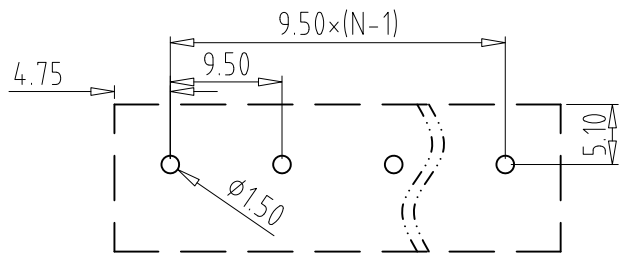


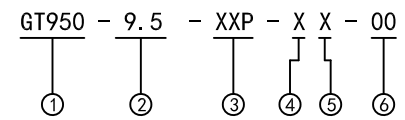
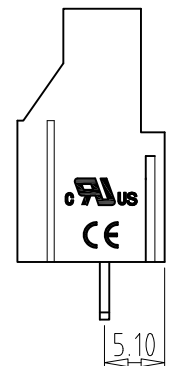
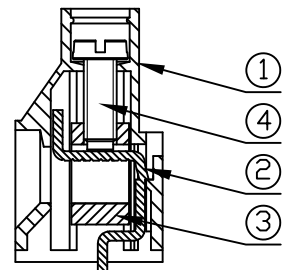
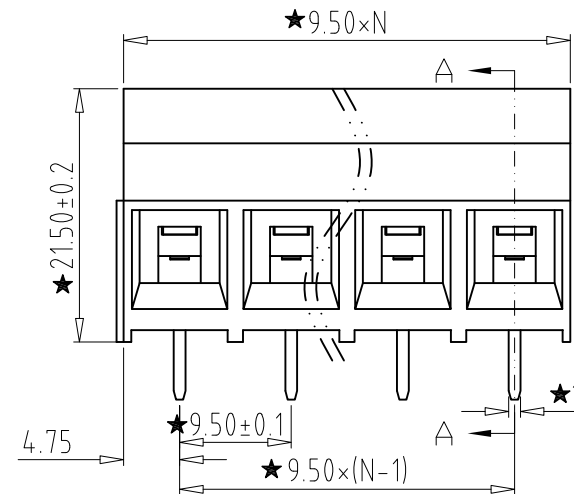
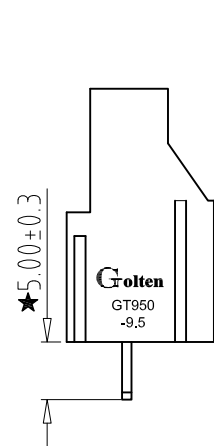
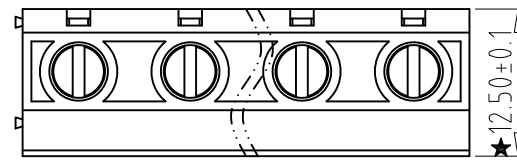
REV	CONTENT	CHK	DATE
V0.0	CONTENT	MYZ	21.07.01



**PCB LAYOUT**

**Electrical :**

- |   |                |                        |
|---|----------------|------------------------|
|   | UL             | IEC                    |
| 1. Rated Voltage :                        | 300V           | 750V                   |
| 2. Rated Current :                        | 30A            | 26A                    |
| 3. Torque Value :                         | M3 , 4.43Lb.in | M3 , 0.5N.m            |
| 4. Wire Range:                            | 26-10AWG       | 1.5-4.0mm <sup>2</sup> |
| 5. Stripping Length :                     | 8-9mm          |                        |
| 6. Withstanding Voltage :                 | AC3000V/1Min.  |                        |
| 7. Operating Temperature :                | -40°C~+105°C   |                        |
| 8. RoHS Compliance                        |                |                        |
| 9. Safty Approval :                       | cRUlus CE      |                        |
| 10. "★" is the key quality control point. |                |                        |



- ① Series No.
- ② Pitch
- ③ Poles  
02 02Contacts  
03 03Contacts  
...  
24 24Contacts
- ④ 1 Single Pitch  
2 Double Pitch
- ⑤ Color: 1 Grey  
2 Blue  
3 Black  
4 Green  
5 Orange  
6 Red  
7 Transparent  
8 Yellow  
9 White
- ⑥ Customer Request : 00—Standard

**SECTION A-A**

4	SCREW	XX	1	STEEL	Zn Plated
3	BLOCK	XX	1	BRASS	Ni Plated
2	PIN	XX	1	BRASS	Tin Plated
1	HOUSING	XX	1	PA66 UL94V-0	SEE NOTE

Total Pitch Tolerances in mm										Nominal dimension range in mm										⊥	≡	-	//		
over 0	over 30	over 53	over 70	over 90	over 115	over 150	over 250	over 350	over 500	over 0	over 30	over 53	over 70	over 90	over 115	over 150	over 200	over 250	over 320	0	over 10	all	over 0	over 100	over 150
±0.18	±0.20	±0.25	±0.3	±0.35	±0.4	±0.60	±0.70	±0.85	±0.20	±0.25	±0.30	±0.35	±0.4	±0.55	±0.70	±0.80	±0.90	0.2	0.3	0.3	0.2	0.3	0.5		

ITEM	NAME OF PART	NO. OF PART	Q'TY	MATERIAL	NOTE
DWG.	MYZ	DATE	21.07.01	SIZE	A4 UNITS mm SHEET/OF 1/1
CHK.		DATE		SCALE	1:1
APP.		DATE			
NAME			GT950-9.5-XXP-XX-00		
DWGNO.			XXXX		

**Grolten** 宁波冠泰电子有限公司  
NINGBO GOLTEN ELECTRONICS CO., LTD.