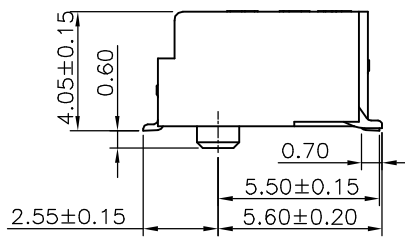
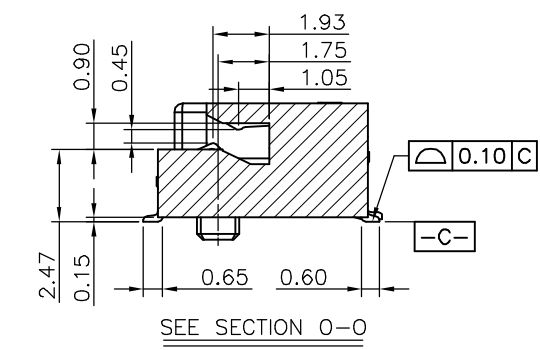
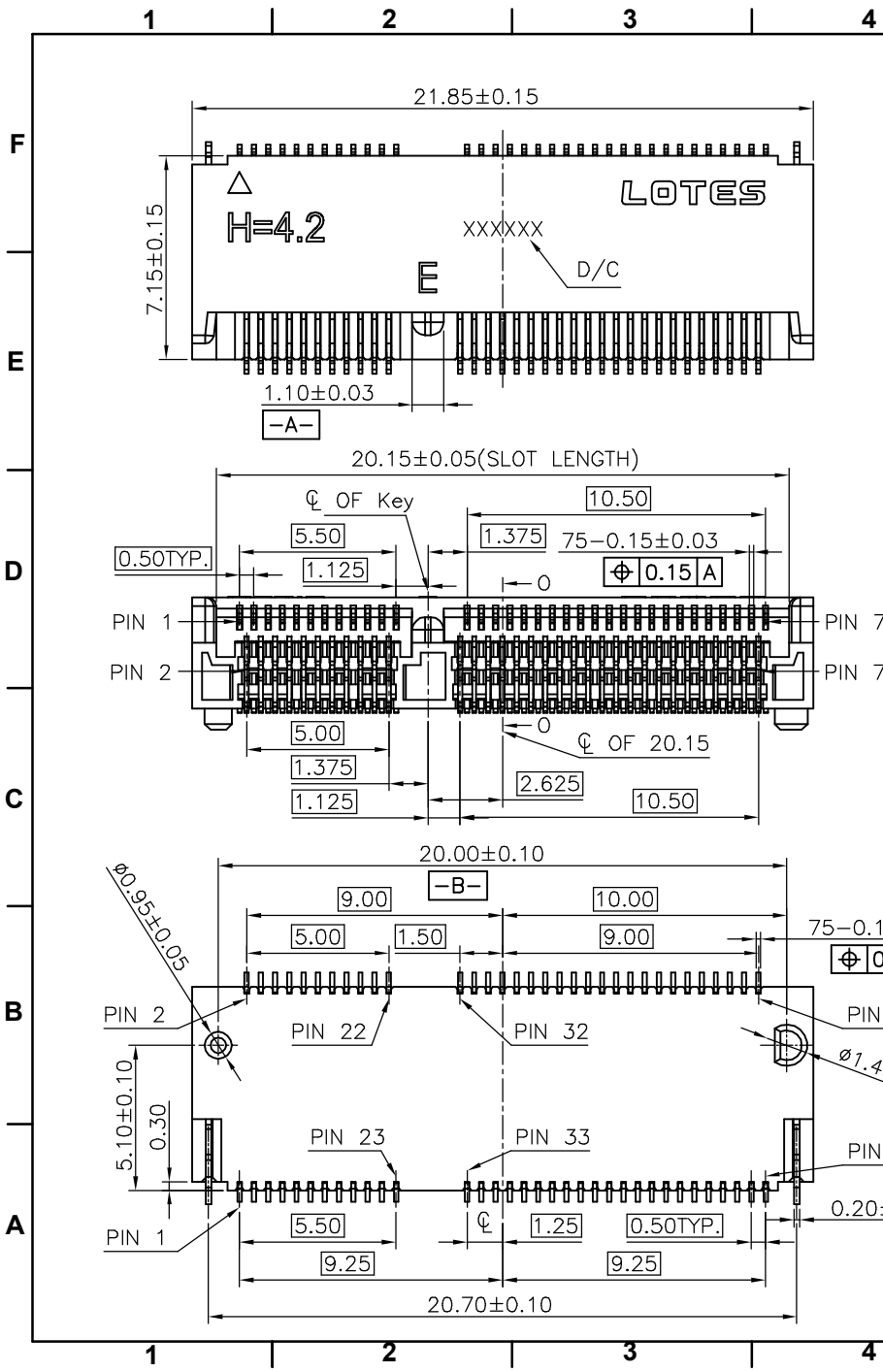


REV.	ECR/N NO./DESCRIPTION	DATE	DRAWN	CHECKED	APPROVE
1	SN22026	04/20'22	Nan.Zhou	Vito	Herch



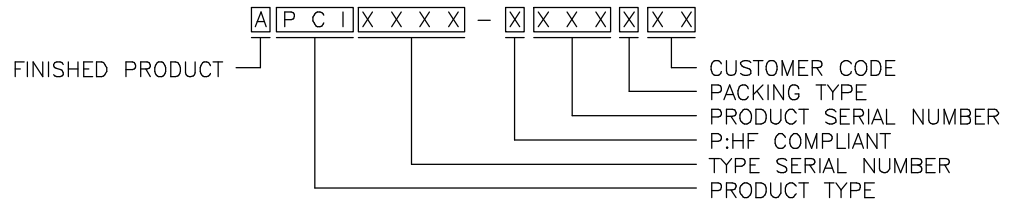
GENERAL TOLERANCES UNLESS SPECIFIED		PART NO. SEE TABLE	LOTES			
X ± 0.35	X° ± 3°					
XX ± 0.25	X° ± 2°	APPROVED BY Frank	TITLE 0.5 PITCH M.2 H4.2 (KEY E)			
XXX ± 0.15	.XX° ± 1°	CHECKED BY Vito	DWG NO. AP-APCI0360			
CUSTOMER DRAWING		DRAWN BY Terry		SHEET	SCALE	REV
SIZE A4	UNITS MM [INCH]			1 / 5	4:1	1

TABLE:

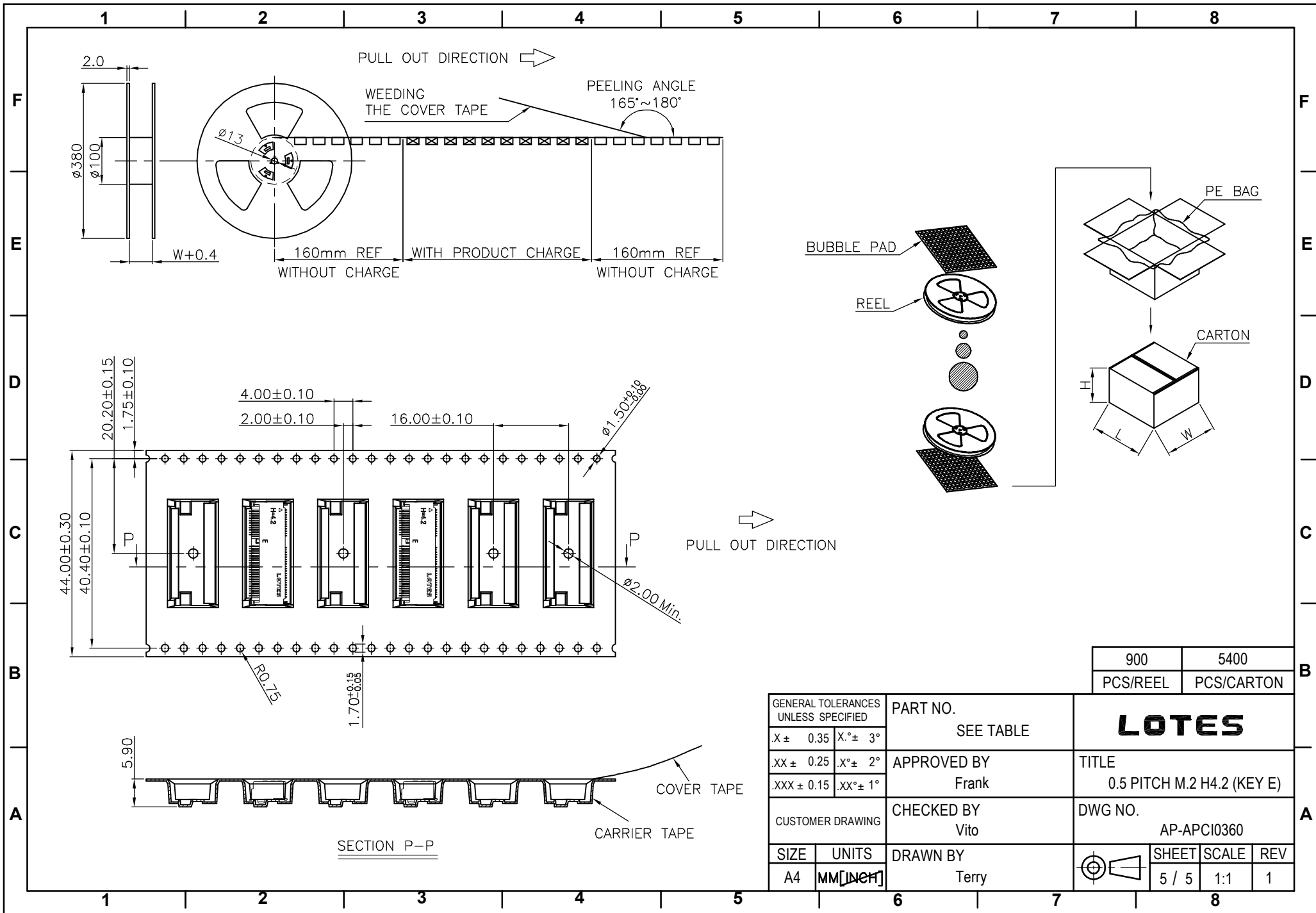
NO.	PART NO.	DESCRIPTION	DURABILITY
1	APCI0360-P001A	GOLD G/F ON CONTACT AREA	25 CYCLES
		GOLD G/F ON SOLDER AREA	
2	APCI0360-P002A	GOLD 10u" ON CONTACT AREA	25 CYCLES
		GOLD G/F ON SOLDER AREA	
3	APCI0360-P003A	GOLD 15u" ON CONTACT AREA	25 CYCLES
		GOLD G/F ON SOLDER AREA	
4	APCI0360-P004A	GOLD 30u" ON CONTACT AREA	60 CYCLES
		GOLD G/F ON SOLDER AREA	

Notes:

1. MATERIAL SPECIFICATION:
 - 1.1. HOUSING:LCP+40%GF,UL94V-0,COLOR:BLACK.
 - 1.2. CONTACT:COPPER ALLOY.
 - 1.3. PEG:STEEL.
2. PLATING SPECIFICATION:
 - 2.1. CONTACT:50u" MIN.NICKEL UNDER PLATING OVER ALL.PLATING ON SOLDER AREA:SEE TABLE GOLD PLATING ON CONTACT AREA:SEE TABLE
 - 2.2. PEG:50u" MIN. NICKEL UNDER PLATING OVER ALL. 80u" MIN. MATTE TIN PLATING ON SOLDER AREA.
3. HF COMPLIANT, RoHS COMPLIANT.
4. DATE CODE: XX XX XX
 DAY
 WEEK
 YEAR
5. MECHANICAL PERFORMANCE:
 - 5.1. DURABILITY: SEE TABLE
6. ELECTRICAL PERFORMANCE:
 - 6.1. CURRENT: 0.5A PER PIN.
 - 6.2. LLCR: INITIAL 55mΩ MAX.;FINAL ΔLLCR=20mΩ MAX.
7. IR REFLOW:
 THE TEMPERATURE SHALL BE 260±5°C MAINTAINING 10±1 SECONDS.
8. PRODUCT NUMBER NOTE:



GENERAL TOLERANCES UNLESS SPECIFIED		PART NO.	LOTES			
X ± 0.35	X° ± 3°	SEE TABLE				
XX ± 0.25	X° ± 2°	APPROVED BY	TITLE 0.5 PITCH M.2 H4.2 (KEY E)			
XXX ± 0.15	XX° ± 1°	Frank				
CUSTOMER DRAWING		CHECKED BY	DWG NO. AP-APCI0360			
		Vito				
SIZE	UNITS	DRAWN BY		SHEET	SCALE	REV
A4	MM[INCH]	Terry		2 / 5	4:1	1



900	5400
PCS/REEL	PCS/CARTON

GENERAL TOLERANCES UNLESS SPECIFIED		PART NO. SEE TABLE	LOTES			
$X \pm 0.35$	$X^\circ \pm 3^\circ$					
$.XX \pm 0.25$	$X^\circ \pm 2^\circ$		APPROVED BY Frank	TITLE 0.5 PITCH M.2 H4.2 (KEY E)		
$.XXX \pm 0.15$	$.XX^\circ \pm 1^\circ$	CHECKED BY Vito	DWG NO. AP-APCI0360			
SIZE A4	UNITS MM [INCH]	DRAWN BY Terry		SHEET 5 / 5	SCALE 1:1	REV 1