

---

# Radxa CM3 IO Board

an Application Board for Radxa CM3

Revision 0.8

2022-09-01



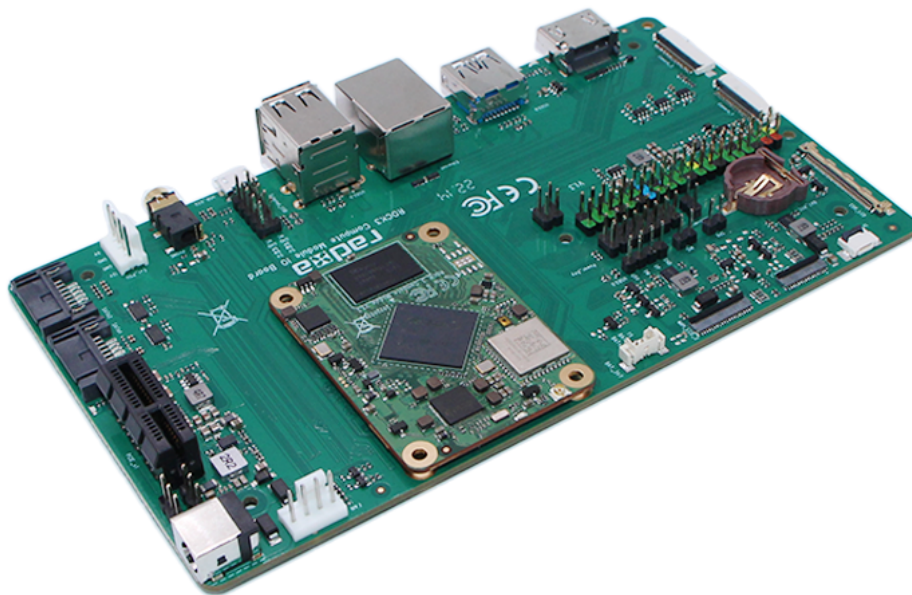
## Contents

1	Introduction	2
2	Interface Overview	2
3	Mechanical Specification	4
4	Availability	5
5	Support	5

## 1 Introduction

Radxa CM3 IO Board is a cost-effective, high-performance, interface-rich application board for Radxa CM3, providing SD card slot, SATA interface, PCIe, HDMI, MIPI, Ethernet, TP interface, eDP screen, USB3.0, USB2.0, RTC, CSI, GPIO, headphone jack, fan and other rich peripheral interfaces.

Dimensions: 160mm × 90mm

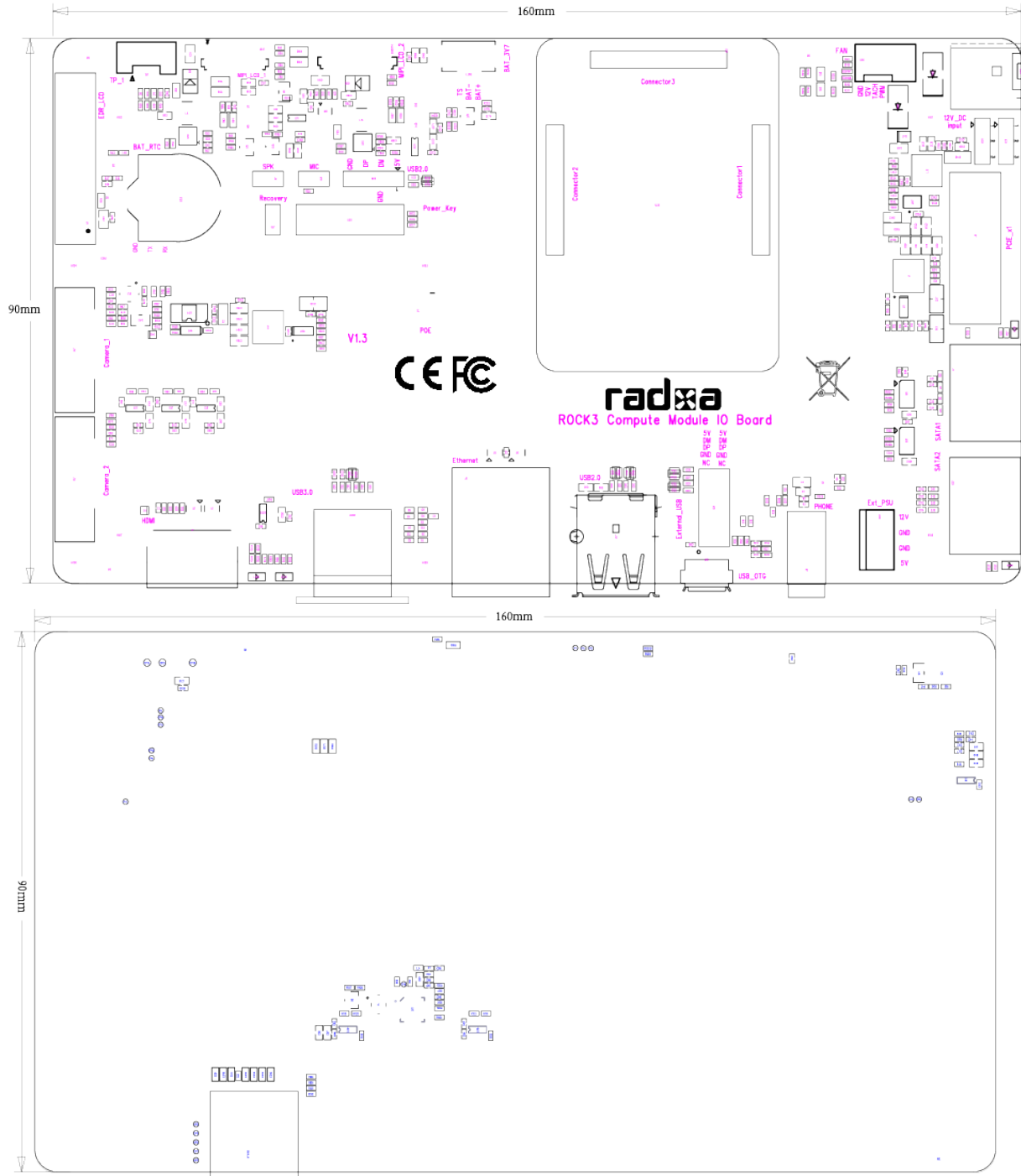


## 2 Interface Overview

- 1 x DC 12V power
- 1 x HDMI
- 1 x USB 3.0
- 1 x Gigabit Ethernet
- 2 x USB 2.0
- 1 x USB Micro-B OTG
- 1 x Headphone Jack
- 2 x SATA
- 1 x PCI Express

- 2 x MIPI
- 1 x TP
- 1 x RTC
- 1 x EDP
- 2 x CSI
- 1 x 4 Pin Fan Header
- 1 x 40 Pin GPIO
- 1 x 2 Pin Speaker
- 1 x 2 Pin Microphone
- 1 x 4 Pin USB 2.0
- 1 x 2 Pin Recovery
- 1 x 14 Pin Power key
- 1 x 4 Pin POE Header
- 1 x 10 Pin External USB
- 1 x 4 Pin Power Supply Unit
- 1 x 3 Pin Battery

### 3 Mechanical Specification



### 4 Availability

Radxa guarantees availability of the Radxa CM3 IO Board until at least September 2029.

### 5 Support

For support please see the hardware documentation section of the [Radxa Wiki](#) website and post questions to the [Radxa forum](#).

