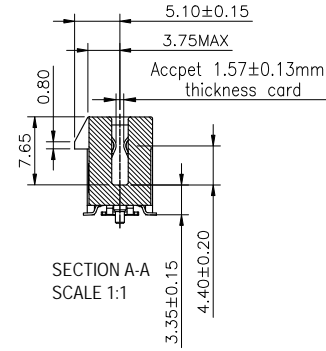
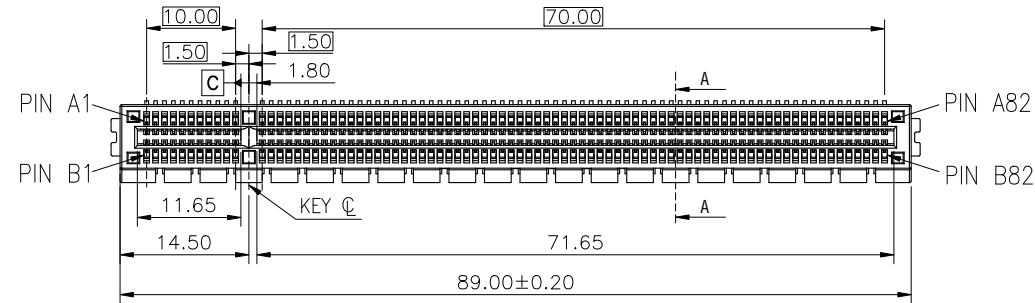
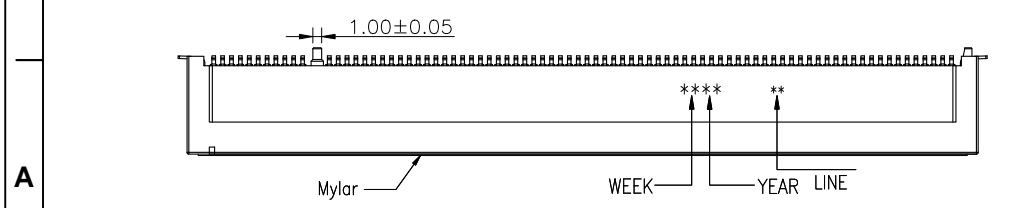
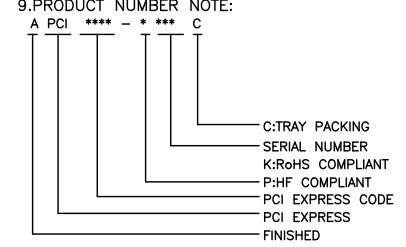
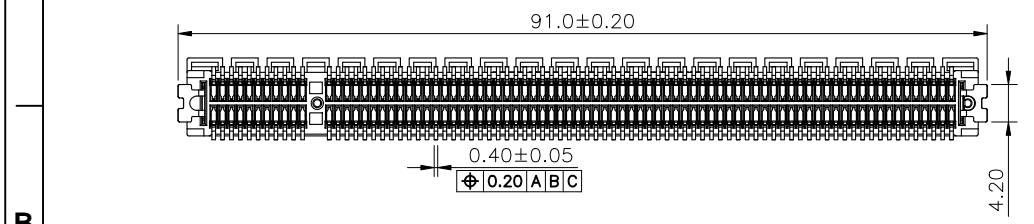
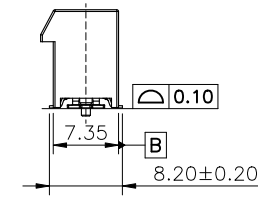
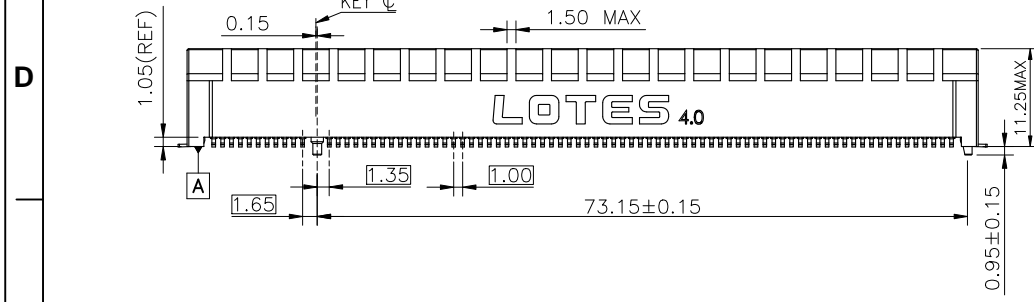


REV.	ECN NO./DESCRIPTION	DATE
E	R170324	02/26"21
F	NDR210056	10/19"21
G	NDR210056	10/26"22



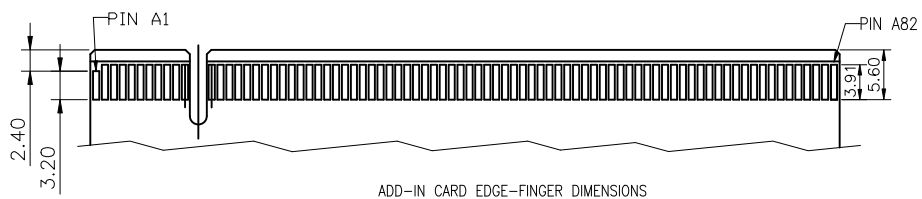
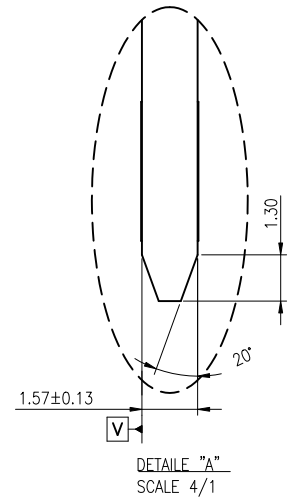
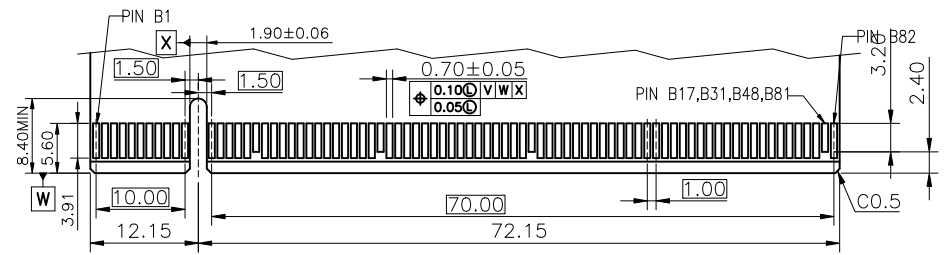
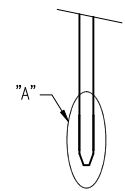
NOTES:

- MATERIAL:
HOUSING:HIGH TEMPERATURE THERMOPLASTIC(SEE TABLE)
TERMINAL: PHOSPHOR BRONZE C5191;
HOOK: S50C
- FINISH:
TERMINAL: 50u" Ni PLATING OVER ALL;
100u" MATTE Sn PLATING ON SOLDER TAIL;
GOLD PLATING ON CONTACT AREA.(SEE TABLE)
HOOK: Ni 50u" MIN. UNDERPLATED OVER ALL.
MATTE Sn 100u" MIN. PLATED ON SOLDER AREA.
- MECHANICAL SPEC:
DURABILITY : 50 MATING CYCLES.
RETENTION FORCE : 0.40 kgf MIN PER PIN.
MATING FORCE : 1.15N MAX PER PAIR.
UNMATING FORCE : 0.15N MIN PER PAIR.
- ELECTRICAL SPEC:
CURRENT RATING: 1.1A.
CONTACT RESISTANCE: 30 MILLIOHMS MAX. INITIAL.
INSULATION RESISTANCE: 1000 MEGOHMS MIN.
DIELECTRIC WITHSTANDING VOLTAGE: 500V AC MIN.
- IR REFLOW:
THE TERMPERATURE SHALL BE 260+/-5°C MAINTAINING 10+/-1 SECONDS
- RoHS COMPLIANT OR HALOGEN FREE COMPLIANT.
- RECOMMENDED STENCIL THICKNESS: 0.18mm.
- STORAGE ENVIRONMENT FOR CONNECTOR:
THE MATERIALS SHOULD BE USED IN 72 HOURS AFTER OPENING THE PACKAGE IF NOT USED UP PLEASE RESEAL AGAIN.IF NOT RESEAL ON TIME,PLEASE BAKE 100C/4H BEFORE USE.
- PRODUCT NUMBER NOTE:

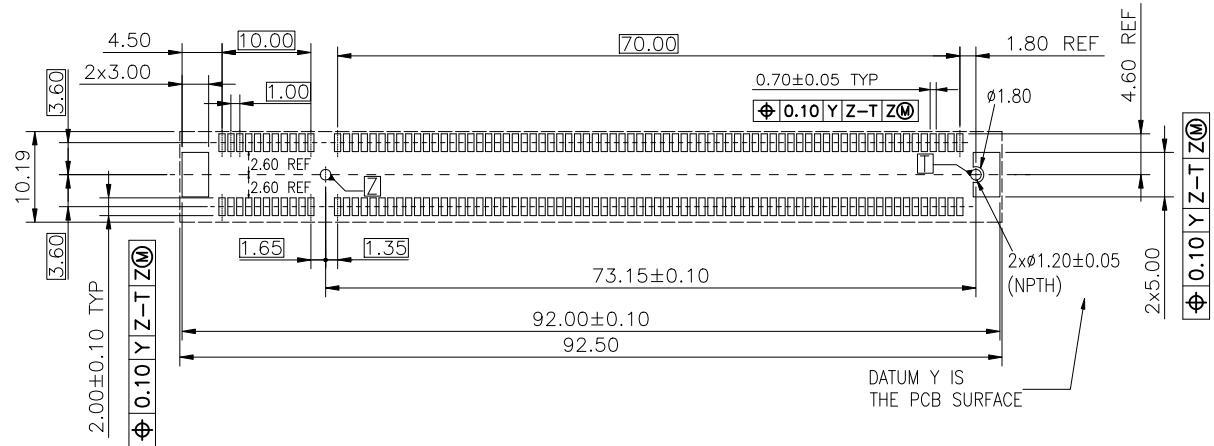


GENERAL TOLERANCES UNLESS SPECIFIED		PART NO. SEE TABLE	LOTES					
.X ± 0.35	X° ± 3°					APPROVED BY Mark 10/26"22	TITLE 164P PCI EXPRESS 4.0 SMT CONNECTOR TYPE	
.XX ± 0.25	X° ± 2°							
.XXX ± 0.15	.XX° ± 1°	CHECKED BY Yao 10/26"22	DWG NO. GAP-APCI0470					
CUSTOMER DRAWING		DRAWN BY XUZONG 10/26"22	SHEET 1 / 3	SCALE 1:1	REV G			
SIZE A4	UNITS MM[INCH]							

REV.	ECN NO./DESCRIPTION	DATE
E	R170324	02/26"21
F	NDR210056	10/19"21
G	NDR210056	10/26"22



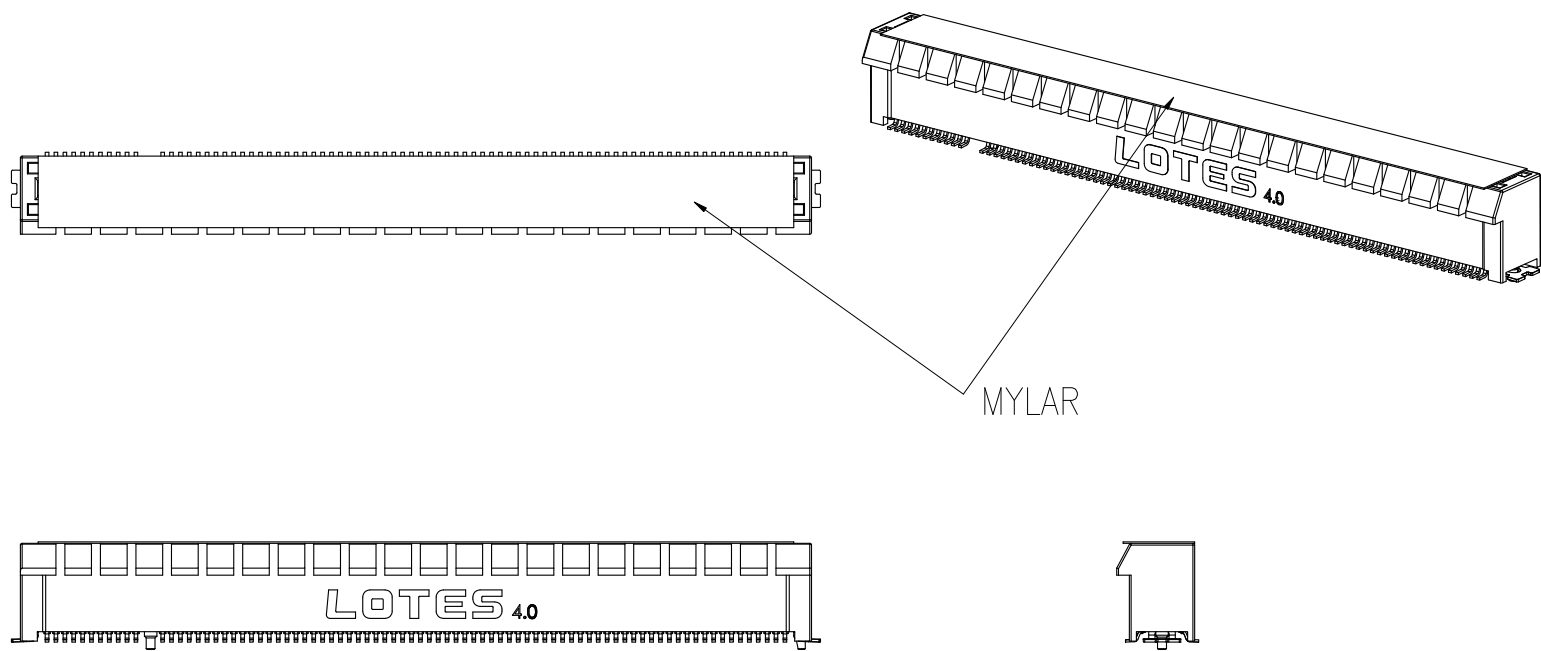
ADD-IN CARD EDGE-FINGER DIMENSIONS
DEFAULT TOLERANCE ±0.05



RECOMMENDED FOOTPRINT(TOP VIEW)
DEFAULT TOLERANCE ±0.05

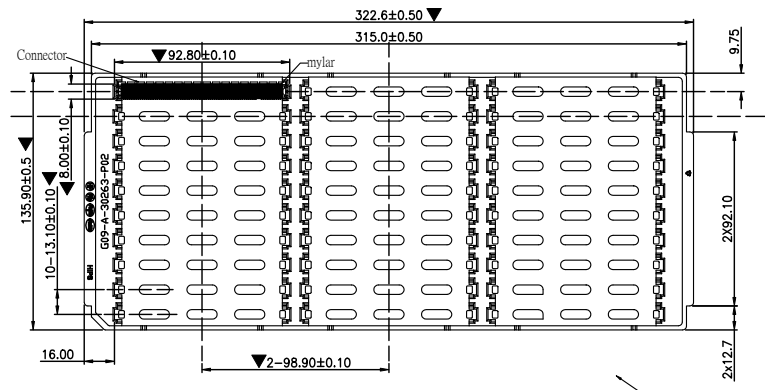
GENERAL TOLERANCES UNLESS SPECIFIED		PART NO. SEE TABLE	LOTES
.X ± 0.35	X° ± 3°		
.XX ± 0.25	X° ± 2°	APPROVED BY Mark 10/26"22	TITLE 164P PCI EXPRESS 4.0 SMT CONNECTOR TYPE
.XXX ± 0.15	.XX° ± 1°	CHECKED BY Yao 10/26"22	DWG NO. GAP-APCI0470
SIZE A4	UNITS MM[INCH]	DRAWN BY XUZONG 10/26"22	SHEET 2 / 3
			SCALE 1:1
			REV G

REV.	ECN NO./DESCRIPTION	DATE
E	R170324	02/26"21
F	NDR210056	10/19"21
G	NDR210056	10/26"22



GENERAL TOLERANCES UNLESS SPECIFIED		PART NO.	LOTES		
.X ± 0.35	X.° ± 3°	SEE TABLE			
.XX ± 0.25	.X.° ± 2°	APPROVED BY	TITLE 164P PCI EXPRESS 4.0 SMT CONNECTOR TYPE		
.XXX ± 0.15	.XX.° ± 1°	Mark 10/26"22			
CUSTOMER DRAWING		CHECKED BY	DWG NO. GAP-APCI0470		
		Yao 10/26"22			
SIZE	UNITS	DRAWN BY	SHEET	SCALE	REV
A4	MM[INCH]	XUZONG 10/26"22			

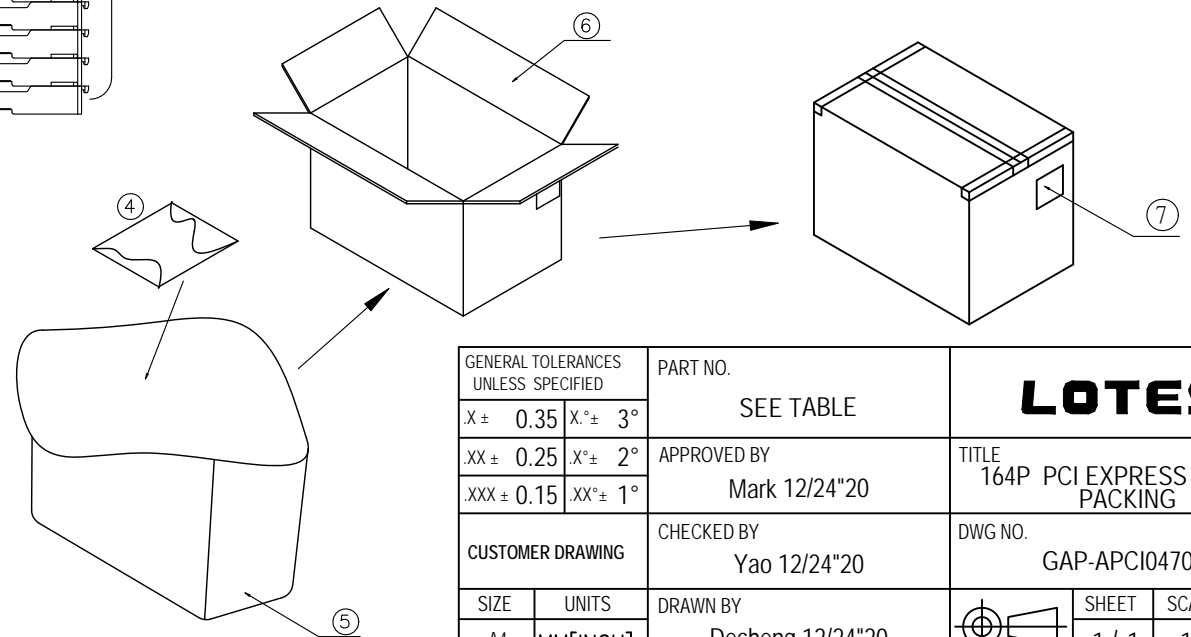
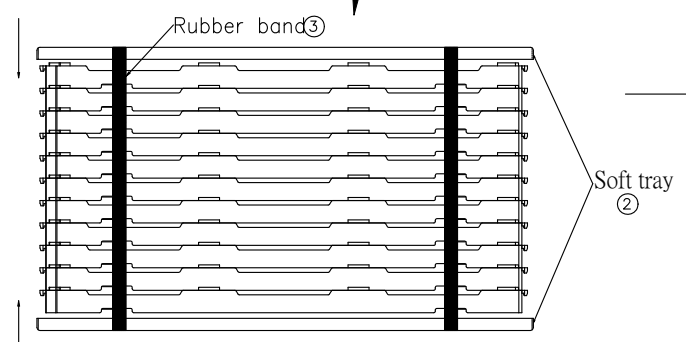
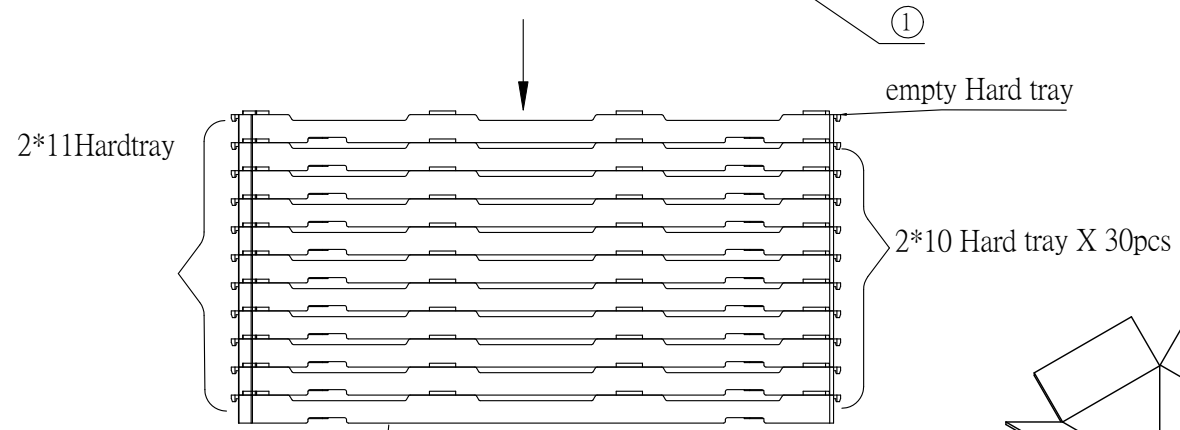
REV.	ECN NO./DESCRIPTION	DATE
A	R170324	06/16"18
B	R180670	12/24"20



PACKING MATERIAL			
NO.	NAME	SPEC (mm)	Q'TY
1	HARD TRAY	322.6*135.9*16.84 (mm)	22PCS
2	SOFT TRAY	323.2*135.8*8.0	4 PCS
3	RUBBER BAND	L320*W8*T2.0mm	4 PCS
4	DESICCANT	50g/BAG	2 BAG
5	TRANSPARENT FILM BAG	520*590*0.15(mm)	2 PCS
6	CARTON	350*300*195mm:K=K	1 PCS
7	LABEL		1 PCS

NOTES:

- 1. HARD TRAY CAPACITY: 30PCS
- 2. CARTON PACKING CAPACITY: 600PCS.



GENERAL TOLERANCES UNLESS SPECIFIED		PART NO.	LOTES		
.X ± 0.35	X° ± 3°	SEE TABLE	TITLE 164P PCI EXPRESS 4.0 SMT PACKING		
.XX ± 0.25	.X° ± 2°	APPROVED BY Mark 12/24"20	DWG. NO. GAP-APCI0470-1		
.XXX ± 0.15	.XX° ± 1°	CHECKED BY Yao 12/24"20	DRAWN BY Decheng 12/24"20		
SIZE A4	UNITS MM[INCH]	DRAWN BY Decheng 12/24"20		SHEET 1 / 1	SCALE 1:1
				REV B	

1 2 3 4 5 6 7 8

TABLE

NO.	PART NUMBER	HOUSING	TERMINAL	HOOK	MYLAR
1	APCI0470-P001C09	HOUSING _BLACK;UL94 V-0	PHOSPHOR BRONZE C5191_30u'Au	S50C	WITH
2	APCI0470-P002C09	HOUSING _BLACK;UL94 V-0	PHOSPHOR BRONZE C5191_15u'Au	S50C	WITH
3	APCI0470-P001C51	HOUSING _BLACK;UL94 V-0	PHOSPHOR BRONZE C5191_30u'Au	S50C	WITH
4	APCI0470-P001C03	HOUSING _BLACK;UL94 V-0	PHOSPHOR BRONZE C5191_30u'Au	S50C	WITH
5	APCI0470-P002C	HOUSING _BLACK;UL94 V-0	PHOSPHOR BRONZE C5191_15u'Au	S50C	WITH
6	APCI0470-P001C	HOUSING _BLACK;UL94 V-0	PHOSPHOR BRONZE C5191_30u'Au	S50C	WITH
7	APCI0470-P002C35	HOUSING _BLACK;UL94 V-0	PHOSPHOR BRONZE C5191_15u'Au	S50C	WITH
8	APCI0470-P005C	HOUSING _White;UL94 V-0	PHOSPHOR BRONZE C5191_15u'Au	S50C	WITH
9	APCI0470-P003C	HOUSING _BLACK;UL94 V-0	PHOSPHOR BRONZE C5191_30u'Au	S50C	WITH
10	APCI0470-P001C56	HOUSING _BLACK;UL94 V-0	PHOSPHOR BRONZE C5191_30u'Au	S50C	WITH
11	APCI0470-P002C16	HOUSING _BLACK;UL94 V-0	PHOSPHOR BRONZE C5191_15u'Au	S50C	WITH
12	APCI0470-P012C	HOUSING _BLACK;UL94 V-0	PHOSPHOR BRONZE C5191_1u'Au	S50C	WITH
13	APCI0470-P001C11	HOUSING _BLACK;UL94 V-0	PHOSPHOR BRONZE C5191_30u'Au	S50C	WITH
14	APCI0470-P011C	HOUSING _BLACK;UL94 V-0	PHOSPHOR BRONZE C5191_15u'Au	S50C	WITH
15	APCI0470-P001C06	HOUSING _BLACK;UL94 V-0	PHOSPHOR BRONZE C5191_30u'Au	S50C	WITH
16	APCI0470-P016C	HOUSING _BLACK;UL94 V-0	PHOSPHOR BRONZE C5191_30u'Au	S50C	N/A
17	APCI0470-P002C11	HOUSING _BLACK;UL94 V-0	PHOSPHOR BRONZE C5191_15u'Au	S50C	WITH
18	APCI0470-P010C	HOUSING _BLUE(287C);UL94 V-0	PHOSPHOR BRONZE C5191_15u'Au	S50C	WITH
19	APCI0470-P008C	HOUSING _BLACK;UL94 V-0	PHOSPHOR BRONZE C5191_30u'Au	S50C	WITH

1 2 3 4 5 6 7 8