
Radxa CM3S IO Board

an Application Board for Radxa CM3S

Revision 1.0

2023-04-19



Contents

1	Revision Control Table	2
2	Introduction	3
3	Features	3
3.1	Interface Overview	3
4	Mechanical Specification	4
5	Availability	4
6	Support	4

1 Revision Control Table

Version	Date	Changes from previous version
1.0	19/04/2023	First version

2 Introduction

Radxa CM3S IO Board is a cost-effective, interface-rich application board for Radxa CM3S, providing SD card slot, SATA interface, PCIe, HDMI, MIPI, Ethernet, TP interface, eDP screen, USB3.0, USB2.0, RTC, CSI, GPIO, headphone jack, fan and other rich peripheral interfaces.

Dimensions: 160mm × 90mm

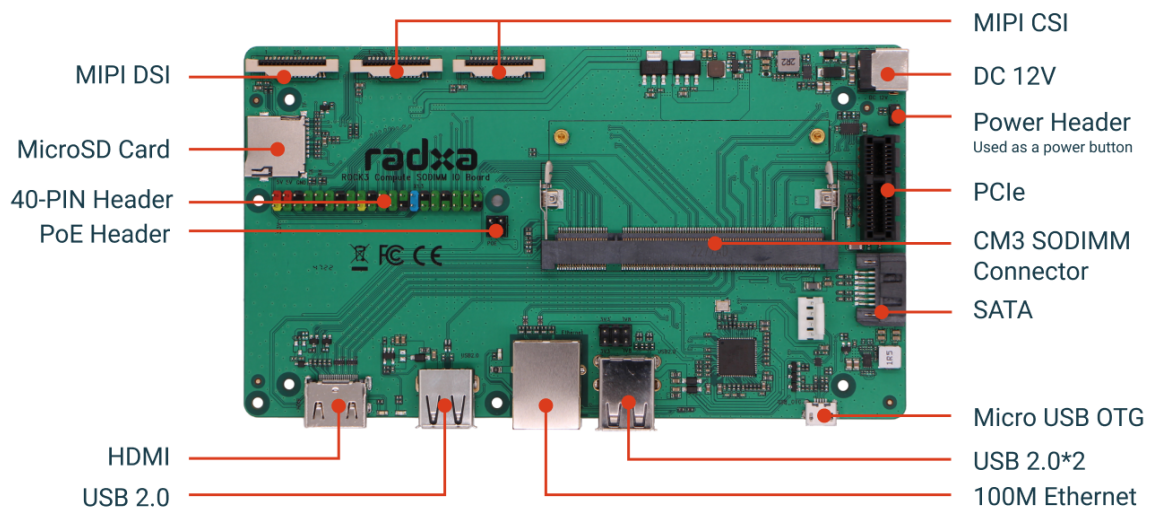


Figure 1: Radxa CM3S IO Board

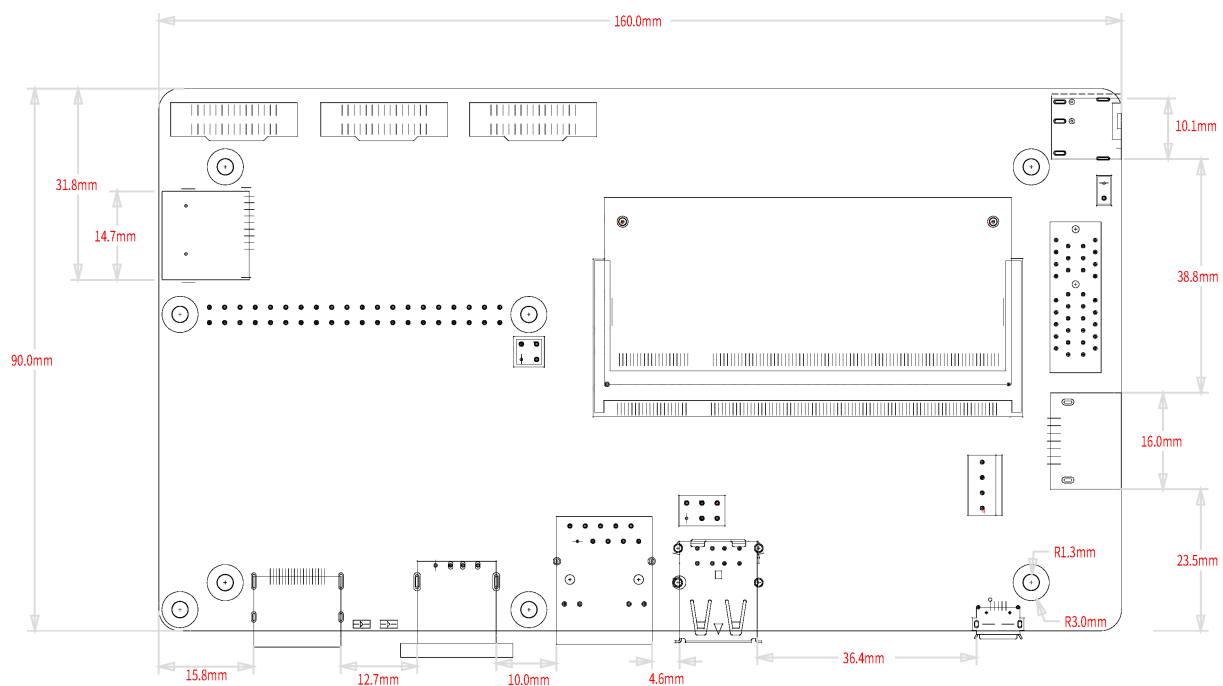
3 Features

3.1 Interface Overview

- 1x MIPI DSI
- 2x MIPI CSI
- 1x DC 12V power
- 1x PCIe
- 1x SATA
- 3x USB 2.0
- 1x 100M Ethernet
- 1x SATA Power Header
- 1x HDMI 2.0

- 1x SD Card Slot
- 1x PoE Header
- 1x Radxa CM3S connector
- 1x 40-Pins GPIO

4 Mechanical Specification



5 Availability

Radxa guarantees availability of the Radxa CM3S IO Board until at least September 2033.

6 Support

For support please see the hardware documentation section of the [Radxa Wiki](#) website and post questions to the [Radxa forum](#).