



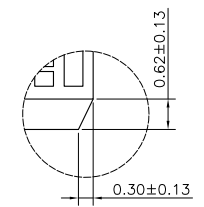
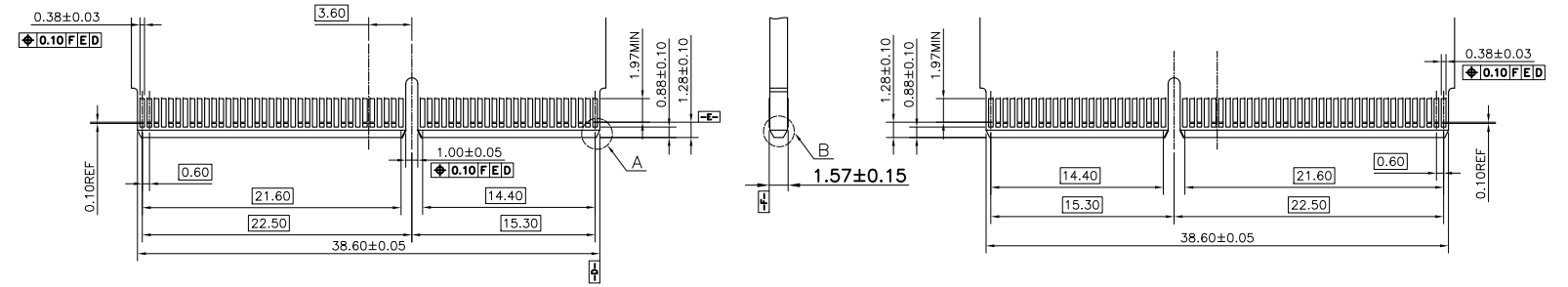
1 2 3 4 5 6 7 8

REV.	ECN NO./DESCRIPTION	DATE
B	R200043	06/11'21
C	R200043	06/29'21
D	R200043	01/11'22

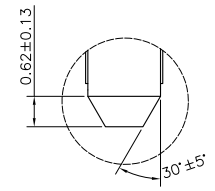
A1	GND	GND	B1
A2	SIGNAL	SIGNAL	B2
A3	SIGNAL	SIGNAL	B3
A4	GND	GND	B4
A5	SIGNAL	SIGNAL	B5
A6	SIGNAL	SIGNAL	B6
A7	GND	GND	B7
A8	SIDE BAND	SIDE BAND	B8
A9	SIDE BAND	SIDE BAND	B9
A10	SIDE BAND	SIDE BAND	B10
A11	SIDE BAND	SIDE BAND	B11
A12	SIDE BAND	SIDE BAND	B12
A13	GND	GND	B13
A14	SIGNAL	SIGNAL	B14
A15	SIGNAL	SIGNAL	B15
A16	GND	GND	B16
A17	SIGNAL	SIGNAL	B17
A18	SIGNAL	SIGNAL	B18
A19	GND	GND	B19
A20	SIGNAL	SIGNAL	B20
A21	SIGNAL	SIGNAL	B21
A22	GND	GND	B22
A23	SIGNAL	SIGNAL	B23
A24	SIGNAL	SIGNAL	B24
A25	GND	GND	B25
A26	SIDE BAND	SIDE BAND	B26
A27	SIDE BAND	SIDE BAND	B27
A28	SIDE BAND	SIDE BAND	B28
A29	SIDE BAND	SIDE BAND	B29
A30	SIDE BAND	SIDE BAND	B30
A31	GND	GND	B31
A32	SIGNAL	SIGNAL	B32
A33	SIGNAL	SIGNAL	B33
A34	GND	GND	B34
A35	SIGNAL	SIGNAL	B35
A36	SIGNAL	SIGNAL	B36
A37	GND	GND	B37
KEY			
A38	GND	GND	B38
A39	SIGNAL	SIGNAL	B39
A40	SIGNAL	SIGNAL	B40
A41	GND	GND	B41
A42	SIGNAL	SIGNAL	B42
A43	SIGNAL	SIGNAL	B43
A44	GND	GND	B44
A45	SIGNAL	SIGNAL	B45
A46	SIGNAL	SIGNAL	B46
A47	GND	GND	B47
A48	SIGNAL	SIGNAL	B48
A49	SIGNAL	SIGNAL	B49
A50	GND	GND	B50
A51	SIGNAL	SIGNAL	B51
A52	SIGNAL	SIGNAL	B52
A53	GND	GND	B53
A54	SIGNAL	SIGNAL	B54
A55	SIGNAL	SIGNAL	B55
A56	GND	GND	B56
A57	SIGNAL	SIGNAL	B57
A58	SIGNAL	SIGNAL	B58
A59	GND	GND	B59
A60	SIGNAL	SIGNAL	B60
A61	SIGNAL	SIGNAL	B61
A62	GND	GND	B62

CONNECTOR PIN ASSIGNMENT

NOTES: ALL GROUND PINS ON THE SAME SIDE INSIDE THE CONNECTOR ARE SHORT CONNECTED BY EMI



DETAIL A (SCALE 4:1)



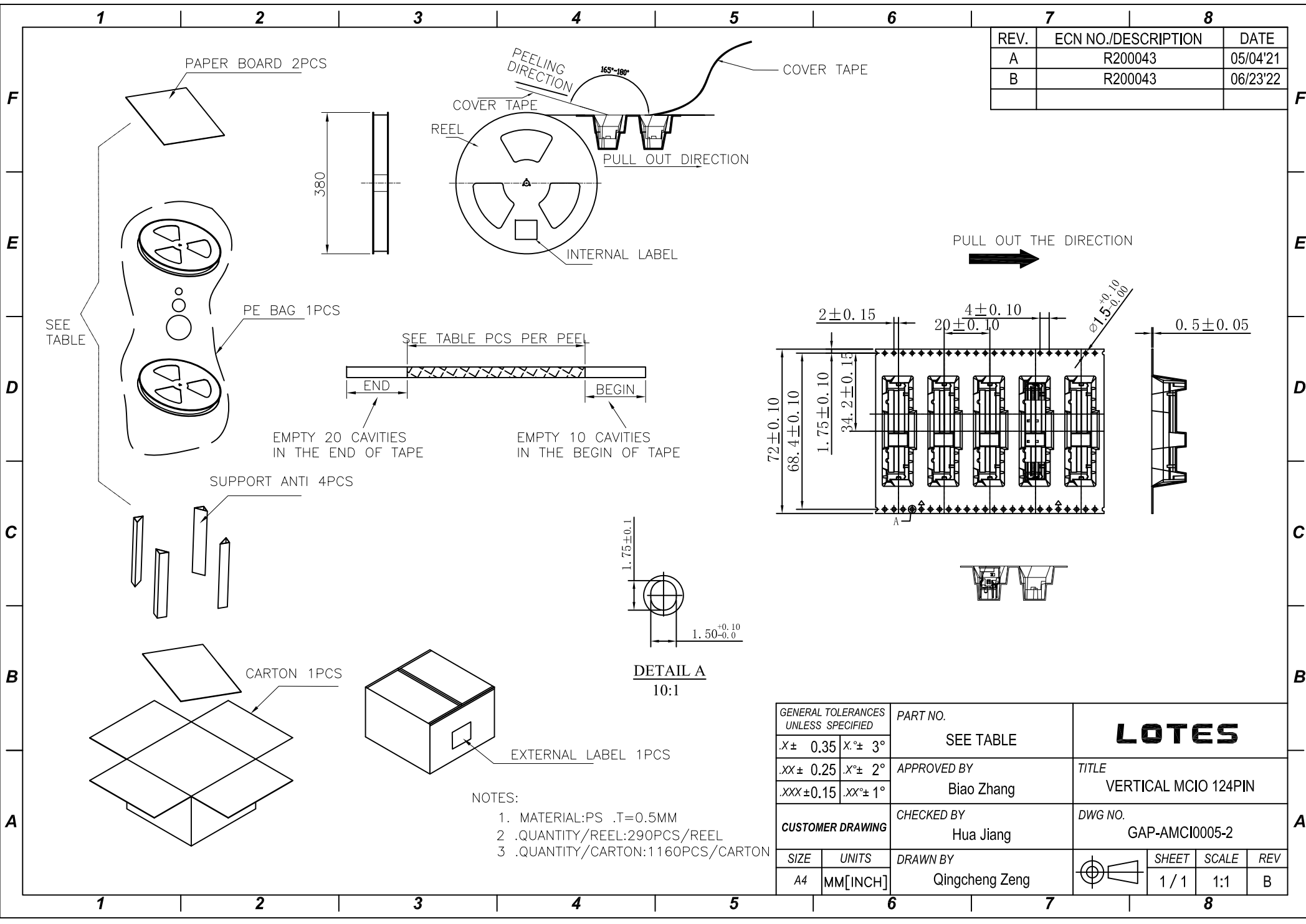
DETAIL B (SCALE 4:1)

RECOMMENDED PLUG PADDLE CARD DIMENSIONS

GENERAL TOLERANCES UNLESS SPECIFIED		PART NO. SEE TABLE	<b>LOTES</b>			
$X \pm 0.35$	$X^\circ \pm 3^\circ$					
$.XX \pm 0.25$	$.X^\circ \pm 2^\circ$	APPROVED BY Biao Zhang	TITLE VERTICAL MCIO 124PIN			
$.XXX \pm 0.15$	$.XX^\circ \pm 1^\circ$					
CUSTOMER DRAWING		CHECKED BY Hua Jiang	DWG NO. GAP-AMCI0005			
SIZE A4	UNITS MM[INCH]	DRAWN BY Bin Liu		SHEET 2 / 2	SCALE 5:3	REV D

1 2 3 4 5 6 7 8

REV.	ECN NO./DESCRIPTION	DATE
A	R200043	05/04'21
B	R200043	06/23'22



EMPTY 20 CAVITIES  
IN THE END OF TAPE

EMPTY 10 CAVITIES  
IN THE BEGIN OF TAPE

**DETAIL A**  
10:1

- NOTES:
1. MATERIAL:PS .T=0.5MM
  - 2 .QUANTITY/REEL:290PCS/REEL
  - 3 .QUANTITY/CARTON:1160PCS/CARTON

GENERAL TOLERANCES UNLESS SPECIFIED		PART NO.	<b>LOTES</b>		
.X± 0.35	.X°± 3°	SEE TABLE			
.XX± 0.25	.X°± 2°	APPROVED BY	TITLE VERTICAL MCIO 124PIN		
.XXX±0.15	.XX°± 1°	Biao Zhang			
CUSTOMER DRAWING		CHECKED BY	DWG NO. GAP-AMCI0005-2		
		Hua Jiang			
SIZE	UNITS	DRAWN BY	SHEET	SCALE	REV
A4	MM[INCH]	Qingcheng Zeng			

1

2

3

4

5

6

7

8

F

F

E

E

TABLE

SPECIFICATION

	PART NUMBER	HOUSING GF&COLOUR	MODING GF&COLOUR	CAP GF&COLOUR	CONTACT	SHELL	EMI	DIM A	DIM B
1	AMCI0005-P001AC	LCP+40%GF_BLACK	LCP+40%GF_BLACK	LCP+40%GF_BLACK	C7025_30u" Au,	SUS304	SUS304	3.00MM	2.00MM
2	AMCI0005-P003AC	LCP+40%GF_BLACK	LCP+40%GF_BLACK	LCP+40%GF_BLACK	C7025_30u" Au,	SUS304	SUS304	2.20MM	2.00MM

D

D

C

C

B

B

A

A

1

2

3

4

5

6

7

8