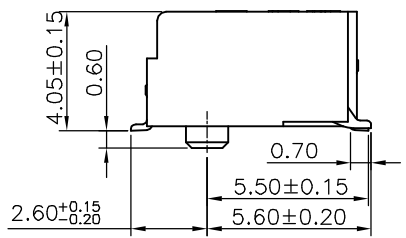
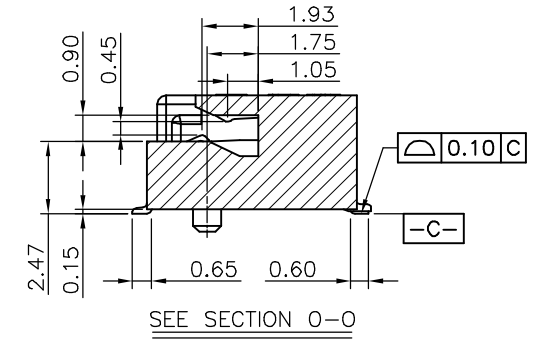
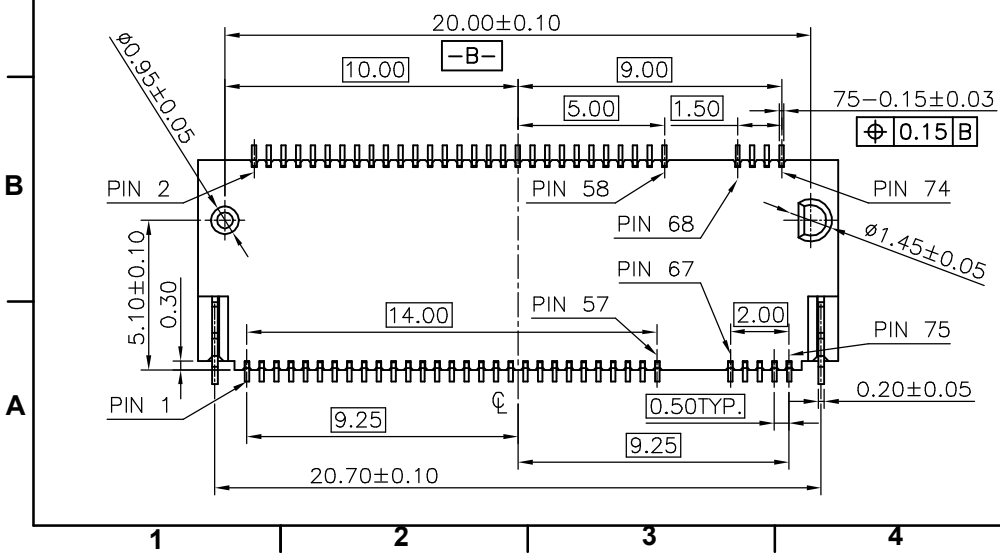
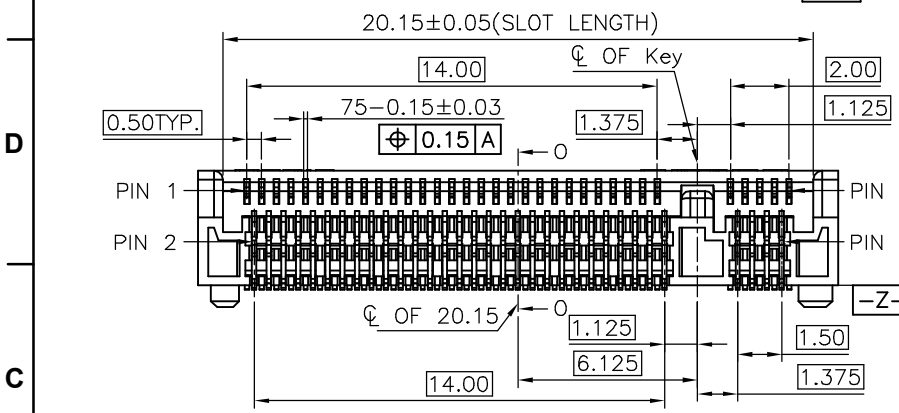
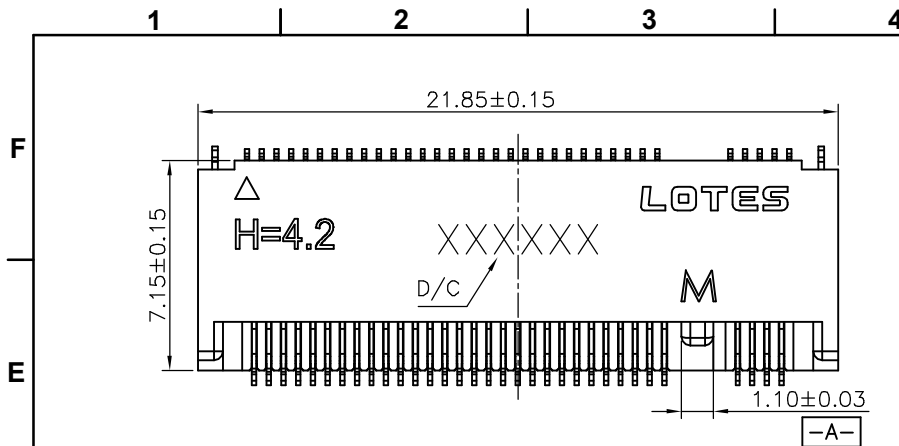


REV.	ECR/N NO./DESCRIPTION	DATE	DRAWN	CHECKED	APPROVE
1	SN22026	04/25'22	Nan.Zhou	Vito	Herch



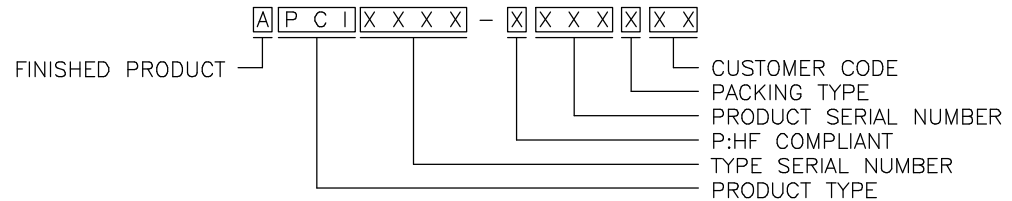
GENERAL TOLERANCES UNLESS SPECIFIED		PART NO. SEE TABLE	LOTES		
X ± 0.35	X° ± 3°				
XX ± 0.25	X° ± 2°		CHECKED BY Vito	DWG NO. AP-APCI0359	
XXX ± 0.15	.XX° ± 1°	DRAWN BY Nan.Zhou	SHEET 1 / 5	SCALE 4:1	REV 1
CUSTOMER DRAWING			AP-APCI0359		
SIZE A4	UNITS MM [INCH]				

TABLE:

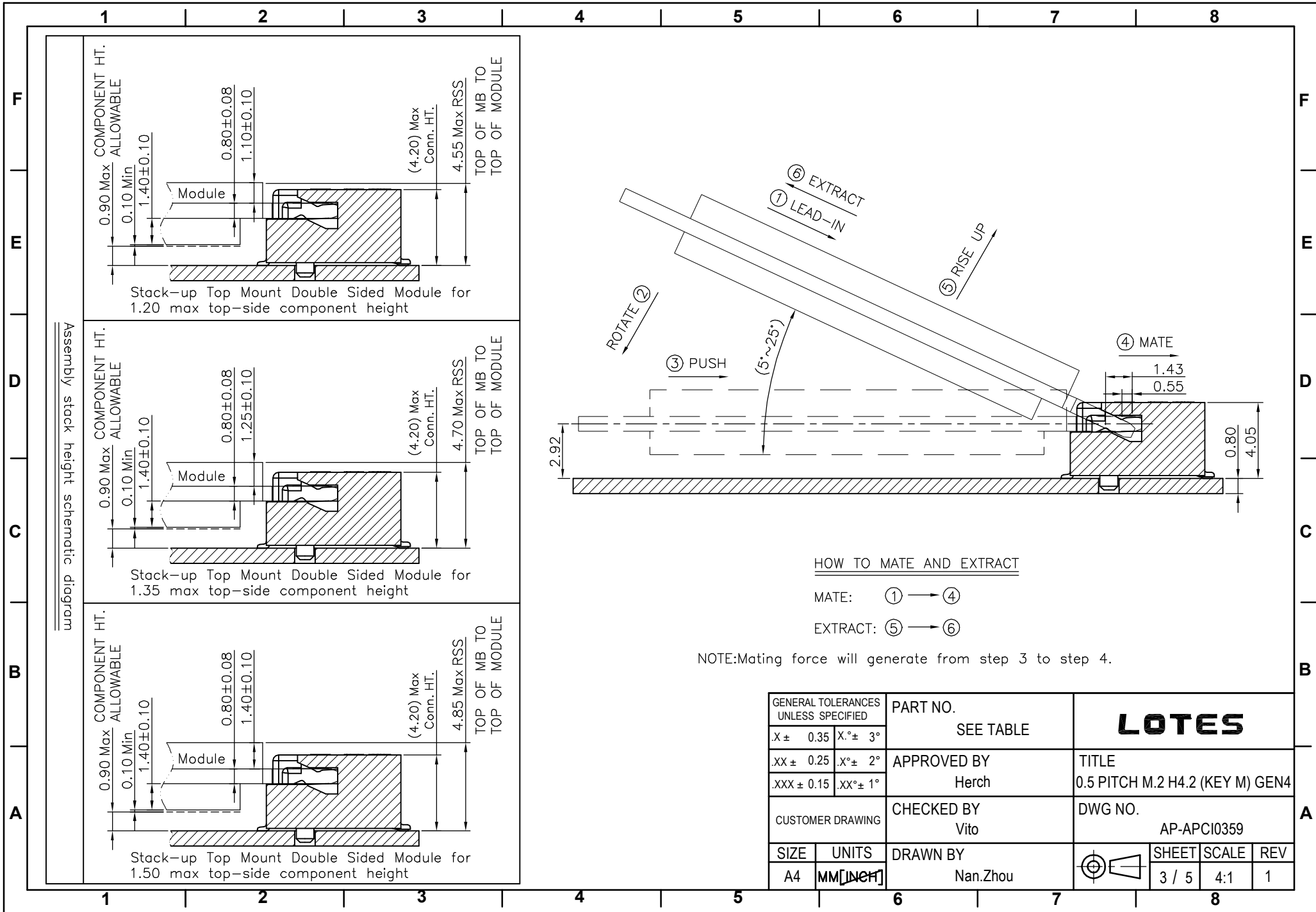
NO.	PART NO.	DESCRIPTION	DURABILITY
1	APCI0359-P001A	GOLD 1u" MIN ON CONTACT AREA	25 CYCLES
		GOLD 1u" MIN ON SOLDER AREA	
2	APCI0359-P002A	GOLD 10u" ON CONTACT AREA	25 CYCLES
		GOLD 1u" MIN ON SOLDER AREA	
3	APCI0359-P003A	GOLD 15u" ON CONTACT AREA	25 CYCLES
		GOLD 1u" MIN ON SOLDER AREA	
4	APCI0359-P004A	GOLD 30u" ON CONTACT AREA	60 CYCLES
		GOLD 1u" MIN ON SOLDER AREA	

Notes:

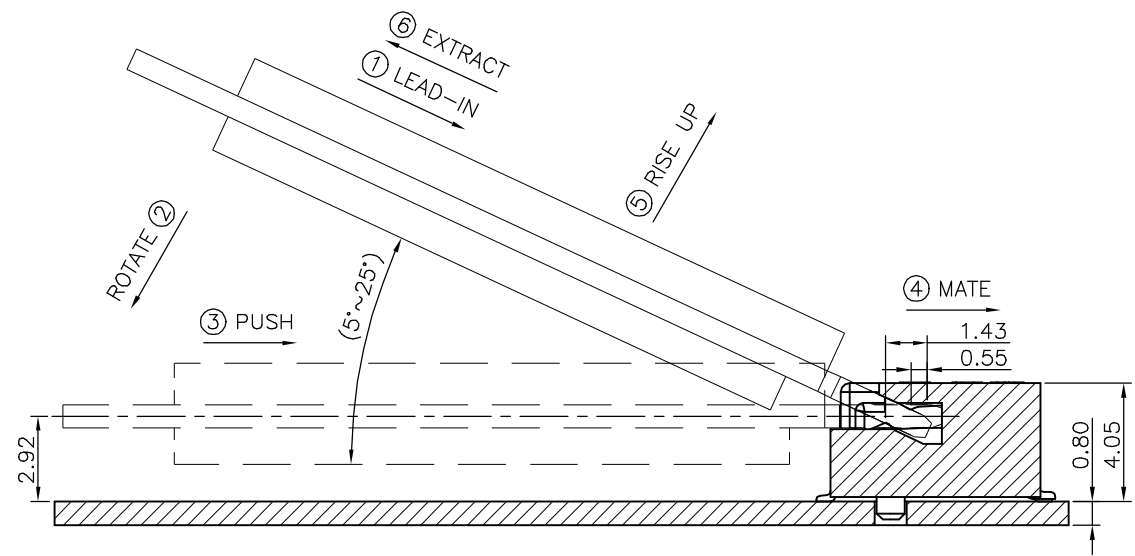
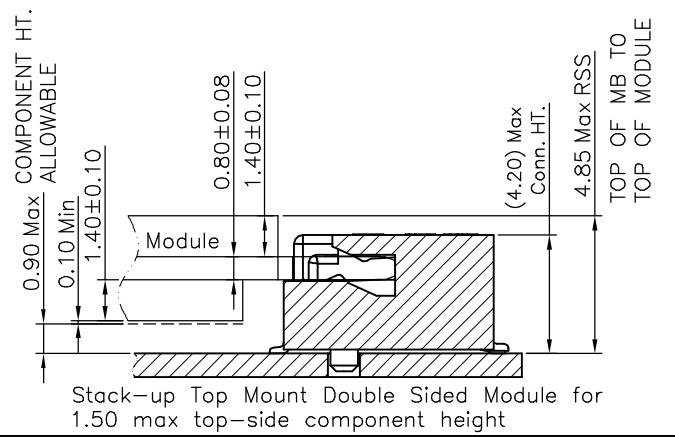
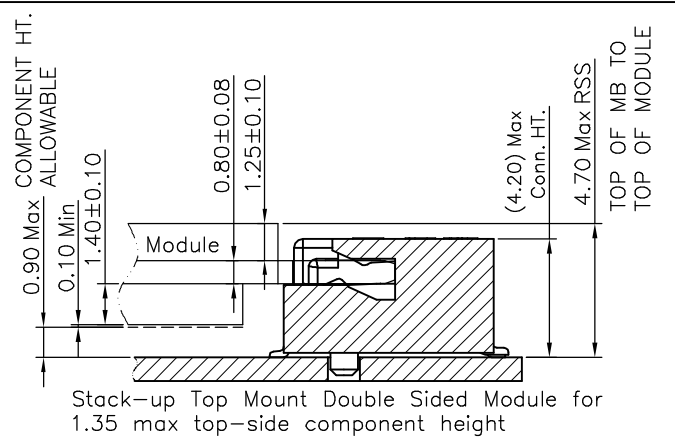
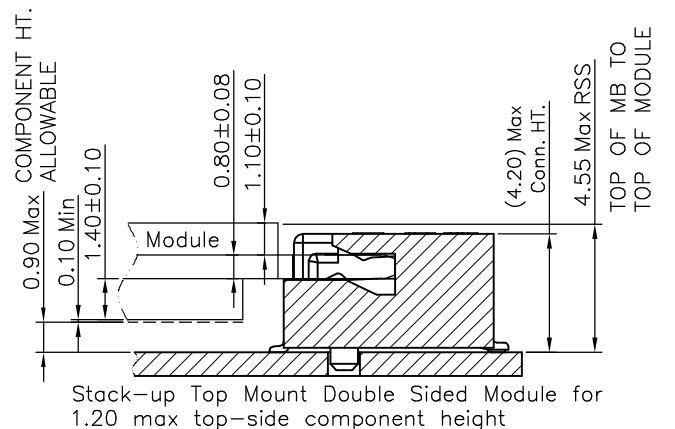
1. MATERIAL SPECIFICATION:
 - 1.1. HOUSING:LCP+40%GF,UL94V-0,COLOR:BLACK.
 - 1.2. CONTACT:COPPER ALLOY.
 - 1.3. PEG:STEEL.
2. PLATING SPECIFICATION:
 - 2.1. CONTACT:50u" MIN.NICKEL UNDER PLATING OVER ALL.PLATING ON SOLDER AREA:SEE TABLE GOLD PLATING ON CONTACT AREA:SEE TABLE
 - 2.2. PEG:50u" MIN. NICKEL UNDER PLATING OVER ALL. 80u" MIN. MATTE TIN PLATING ON SOLDER AREA.
3. HF COMPLIANT, RoHS COMPLIANT.
4. DATE CODE: XX XX XX
 DAY
 WEEK
 YEAR
5. MECHANICAL PERFORMANCE:
 - 5.1. DURABILITY: SEE TABLE
6. ELECTRICAL PERFORMANCE:
 - 6.1. CURRENT: 0.5A PER PIN.
 - 6.2. LLCR: INITIAL 55mΩ MAX.;FINAL ΔLLCR=20mΩ MAX.
7. IR REFLOW:
 THE TEMPERATURE SHALL BE 260±5°C MAINTAINING 10±1 SECONDS.
8. PRODUCT NUMBER NOTE:



GENERAL TOLERANCES UNLESS SPECIFIED		PART NO.	LOTES			
X ± 0.35	X° ± 3°	SEE TABLE				
XX ± 0.25	X° ± 2°	APPROVED BY	TITLE			
XXX ± 0.15	XX° ± 1°	Herch	0.5 PITCH M.2 H4.2 (KEY M) GEN4			
CUSTOMER DRAWING		CHECKED BY	DWG NO.			
		Vito	AP-APCI0359			
SIZE	UNITS	DRAWN BY		SHEET	SCALE	REV
A4	MM [INCH]	Nan.Zhou		2 / 5	4:1	1



Assembly schematic diagram



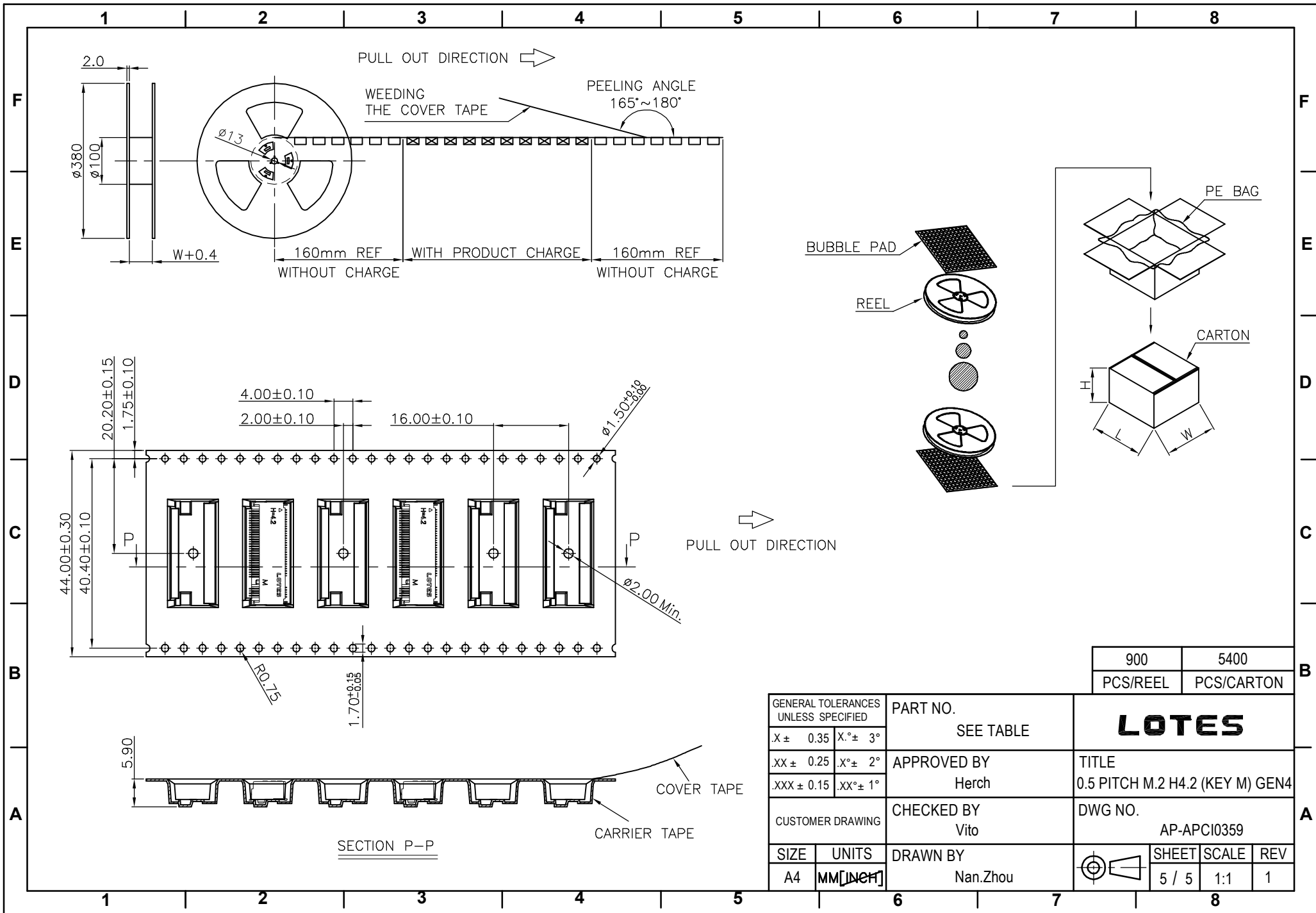
HOW TO MATE AND EXTRACT

MATE: ① → ④

EXTRACT: ⑤ → ⑥

NOTE: Mating force will generate from step 3 to step 4.

GENERAL TOLERANCES UNLESS SPECIFIED		PART NO.	LOTES			
SEE TABLE		SEE TABLE				
X ± 0.35	X° ± 3°	APPROVED BY	TITLE			
XX ± 0.25	XX° ± 2°	Herch	0.5 PITCH M.2 H4.2 (KEY M) GEN4			
XXX ± 0.15	XXX° ± 1°	CHECKED BY	DWG NO.			
CUSTOMER DRAWING		Vito	AP-APCI0359			
SIZE	UNITS	DRAWN BY		SHEET	SCALE	REV
A4	MM [INCH]	Nan.Zhou		3 / 5	4:1	1



900	5400
PCS/REEL	PCS/CARTON

GENERAL TOLERANCES UNLESS SPECIFIED		PART NO. SEE TABLE	LOTES			
X ± 0.35	X° ± 3°					
.XX ± 0.25	X° ± 2°	APPROVED BY Herch	TITLE 0.5 PITCH M.2 H4.2 (KEY M) GEN4			
.XXX ± 0.15	.XX° ± 1°	CHECKED BY Vito	DWG NO. AP-APCI0359			
SIZE A4	UNITS MM [INCH]	DRAWN BY Nan.Zhou		SHEET 5 / 5	SCALE 1:1	REV 1