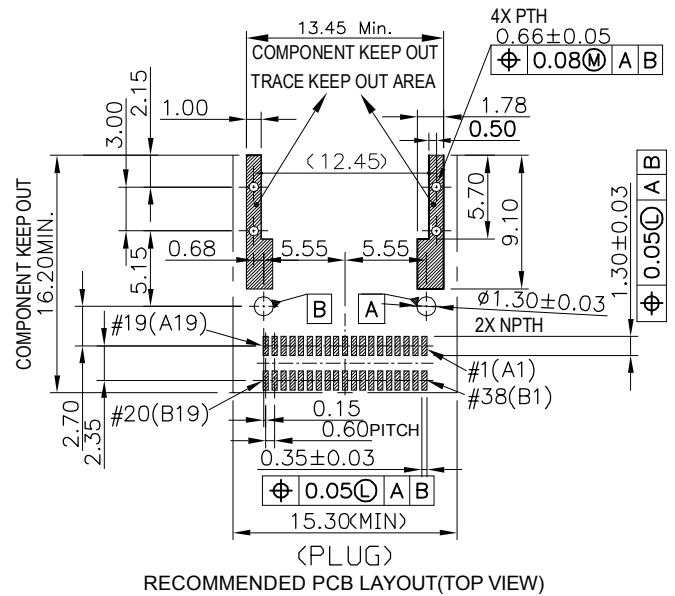
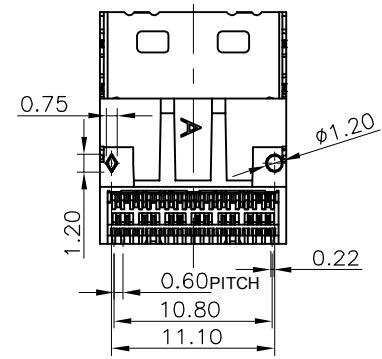
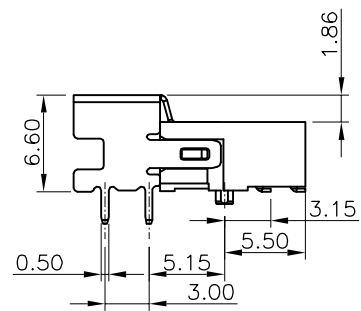
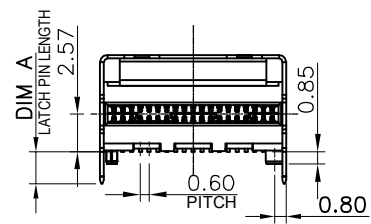
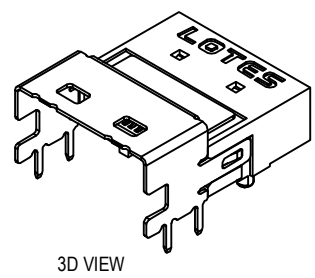
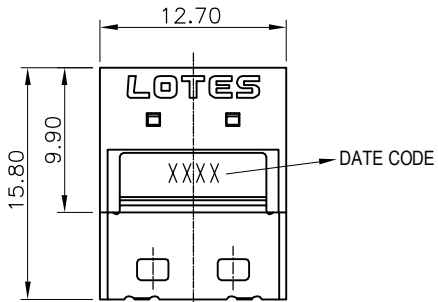


1 2 3 4 5 6 7 8

REV.	ECN NO./DESCRIPTION	DATE
A	R200117	2021/11/10



- NOTES :
- MATERIAL :
    - HOUSING : HIGH TEMPERATURE THERMOPLASTIC, UL94V-0, BLACK;
    - CONTACT : HIGH PERFORMANCE COPPER ALLOY;
    - SHELL : STAINLESS STEEL;
  - FINISH:
    - CONTACT : 50u" Min. NICKEL UNDER PLATING OVERALL; 100u" Min. MATTE TIN PLATING ON SOLDER AREA; CONTACT AREA PLATING SEE TABLE;
    - SHELL : 50u" NIKEL UNDER PLATING OVERALL;
  - HSF COMPLIANT (RoHS 2.0, PFOS, HF),
  - MECHANICAL SPEC:
 

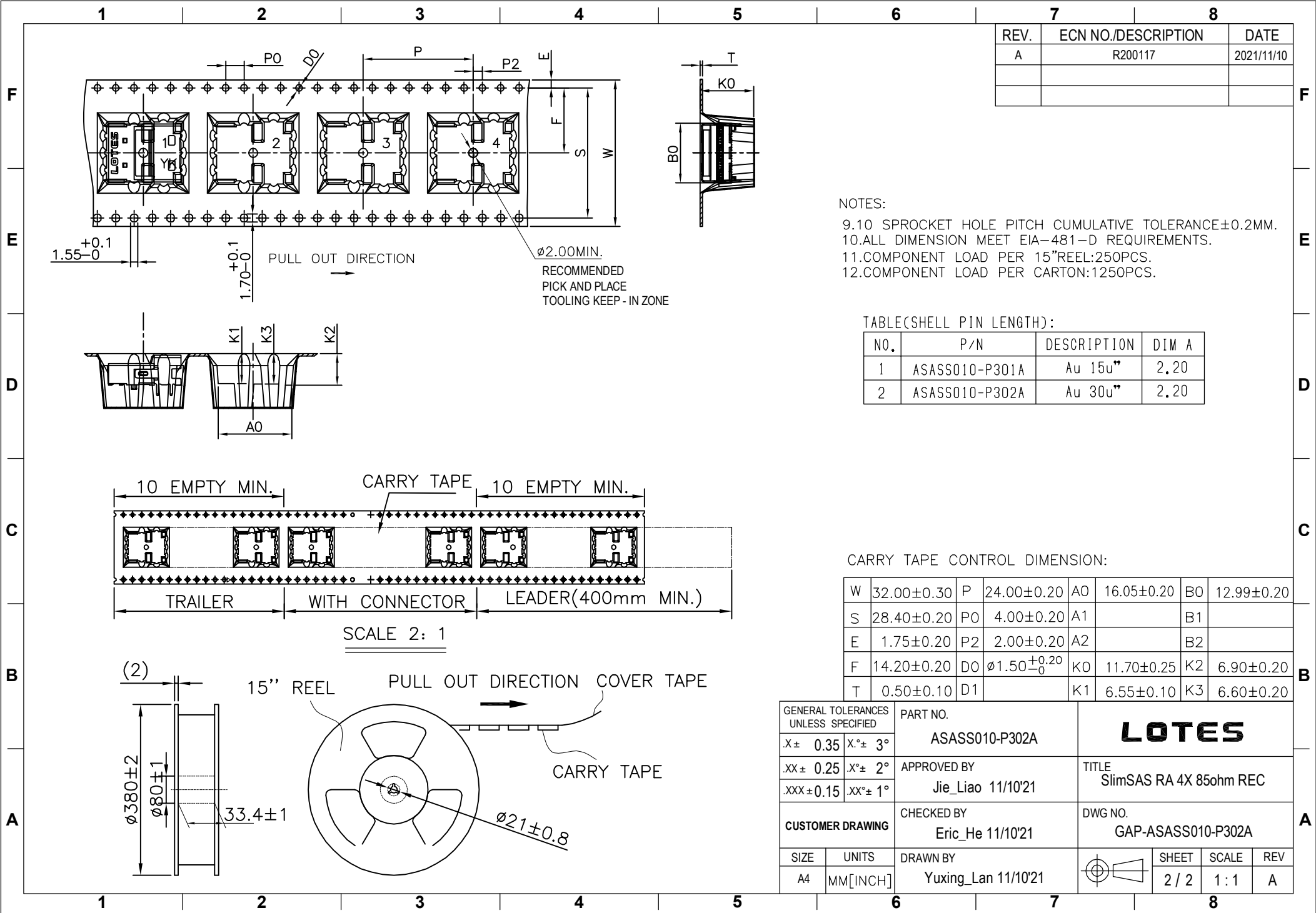
DURABILITY: 250 MATING CYCLES.  
 MATING FORCE: 21N MAX.  
 UNMATING FORCE: 18N MAX.
  - IR REFLOW TEMPRATURE, THE CONNECTOR SHALL BE MOUNTED ON THE PCB. THE TEMPRATURE OF THE SOLDER SHALL BE 260±5°C AND MAINTAINING 10±1 SECONDS.
  - DATE CODE: XX XX
    - WEEK
    - YEAR
  - DIFFERENTIAL IMPERDANCE: 85 OHM.
  - PRODUCT NUMBER NOTE:
 

ASASS010 - P30XA

    - PACK TYPE
    - CONTACT PLATING(01=15u",02=30u")
    - LATCH PIN
    - P: HF COMPLIANT
    - TYPE SERIAL NUMBER
    - SAS TYPE
    - FINISHED PRODUCT

GENERAL TOLERANCES UNLESS SPECIFIED		PART NO.	<b>LOTES</b>			
X± 0.35	X°± 3°	ASASS010-P302A	TITLE SlimSAS RA 4X 85ohm REC			
.XX± 0.25	.X°± 2°	APPROVED BY Jie_Liao 11/10'21	DWG NO. GAP-ASASS010-P302A			
.XXX± 0.15	.XX°± 1°	CHECKED BY Eric_He 11/10'21	DRAWN BY Yuxing_Lan 11/10'21			
SIZE	UNITS	DRAWN BY Yuxing_Lan 11/10'21	SHEET 1 / 2	SCALE 2 : 1	REV A	
A4	MM[INCH]					

1 2 3 4 5 6 7 8



REV.	ECN NO./DESCRIPTION	DATE
A	R200117	2021/11/10

NOTES:  
 9.10 SPROCKET HOLE PITCH CUMULATIVE TOLERANCE±0.2MM.  
 10.ALL DIMENSION MEET EIA-481-D REQUIREMENTS.  
 11.COMPONENT LOAD PER 15"REEL:250PCS.  
 12.COMPONENT LOAD PER CARTON:1250PCS.

TABLE(SHELL PIN LENGTH):

NO.	P/N	DESCRIPTION	DIM A
1	ASASS010-P301A	Au 15u"	2.20
2	ASASS010-P302A	Au 30u"	2.20

CARRY TAPE CONTROL DIMENSION:

W	32.00±0.30	P	24.00±0.20	A0	16.05±0.20	B0	12.99±0.20
S	28.40±0.20	P0	4.00±0.20	A1		B1	
E	1.75±0.20	P2	2.00±0.20	A2		B2	
F	14.20±0.20	D0	ø1.50 <sup>+0.20</sup> / <sub>0</sub>	K0	11.70±0.25	K2	6.90±0.20
T	0.50±0.10	D1		K1	6.55±0.10	K3	6.60±0.20

GENERAL TOLERANCES UNLESS SPECIFIED		PART NO.		<b>LOTES</b>		
X± 0.35	X.°± 3°	ASASS010-P302A				
.XX± 0.25	.X.°± 2°	APPROVED BY		TITLE		
.XXX±0.15	.XX.°± 1°	Jie_Liao 11/10'21		SlimSAS RA 4X 85ohm REC		
CUSTOMER DRAWING		CHECKED BY		DWG NO.		
		Eric_He 11/10'21		GAP-ASASS010-P302A		
SIZE	UNITS	DRAWN BY		SHEET	SCALE	REV
A4	MM[INCH]	Yuxing_Lan 11/10'21				