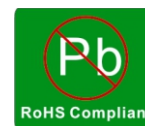


# SPECIFICATION FOR APPROVAL



CUSTOMER : \_\_\_\_\_

CUSTOMER P/N : \_\_\_\_\_

SME P/N : \_\_\_\_\_ HI0520-8R2M \_\_\_\_\_

EDITION : \_\_\_\_\_ A.0 \_\_\_\_\_

DATE : \_\_\_\_\_ 2022-07-07 \_\_\_\_\_

DRAWING		
MADE	CHECK	APPROVAL
Lee Jin	Sam	May

CUSTOMER APPROVE

## SHANGHAI MEISONGBEI ELECTRONICS CO.,LTD

Add: No.3891 Jinxiu Road, Pudong New District, Shanghai, China

Tel:+86-21-62883517 Fax:+86-21-62883519

Http://www.meisongbei.com

E-mail:sales@meisongbei.com

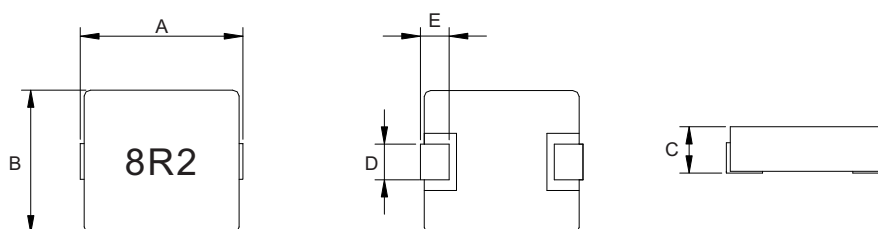
# SPECIFICATION FOR APPROVAL

Customer:  
 Customer P/N:  
 SME P/N: HI0520-8R2M  
 Date: 2022-07-07



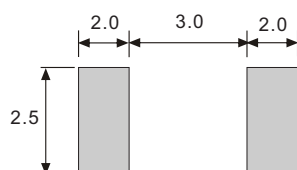
Page 1 / 2

## A Dimensions: Unit(mm)

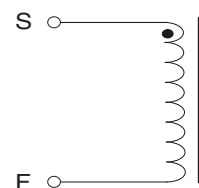


Part No.	A	B	C	D	E
HI0520-8R2M	5.5±0.3	5.2±0.3	2.0 max	2.3±0.3	1.2±0.3

## B Soldering: Unit(mm)



## C Schematic:



## D Electrical Specifications

Part Number	Inductance	DCR	Isat (L drop 30% max)	I <sub>rms</sub> (ΔT=40°C rise max)
	L(μH)	mΩ	A	A
HI0520-8R2M	8.2±20%	150 max.	3.3 max	2.6 max

## E Test equipment

- L: CH-1062A LCR METER(100KHz, 1V)
- DCR: CH-16502BC IMPEDANCE METER
- I-sat: CH-3302 LCR METER + CH-1320 BIAS
- I<sub>rms</sub>: DIGITAL THERMOMETER: DM6801A

## F Material List:

- Core: FeSiCr Iron Powder
- Coil: Cu/E200/G2Polyurethane enameled

## G Test Condition:

- Humidity: 75%
- Temperature: 25°C

## H General Specifications:

- Storage temp range: -40°C to +125°C
- Operating temp range: -40°C to +125°C

Made	Lee Jin	Checked	Sam	Approved	May
------	---------	---------	-----	----------	-----

**Shanghai Meisongbei Electronics Co.,Ltd.**

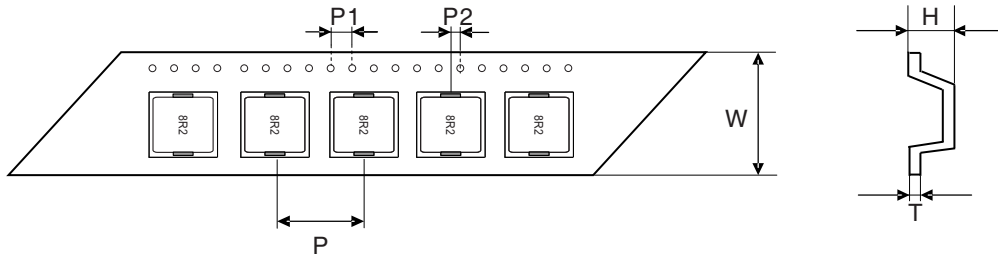
Add: No.3891 Jinxiu Road, Pudong New District, Shanghai, China Tel:+86-21-62883517 Fax:+86-21-62883519  
 Http://www.meisongbei.com

# SPECIFICATION FOR APPROVAL

Customer:  
 Customer P/N:  
 SME P/N: HI0520-8R2M  
 Date: 2022-07-07

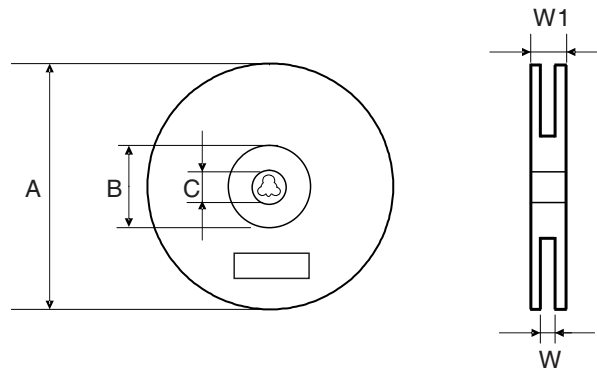


## I Tape & Reel Specifications:



Unit: mm

Type	Dimension	W	P	P1	P2	H	T
	Tolerance	±0.3	±0.1	±0.1	±0.1	±0.15	±0.05
HI0520-8R2M		16.0	12.0	4.00	2.00	2.20	0.35



Unit: mm

Type	Dimension	QTY Per Reel	A	B	C	W	W1
	Tolerance	Pcs	±2.0	min	±0.5	±0.5	±3.0
HI0520-8R2M		2000	330	100	13.5	16.4	22.4

Made	Lee Jin	Checked	Sam	Approved	May
------	---------	---------	-----	----------	-----

**Shanghai Meisongbei Electronics Co.,Ltd.**

Add: No.3891 Jinxiu Road, Pudong New District, Shanghai, China Tel:+86-21-62883517 Fax:+86-21-62883519  
 Http://www.meisongbei.com