

XPT IGBT Module

tentative

$$V_{CES} = 650V$$

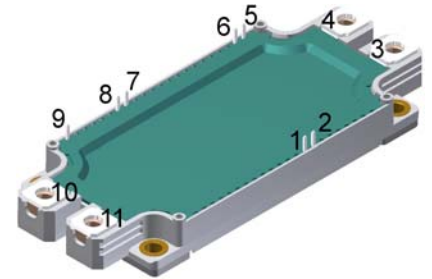
$$I_{C25} = 2 \times 720A$$

$$V_{CE(sat)} = 1.65V$$

Common collector + free wheeling diodes

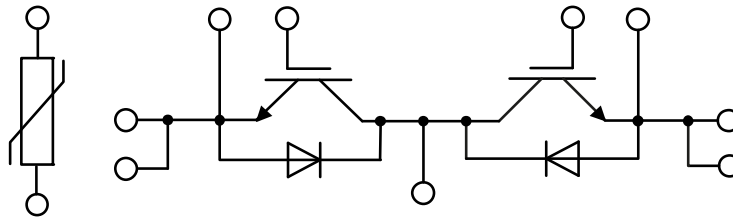
Part number

MIXA600CF650TSF



Backside: isolated

E72873

**Features / Advantages:**

- High level of integration - only one power semiconductor module required for the whole drive
- Rugged XPT design (Xtreme light Punch Through) results in:
 - short circuit rated for 10 μ sec.
 - very low gate charge
 - low EMI
 - square RBSOA @ 2 x I_c
- Thin wafer technology combined with the XPT design results in a competitive low $V_{CE(sat)}$
- Temperature sense included
- SONIC™ diode
 - fast and soft reverse recovery
 - low operating forward voltage

Applications:

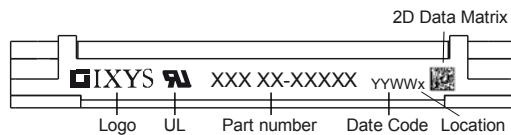
- AC motor drives
- Pumps, Fans
- Washing machines
- Air-conditioning system
- Inverter and power supplies

Package: SimBus F

- Isolation Voltage: 3000V~
- Industry standard outline
- RoHS compliant
- Soldering pins for PCB mounting
- Height: 17 mm
- Base plate: Copper internally DCB isolated
- Advanced power cycling

IGBT				Ratings			
Symbol	Definition	Conditions	min.	typ.	max.	Unit	
V_{CES}	collector emitter voltage	$T_{VJ} = 25^{\circ}\text{C}$			650	V	
V_{GES}	max. DC gate voltage				± 20	V	
V_{GEM}	max. transient gate emitter voltage				± 30	V	
I_{C25}	collector current	$T_C = 25^{\circ}\text{C}$			720	A	
I_{C80}		$T_C = 80^{\circ}\text{C}$			490	A	
P_{tot}	total power dissipation	$T_C = 25^{\circ}\text{C}$			1750	W	
$V_{CE(sat)}$	collector emitter saturation voltage	$I_C = 600\text{A}; V_{GE} = 15\text{V}$		1.65	1.8	V	
				1.85		V	
$V_{GE(th)}$	gate emitter threshold voltage	$I_C = 3.2\text{mA}; V_{GE} = V_{CE}$	4	4.8	5.5	V	
I_{CES}	collector emitter leakage current	$V_{CE} = V_{CES}; V_{GE} = 0\text{V}$			1.8	mA	
				2		mA	
I_{GES}	gate emitter leakage current	$V_{GE} = \pm 20\text{V}$			1.5	μA	
$Q_{G(on)}$	total gate charge	$V_{CE} = 300\text{V}; V_{GE} = 15\text{V}; I_C = 600\text{A}$		840		nC	
$t_{d(on)}$	turn-on delay time	inductive load $V_{CE} = 300\text{V}; I_C = 600\text{A}$ $V_{GE} = \pm 15\text{V}; R_G = 1.3\ \Omega$		90		ns	
t_r	current rise time		$T_{VJ} = 150^{\circ}\text{C}$	50		ns	
$t_{d(off)}$	turn-off delay time		100		ns		
t_f	current fall time		40		ns		
E_{on}	turn-on energy per pulse		6		mJ		
E_{off}	turn-off energy per pulse		22.8		mJ		
RBSOA	reverse bias safe operating area	$V_{GE} = \pm 15\text{V}; R_G = 1.3\ \Omega$					
I_{CM}		$V_{CEmax} = 650\text{V}$			1200	A	
SCSOA	short circuit safe operating area	$V_{CEmax} = 650\text{V}$					
t_{sc}	short circuit duration	$V_{CE} = 900\text{V}; V_{GE} = \pm 15\text{V}$			10	μs	
I_{sc}	short circuit current	$R_G = 1.3\ \Omega; \text{non-repetitive}$		2400		A	
R_{thJC}	thermal resistance junction to case				0.085	K/W	
R_{thCH}	thermal resistance case to heatsink				0.05	K/W	
Diode							
V_{RRM}	max. repetitive reverse voltage	$T_{VJ} = 25^{\circ}\text{C}$			650	V	
I_{F25}	forward current	$T_C = 25^{\circ}\text{C}$			490	A	
I_{F80}		$T_C = 80^{\circ}\text{C}$			340	A	
V_F	forward voltage	$I_F = 600\text{A}$			1.90	V	
				1.70		V	
I_R	reverse current	$V_R = V_{RRM}$			*	mA	
	* not applicable, see Ices value above				*	mA	
Q_{rr}	reverse recovery charge	$V_R = 300\text{V}$ $-di_F/dt = 0\text{A}/\mu\text{s}$ $I_F = 600\text{A}; V_{GE} = 0\text{V}$		tbd		μC	
I_{RM}	max. reverse recovery current		$T_{VJ} = 125^{\circ}\text{C}$	tbd		A	
t_{rr}	reverse recovery time		tbd		ns		
E_{rec}	reverse recovery energy		tbd		mJ		
R_{thJC}	thermal resistance junction to case				0.095	K/W	
R_{thCH}	thermal resistance case to heatsink				0.04	K/W	

Package SimBus F			Ratings			
Symbol	Definition	Conditions	min.	typ.	max.	Unit
I_{RMS}	RMS current	per terminal				A
T_{stg}	storage temperature		-40		125	°C
T_{VJ}	virtual junction temperature		-40		175	°C
Weight				350		g
M_D	mounting torque		3		6	Nm
M_T	terminal torque		3		6	Nm
$d_{Spp/App}$	creepage distance on surface striking distance through air	terminal to terminal	12.7			mm
$d_{Spb/Appb}$		terminal to backside	10.0			mm
V_{ISOL}	isolation voltage	t = 1 second t = 1 minute 50/60 Hz, RMS; $I_{ISOL} \leq 1$ mA	3000 2500			V V
$R_{pin-chip}$	resistance pin to chip	$V = V_{CEsat} + 2 \cdot R \cdot I_C$ resp. $V = V_F + 2 \cdot R \cdot I_F$		0.65		mΩ



Part number

- M = Module
- I = IGBT
- X = XPT IGBT
- A = Gen 1 / std
- 600 = Current Rating [A]
- CF = Common collector + free wheeling diodes
- 650 = Reverse Voltage [V]
- T = Thermistor \ Temperature sensor
- SF = SimBus F

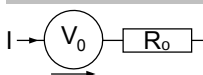
Ordering	Part Number	Marking on Product	Delivery Mode	Quantity	Code No.
Standard	MIXA600CF650TSF	MIXA600CF650TSF	Box		

Temperature Sensor NTC

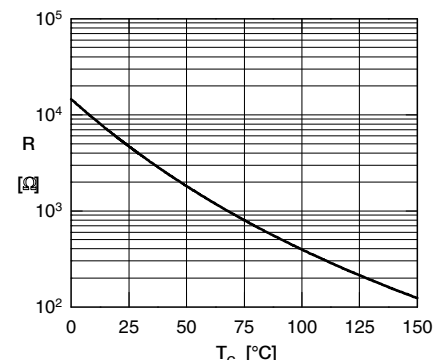
Symbol	Definition	Conditions	min.	typ.	max.	Unit
R_{25}	resistance	$T_{VJ} = 25^\circ$	4.75	5	5.25	kΩ
$B_{25/50}$	temperature coefficient			3375		K

Equivalent Circuits for Simulation

* on die level

 $T_{VJ} = 175^\circ\text{C}$


		IGBT	Diode	
$V_{0\ max}$	threshold voltage	1.1	1.21	V
$R_{0\ max}$	slope resistance *	1.8	1	mΩ



Typ. NTC resistance vs. temperature

Outlines SimBus F

