

MATERIALS AND FINISHES

SMA
 BODY, JAM NUT, CRIMP TUBE: BRASS
 PLATED GOLD

CENTER CONTACT: BRASS
 PLATED GOLD

LOCK WASHER: PHOSPHOR BRONZE
 PLATED GOLD

INSULATOR: TEFLON

GASKET: SILICONE RUBBER

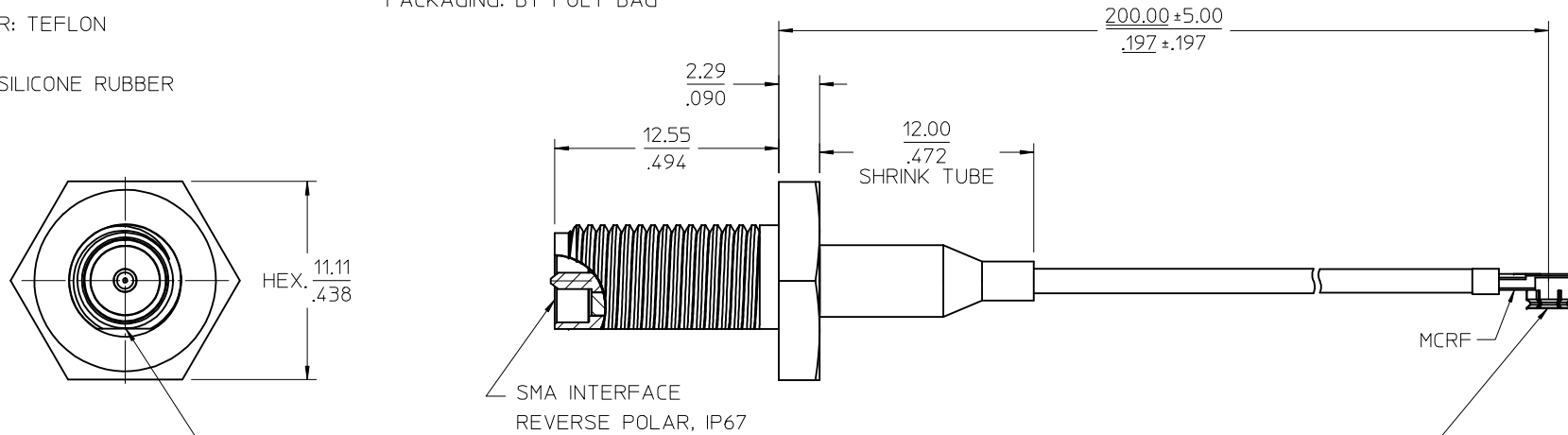
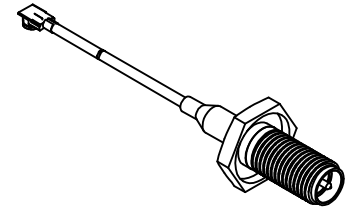
MCRF
 BODY, CENTER CONTACT: PHOSPHOR BRONZE
 PLATED GOLD

HOUSING: PBT

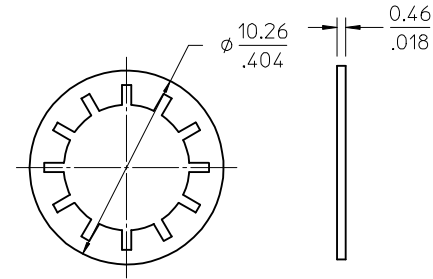
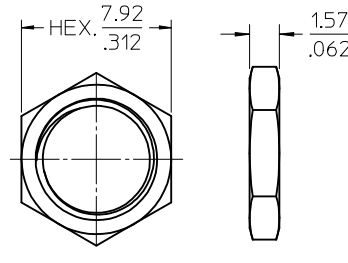
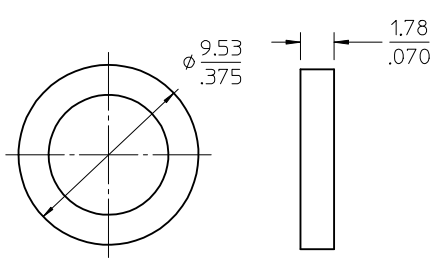
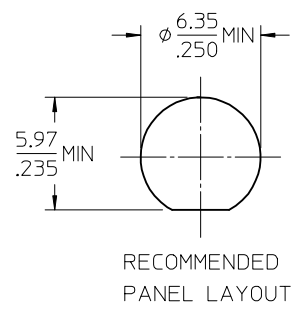
SHRINK TUBE: VERSAFIT OR EQUIVALENT

CABLE: 1.37MM OR EQUIVALENT

PACKAGING: BY POLY BAG



FLAT ON SMA TO BE ORIENTATED TO MCRF AS SHOWN



PART # 89762-9090

RTM PDR16052247 EC NO: URF2017-0001 DRWN: CWE102 2016/05/12 CHKD: APPR: YCHENG 2016/07/12 REV: A	QUALITY SYMBOLS ▽=0 ▽=0 ▽=0	GENERAL TOLERANCES (UNLESS SPECIFIED) mm INCH 4 PLACES ± --- ± --- 3 PLACES ± --- ± --- 2 PLACES ± --- ± --- 1 PLACE ± --- ± --- 0 PLACE ± --- ± --- ANGULAR ± 2 ° DRAFT WHERE APPLICABLE MUST REMAIN WITHIN DIMENSIONS	DIMENSION STYLE MM/IN DRAWN BY DATE CWE102 2016/05/12 CHECKED BY DATE KERRIE 2016/05/12 APPROVED BY DATE YCHENG 2016/07/12	SCALE DESIGN UNITS METRIC THIRD ANGLE PROJECTION	TITLE CA,SMA JACK RP BKHD IP67 TO MCRF WITH 1.37MM CA-SMA_J_RP/MCRF molex DOCUMENT NO. SD-89762-909 SHEET NO. 1 OF 1
	MATERIAL NO. 897629090	THIS DRAWING CONTAINS INFORMATION THAT IS PROPRIETARY TO MOLEX INCORPORATED AND SHOULD NOT BE USED WITHOUT WRITTEN PERMISSION			
	THIS DRAWING CONTAINS INFORMATION THAT IS PROPRIETARY TO MOLEX INCORPORATED AND SHOULD NOT BE USED WITHOUT WRITTEN PERMISSION				
	THIS DRAWING CONTAINS INFORMATION THAT IS PROPRIETARY TO MOLEX INCORPORATED AND SHOULD NOT BE USED WITHOUT WRITTEN PERMISSION				