


品名 : ACN-6525-P1-LC-S

1.Explanation of part number :

AC	N	6525	P1	LC	S
Product Type	Center Frequency/Band Code	Product Code (Unit: mm)	Design Revision Code	Antenna Type	Special Code
Chip Antenna	A: 2.4GHz E: Cellular G:868MHz H:915MHz L:5GHz M3:2G+5GHz N:NFC	Per 2 digits of length, width e.g.: 6525 6.5*2.5 (Length * Width)	P1:Rev.1	CC: Coupling Ceramic GF: On Ground, FR4 LC: Loop ceramic MC: Monopole Ceramic MF: Monopole FR4 PF: PIFA FR4	S: RoHS Compliant

2.Electrical Specification :

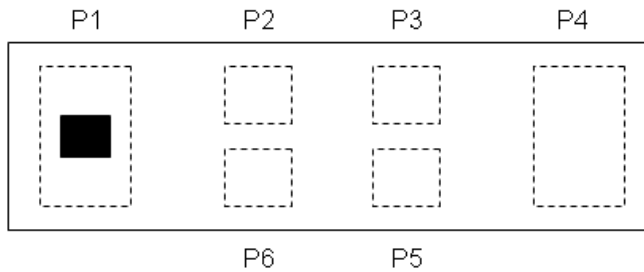
	Specification
L (@1MHz)	1055 ± 40 nH

UNLESS OTHER SPECIFIED TOLERANCES ON : X=N/A X.X=N/A X.XX=N/A ANGLES=N/A HOLEDIA=N/A			INPAQ TECHNOLOGY CO., LTD.
SCALE : N/A UNIT : mm	THIS DRAWINGS AND SPECIFICATIONS ARE THE PROPERTY OF INPAQ TECHNOLOGY CO.,LTD.AND SHALL NOT BE REPRODUCED OR USED AS THE BASIS FOR THE MANUFACTURE OR SALE OF APPARATUS OR DEVICES WITHOUT PERMISSION		
DRAWN BY : 詹惠雯	CHECKED BY : 詹惠雯		
DESIGNED BY : 黃瑞郎	APPROVED BY : 陳振榮		
TITLE : ACN-6525-P1-LC-S		DOCUMENT NO.	ENS070001660-000824000292
			SPEC REV. A0

3. Antenna Drawing :

CONSTRUCTION

Top view



PIN	Connection
1	IN
2	N/C
3	N/C
4	OUT
5	N/C
6	N/C

DIMENSIONS

Figure	Symbol	Dimension (mm)
<p>Top view</p> <p>Side view</p> <p>Bottom view</p>	L	6.3 ± 0.20
	W	2.4 ± 0.20
	T	0.38 ± 0.05
	A	2.0 ± 0.20
	B	1.03 ± 0.10
	C	0.8 ± 0.10
	D	0.9 ± 0.10
	E	0.12 ± 0.05
	F	0.8 ± 0.10
	G	0.8 ± 0.10
	H	0.8 ± 0.10
I	0.12 ± 0.05	

UNLESS OTHER SPECIFIED TOLERANCES ON :
 X=N/A X.X=N/A X.XX=N/A
 ANGLES=N/A HOLEDIA=N/A



INPAQ TECHNOLOGY CO., LTD.

SCALE : N/A

UNIT : mm

DRAWN BY : 詹惠雯

CHECKED BY : 詹惠雯

DESIGNED BY : 黃瑞郎

APPROVED BY : 陳振榮

THIS DRAWINGS AND SPECIFICATIONS ARE THE PROPERTY OF INPAQ TECHNOLOGY CO.,LTD.AND SHALL NOT BE REPRODUCED OR USED AS THE BASIS FOR THE MANUFACTURE OR SALE OF APPARATUS OR DEVICES WITHOUT PERMISSION

TITLE : ACN-6525-P1-LC-S

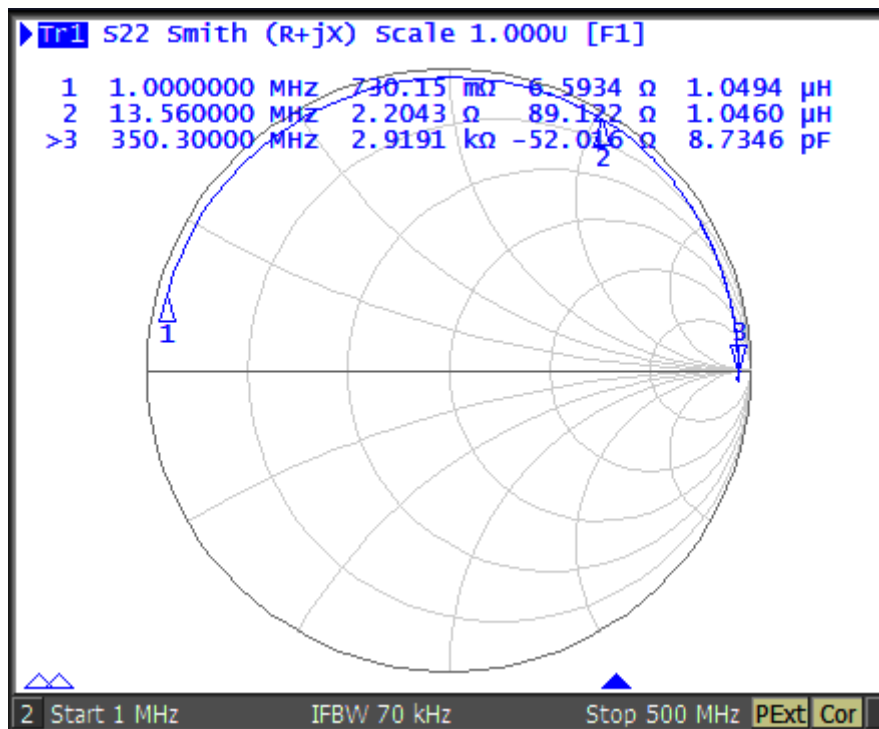
DOCUMENT NO.


ENS070001660-000824000292

SPEC REV. A0

4. Performance Report :

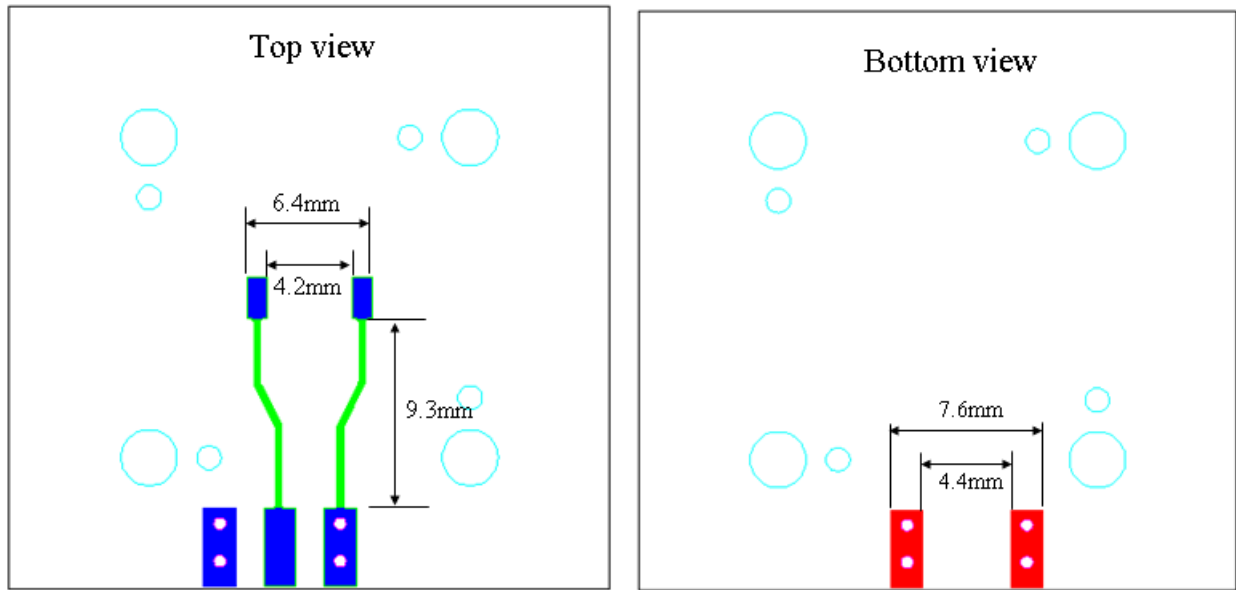
Typical Electrical Chart



UNLESS OTHER SPECIFIED TOLERANCES ON : X=N/A X.X=N/A X.XX=N/A ANGLES=N/A HOLEDIA=N/A		 INPAQ TECHNOLOGY CO., LTD.	THIS DRAWINGS AND SPECIFICATIONS ARE THE PROPERTY OF INPAQ TECHNOLOGY CO.,LTD.AND SHALL NOT BE REPRODUCED OR USED AS THE BASIS FOR THE MANUFACTURE OR SALE OF APPARATUS OR DEVICES WITHOUT PERMISSION
SCALE : N/A	UNIT : mm		
DRAWN BY : 詹惠雯	CHECKED BY : 詹惠雯		
DESIGNED BY : 黃瑞郎	APPROVED BY : 陳振榮		
TITLE : ACN-6525-P1-LC-S		DOCUMENT NO.	SPEC REV.
		ENS070001660-000824000292	A0

SOLDER LAND PATTERN (FR4 THICKNESS 0.8mm)

Figure



Line width to be designed to match 50 Ω characteristic impedance, depending on PCB material and thickness.

SOLDERING CONDITION

Typical examples of soldering processes that provide reliable joints without any damage are given in Fig 1.

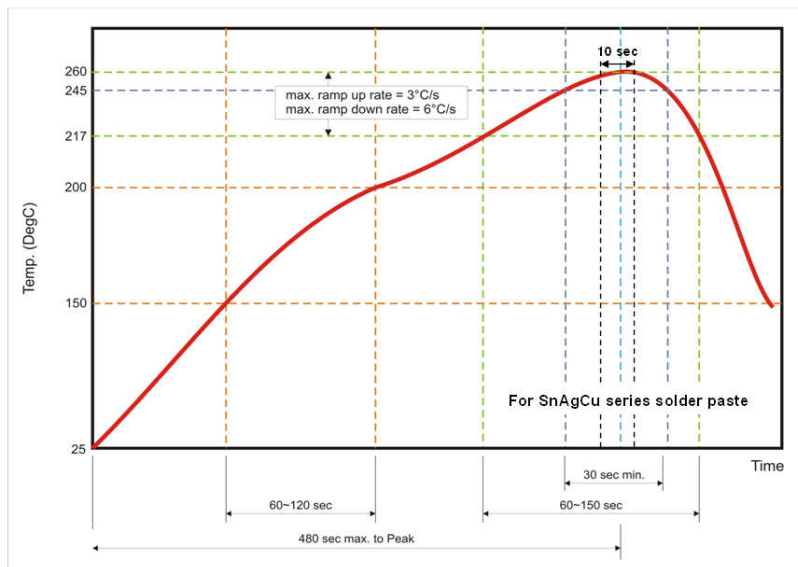



Fig 1. Infrared soldering profile

UNLESS OTHER SPECIFIED TOLERANCES ON :			INPAQ TECHNOLOGY CO., LTD.
X=N/A	X.X=N/A		
ANGLES=N/A		HOLEDIA=N/A	
SCALE : N/A	UNIT : mm	THIS DRAWINGS AND SPECIFICATIONS ARE THE PROPERTY OF INPAQ TECHNOLOGY CO.,LTD.AND SHALL NOT BE REPRODUCED OR USED AS THE BASIS FOR THE MANUFACTURE OR SALE OF APPARATUS OR DEVICES WITHOUT PERMISSION	
DRAWN BY : 詹惠雯	CHECKED BY : 詹惠雯		
DESIGNED BY : 黃瑞郎	APPROVED BY : 陳振榮		
TITLE : ACN-6525-P1-LC-S		DOCUMENT NO.	ENS070001660-000824000292
			SPEC REV. A0

5. RELIABILITY TEST

Test item	Test condition / Test method	Specification
Temperature cycle JIS C 0025	1. 30±3 minutes at -40°C±3°C, 2. 10~15 minutes at room temperature, 3. 30±3 minutes at +85°C±3°C, 4. 10~15 minutes at room temperature, Total 100 continuous cycles Measurement to be made after keeping at room temperature for 24±2 hrs	No mechanical damage. Inductance variation within 10%
High temperature JIS C 0021	*Temperature : 85°C±2°C *Test duration : 1000+24/-0 hours Measurement to be made after keeping at room temperature for 24±2 hrs	No mechanical damage. Inductance variation within 10%
Humidity (steady conditions)	*Humidity : 90% to 95% R.H. *Temperature : 40±2°C *Time : 1000+24/-0 hrs. Measurement to be made after keeping at room temperature for 24±2 hrs ※ 500hrs measuring the first data then 1000hrs data	No mechanical damage. Inductance variation within 10%
Low temperature JIS C 0020	*Temperature : -40°C±2°C *Test duration : 1000+24/-0 hours Measurement to be made after keeping at room temperature for 24±2 hrs	No mechanical damage. Inductance variation within 10%

UNLESS OTHER SPECIFIED TOLERANCES ON :
 X=N/A X.X=N/A X.XX=N/A
 ANGLES=N/A HOLEDIA=N/A



INPAQ TECHNOLOGY CO., LTD.

SCALE : N/A

UNIT : mm

DRAWN BY : 詹惠雯

CHECKED BY : 詹惠雯

DESIGNED BY : 黃瑞郎

APPROVED BY : 陳振榮

THIS DRAWINGS AND SPECIFICATIONS ARE THE PROPERTY OF INPAQ TECHNOLOGY CO.,LTD.AND SHALL NOT BE REPRODUCED OR USED AS THE BASIS FOR THE MANUFACTURE OR SALE OF APPARATUS OR DEVICES WITHOUT PERMISSION

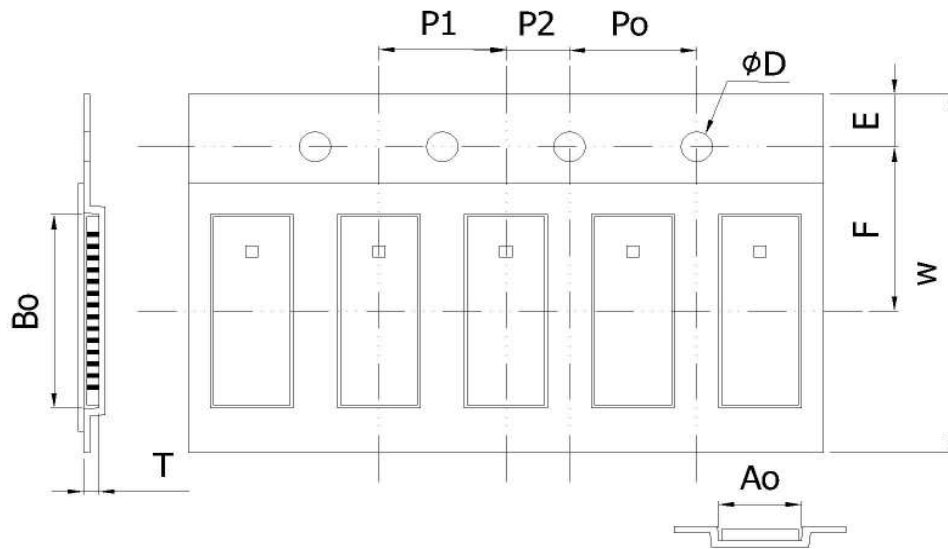
TITLE : ACN-6525-P1-LC-S

DOCUMENT NO.

ENS070001660-000824000292

SPEC REV.
A0

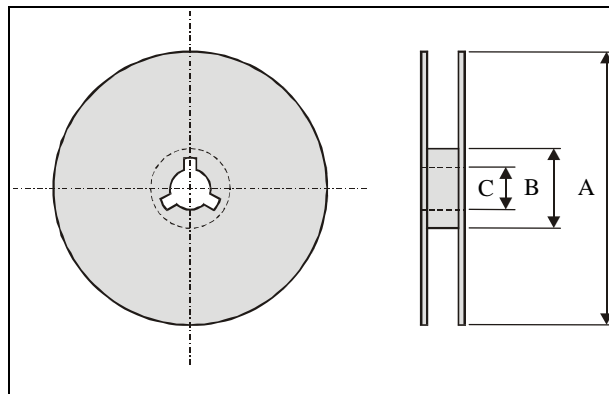
6. Package



Plastic Tape specifications (unit :mm)


Index	Ao	Bo	φD	T	W
Dimension (mm)	2.61 ± 0.10	6.48 ± 0.10	1.50 + 0.10	0.48 ± 0.10	12.00 ± 0.20
Index	E	F	Po	P1	P2
Dimension (mm)	1.75 ± 0.10	5.50 ± 0.05	4.00 ± 0.10	4.00 ± 0.10	2.00 ± 0.05

REEL DIMENSIONS



Index	A	B	C
Dimension (mm)	Φ178.0	Φ60.0	Φ13.0

Taping Quantity: 2000 pieces per 7" reel

UNLESS OTHER SPECIFIED TOLERANCES ON : X=N/A X.X=N/A X.XX=N/A ANGLES=N/A HOLEDIA=N/A		 INPAQ TECHNOLOGY CO., LTD.
SCALE : N/A	UNIT : mm	
DRAWN BY : 詹惠雯	CHECKED BY : 詹惠雯	THIS DRAWINGS AND SPECIFICATIONS ARE THE PROPERTY OF INPAQ TECHNOLOGY CO.,LTD.AND SHALL NOT BE REPRODUCED OR USED AS THE BASIS FOR THE MANUFACTURE OR SALE OF APPARATUS OR DEVICES WITHOUT PERMISSION
DESIGNED BY : 黃瑞郎	APPROVED BY : 陳振榮	
TITLE : ACN-6525-P1-LC-S		DOCUMENT NO. ENS070001660-000824000292
		SPEC REV. A0