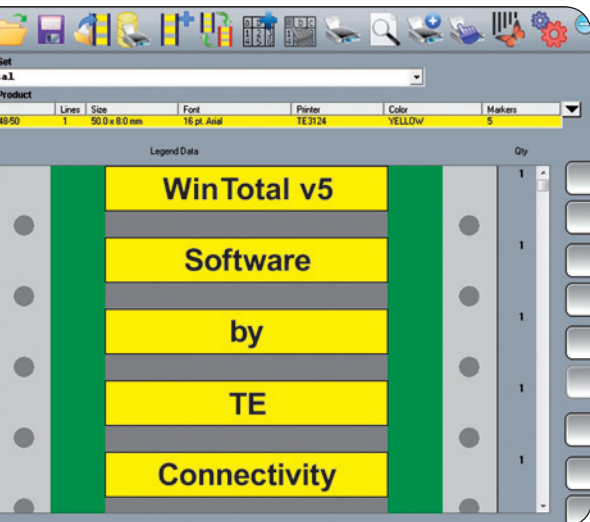


## Introducing WinTotal v5 Software

TE Connectivity launches a new version of the WinTotal software. The WinTotal software series supports high quality wire and harness identification and basic labeling printing applications. The WinTotal software works with all current TE Connectivity identification products and printers. It has a number of new features and benefits making it a more powerful and user-friendly identification and labeling software solution.





## KEY FEATURES

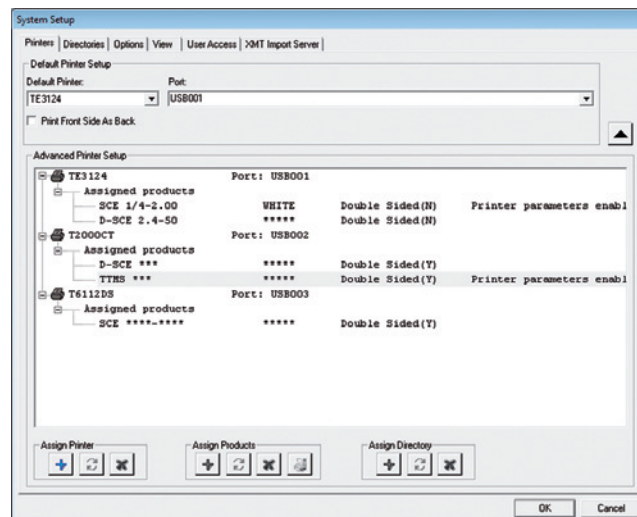
- Multilingual user interface: English, French, German, Spanish, Italian, Dutch and Norwegian
- Pre-loaded with TE Connectivity identification templates
- Graphical user interface with WYSIWYG (What You See Is What You Get) display
- Simplified operator interface with powerful functions
- Built-in printer drivers for TE Connectivity identification printers
- Multiple Application Port Printing (MAPP): Product assigned to specified printers for automatic batch printing
- Import or print directly from external data sources, e.g. txt, xls, Access databases
- Advanced template design allows creation of graphics, logos, bar codes, lines, rectangles and circles
- Support for Windows 2000, Windows XP, Windows Vista and Windows 7 operating systems (32bit and 64bit)

## BASIC FUNCTIONALITIES

- Toolbar design, 'Keypad' buttons, 'Zoom In/Out' functions
- 'Selected Product' list box
- Simplified user interface configurable for both basic and advanced users
- Single file data format: One file now replaces multiple files used in older versions (old structure still supported)
- 'System Setup' screen with simplified printer selection: 'Advanced Printer Setup' function shows all settings in one location for simplified use

| Name          | Lines | Size           | Font         | Printer | Color  | Markers |
|---------------|-------|----------------|--------------|---------|--------|---------|
| SCE 1/50-2.00 | 1     | 48.0 x 60.0 mm | 10 pt. Arial | TE3124  | RED    | 100     |
| SCE 1-2.00    | 1     | 48.0 x 40.0 mm | 10 pt. Arial | TE3124  | WHITE  | 100     |
| SCE 1.50-2.00 | 1     | 48.0 x 60.0 mm | 10 pt. Arial | TE3124  | WHITE  | 100     |
| SCE 1/2-2.00  | 1     | 48.0 x 20.0 mm | 10 pt. Arial | TE3124  | WHITE  | 100     |
| SCE 1/4-2.00  | 1     | 48.0 x 11.0 mm | 10 pt. Arial | TE3124  | YELLOW | 100     |
| SCE 1/4-2.00  | 1     | 48.0 x 11.0 mm | 10 pt. Arial | TE3124  | WHITE  | 100     |
| SCE 1/8-2.00  | 1     | 48.0 x 6.0 mm  | 10 pt. Arial | T6112DS | YELLOW | 100     |
| SCE 1/8-2.00  | 1     | 48.0 x 6.0 mm  | 10 pt. Arial | TE3124  | WHITE  | 100     |
| SCE 3/16-2.00 | 1     | 48.0 x 8.0 mm  | 10 pt. Arial | TE3124  | YELLOW | 100     |
| SCE 3/16-2.00 | 1     | 48.0 x 8.0 mm  | 10 pt. Arial | TE3124  | WHITE  | 100     |
| SCE 3/4-2.00  | 1     | 48.0 x 30.0 mm | 10 pt. Arial | TE3124  | WHITE  | 100     |
| SCE 3/8-2.00  | 1     | 48.0 x 15.0 mm | 10 pt. Arial | TE3124  | WHITE  | 100     |

'Selected Product' list box displays more information



Printer configuration screen using MAPP configuration

## DATA MANAGEMENT

- Import data from ASCII or XMT files or from a Windows database
- 'Database Printing' function for printing data without importing into WinTotal software
- 'Preview' option to review the import configuration without importing

## TEMPLATES

- 'Rotation' option when creating products
- File format supporting importing and exporting of 'User Defined Layouts'

Access and Windows are registered trademarks of Microsoft Corporation.

## SERIALIZATION (AUTO NUMBERING/COUNTERS)

- 'Auto Numbering Product' function allows product with serializations that update after printing

## PRINTING

- Printer parameters are selectable from the print screen such as 'Speed' and 'Density'
- 'Print Preview' option

## SUPPORTED PRINTERS

| Standard Printers         | Legacy Printers           |
|---------------------------|---------------------------|
| T2000CT-PRINTER           | CAB A4+300                |
| T208M-PRINTER             | EPSON LQ - DOT MATRIX     |
| T212M-PRINTER             | T308S-PRINTER             |
| T312S-PRINTER             | T312Z                     |
| T312M-PRINTER             | T408M                     |
| T6112DS-PRINTER           | T412S                     |
| TE3112-PRINTER            | T424S                     |
| TE3124-PRINTER            | T612M-DS-PRINTER          |
| LMS 9000 Laser Engraving  | ZEBRA 170XI               |
| ITS BTT-02 - Card Printer | WHEELWRITER - Daisy Wheel |

## ORDERING INFORMATION

| Order Description  | PCN                      |
|--------------------|--------------------------|
| WINTOTAL-5-DONGLE  | ED4097-000 (recommended) |
| WINTOTAL-5-LICENCE | ED4098-000               |

WINTOTAL-5-DONGLE is supplied with a USB key (dongle). This is the license. Once inserted, the program is fully functional. If not, the program will function in demo mode. Transferring the license between multiple computers or when upgrading computers only requires the key to be inserted.

WINTOTAL-5-LICENCE is supplied with a serial number which requires to be registered via the internet. This serial number can only be registered to one computer. This option is only recommended if a USB port is not available.

A WinTotal software **demo version can be downloaded** using the following link: <http://identification.tycoelectronics.com/03/software.asp>. A full list of features is accessible in the software's help file.

For full details of the software capabilities please refer to the technical datasheet **TTDS-001 V6**.

For **WinTotal v5 software**, TE Connectivity recommends the purchase of a dongle version. A one license version is also available.

EPSON is a trademark of SEIKO EPSON KABUSHIKI KAISHA. Zebra is a registered trademark of Zebra Technologies. Wheelwriter is a registered trademark of the International Business Machines Corporation (IBM).

## FOR MORE INFORMATION

[te.com/products/identification-labeling](http://te.com/products/identification-labeling)

For email, phone or live chat, go to: [te.com/help](http://te.com/help)

Part numbers in this brochure are RoHS Compliant\*, unless marked otherwise.

\*as defined [te.com/leadfree](http://te.com/leadfree)

### Product Information Centers

|                        |                   |
|------------------------|-------------------|
| Austria:               | +43 1 90560 1228  |
| Baltic Regions:        | +46 8 50 72 50 20 |
| Benelux:               | +31 73 6246 999   |
| Canada:                | +1 905 475 6222   |
| China:                 | +86 400 820 6015  |
| France:                | +33 1 34 20 86 86 |
| Germany:               | +49 6251-133 1999 |
| Italy:                 | +39 011-4012632   |
| Latin & South America: | +54 11 4733 2200  |
| Mexico:                | +52 55 1106 0800  |
| Nordic:                | +358 9 5123 4218  |
| Spain & Portugal:      | +34 93-2910366    |
| Switzerland:           | +41 71 447 04 47  |
| United Kingdom:        | +44 800 267666    |
| United States:         | +1 800 522 6752   |

## te.com

© 2011 Tyco Electronics Corporation. All Rights Reserved.

3-1773458-5 CIS DK 04/2011

WINTOTAL, TE Connectivity, TE connectivity (logo) and TE (logo) are trademarks of the TE Connectivity Ltd family of companies. Other logos, product and Company names mentioned herein may be trademarks of their respective owners.

While TE has made every reasonable effort to ensure the accuracy of the information in this catalog, TE does not guarantee that it is error-free, nor does TE make any other representation, warranty or guarantee that the information is accurate, correct, reliable or current. TE reserves the right to make any adjustments to the information contained herein at any time without notice. TE expressly disclaims all implied warranties regarding the information contained herein, including, but not limited to, any implied warranties of merchantability or fitness for a particular purpose. The dimensions in this catalog are for reference purposes only and are subject to change without notice. Specifications are subject to change without notice. Consult TE for the latest dimensions and design specifications.

