



Virtual Sample Kit



KOAXXA RF Interconnects

Virtual Sample Kit

With one click on the part number you can:

- View Product Details

With a second click on 'View Product Details' you can:

- View product drawing or related specifications
- View 3D pdf
- Request sample
- Check pricing & availability

www.KOAXXA.com

KOAXXA RF Interconnects Kit

Straight Cable Plug



Part Number	Terminates To
SMA-PS-1A-S	RG 402 Semi-Rigid, RG 402 Conformable
SMA-PS-1B-S	RD316, K02252D
SMA-PS-1C-S	RG 405 Semi-Rigid, RG 405 Conformable
SMA-PS-1D-S	RG 178, RG 196
SMA-PS-1F-S	RG 174, RG 188, RG 316
SMA-PS-1G-S	RG 58, RG 141, RG 142

Right Angle Cable Plug



Part Number	Terminates To
SMA-PR-1A-S	RG 402 Semi-Rigid, RG 402 Conformable
SMA-PR-1B-S	RD316, K02252D
SMA-PR-1C-S	RG 405 Semi-Rigid, RG 405 Conformable
SMA-PR-1D-S	RG 178, RG 196
SMA-PR-1F-S	RG 174, RG 188, RG 316
SMA-PR-1G-S	RG 58, RG 141, RG 142

Straight Cable Jack



Part Number	Terminates To
SMA-JS-1A-S	RG 402 Semi-Rigid, RG 402 Conformable
SMA-JS-1B-S	RD316, K02252D
SMA-JS-1C-S	RG 405 Semi-Rigid, RG 405 Conformable
SMA-JS-1D-S	RG 178, RG 196
SMA-JS-1F-S	RG 174, RG 188, RG 316
SMA-JS-1G-S	RG 58, RG 141, RG 142

Bulkhead Cable Jack



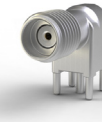
Part Number	Terminates To
SMA-JB-1A-S	RG 402 Semi-Rigid, RG 402 Conformable
SMA-JB-1B-S	RD316, K02252D
SMA-JB-1C-S	RG 405 Semi-Rigid, RG 405 Conformable
SMA-JB-1D-S	RG 178, RG 196
SMA-JB-1F-S	RG 174, RG 188, RG 316
SMA-JB-1G-S	RG 58, RG 141, RG 142

Vertical/Straight Board Mount Jack



Part Number	Terminates To
SMA-JS-P2-S	PCB thickness 3.175 mm (.125 in.) max.

Right Angle Board Mount Jack



Part Number	Terminates To
SMA-JR-P2-S	PCB thickness 3.175 mm (.125 in.) max.

Application Tooling Information