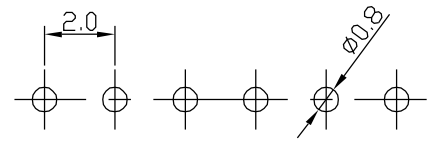
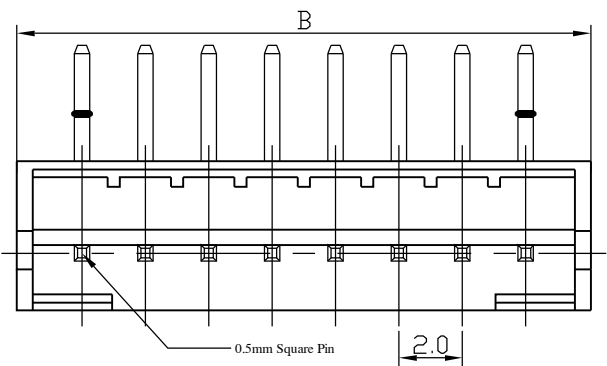


1 2 3 4 5 6 7 8

A



RECOMMENDED P.C. BOARD HOLE DIMM.

Specifications

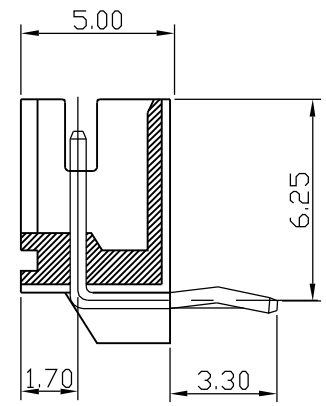
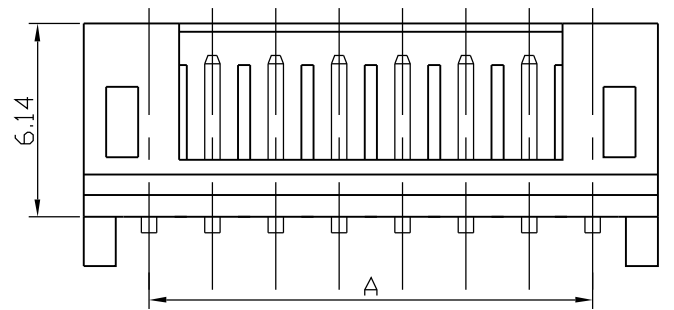
Electrical

- Voltage Rating: 100V(AC)
- Current Rating: 2A
- Contact Resistance: 20m Ω max.
- Dielectric Withstandeing Voltage: 800V AC/1min.
- Insulation Resistance: 1000M Ω min.

Material

- Circuits: 2~20
- Insulator: Nylon 66 UL 94V-0
- Color: White or Natural
- Contact: Brass 0.50mm(0.20 ") Square Wire Pins
- Plating: Tin or Gold Plated
- Temperature Range: -25 ° C~+85° C
- Applicable PC Board Thickness: 0.8 to 1.6mm

B



C

D

E

F

Poles	Dimension mm (inch.)	
	A	B
2	2.0(0.079)	6.04(0.237)
3	4.0(0.157)	8.04(0.316)
4	6.0(0.236)	10.04(0.395)
5	8.0(0.315)	12.04(0.473)
6	10.0(0.394)	14.06(0.473)
7	12.0(0.472)	16.06(0.631)
8	14.0(0.551)	18.08(0.711)
9	16.0(0.630)	20.08(0.790)
10	18.0(0.709)	22.10(0.870)
11	20.0(0.787)	24.10(0.949)
12	22.0(0.886)	26.12(1.027)
13	24.0(0.945)	28.12(1.106)
14	26.0(1.024)	30.14(1.203)
15	28.0(1.102)	32.14(1.283)
16	30.0(1.181)	34.14(1.363)
17	32.0(1.259)	36.16(1.424)
18	34.0(1.338)	38.16(1.502)
19	36.0(1.417)	40.16(1.581)
20	38.0(1.496)	42.16(1.660)

A

B

C

D

E

F

G

玄茂科技股份有限公司
HSUAN MAO TECHNOLOGY CO., LTD.

UNIT		SCALE	PART NAME	
MM		2:1	P:2.0MM PH WAFER 90°	
APPD.	CKD.	TOLERANCE	PART NO.	REV.
		± 0.5	W2103-XXPSRXBX	B

H

制表日 :2000/06/07
DRAWING. APPROVED
RANDY TINA

1 2 3 4 5 6 7 8