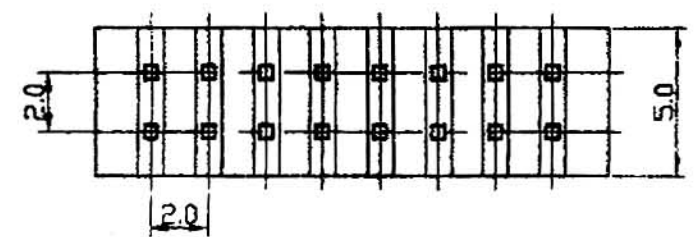
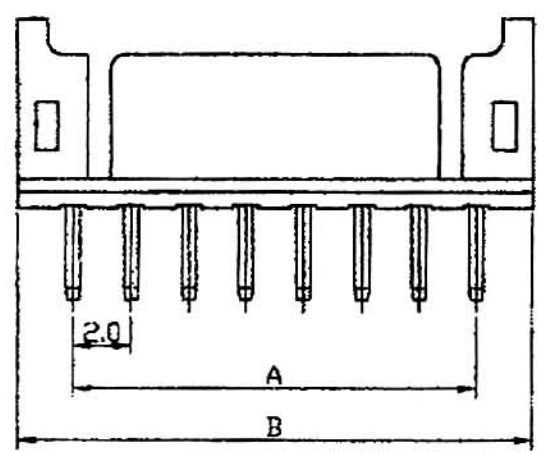
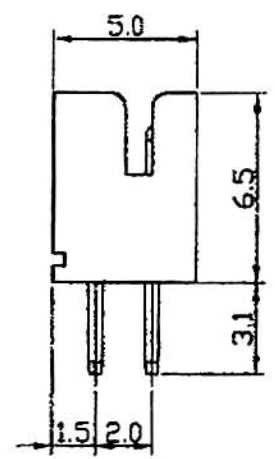
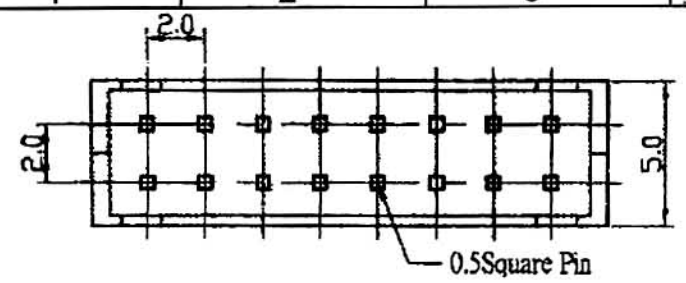
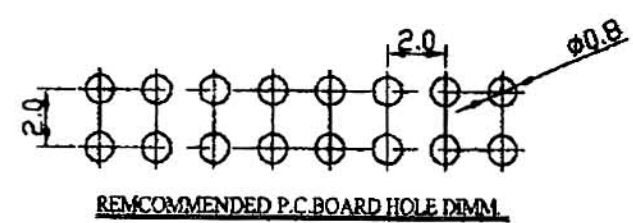


Specification

Current Rating: 3A AC DC
 Voltage Rating: 250V AC, DC
 Operating Temp: -25°C ~ +85°C
 Contact Resistance: 20mΩ Max
 Insulation Resistance: 1000MΩ Min
 Terminal Material: Brass/ Tin-plated/ Gold-plated
 Material: Nylon 66, UL 94V-0

Poles	Dimension mm (in.)		Note
	A	B	
6	4.0(0.157)	7.9(0.311)	
8	5.0(0.236)	9.9(0.390)	
10	8.0(0.315)	11.9(0.469)	
12	10.0(0.394)	13.9(0.547)	
14	12.0(0.472)	15.9(0.626)	
16	14.0(0.551)	17.9(0.705)	
18	16.0(0.630)	19.9(0.783)	
20	18.0(0.709)	21.9(0.862)	
22	20.0(0.787)	23.9(0.941)	
24	22.0(0.886)	25.9(1.020)	
26	24.0(0.945)	27.9(1.098)	
28	25.0(1.024)	29.9(1.177)	
30	28.0(1.102)	31.9(1.256)	
32	30.0(1.181)	33.9(1.335)	



玄茂科技股份有限公司
 HSUAN MAO TECHNOLOGY CO., LTD.

UNIT		SCALE	PART NAME	
MM		2:1	2.0mm Wafer Straight Dual Row / White Insulator	
APPD.	CKD.	TOLERANCE	PART NO.	REV.
		± 0.5	w2103-XXPDSXXW	A

制表日: 2002/12/04

DRAWING.	APPROVED
Jane	